

SPILSBY EXPLORER

SPRING 2024



Photograph by John Wood - Spilsby Resident.



SPILSBY TOWN COUNCIL

CONTENTS

MAYOR’S MESSAGE / MEETING DATES	3
ELDC CLLR ELLIE MARSH & LCC CLLR WENDY BOWKETT	5
SPILSBY LIBRARY	6
LINCOLNSHIRE FIRE & RESCUE	10
SPILSBY SCOUTS	11
ROTARY CLUB OF SPILSBY	12
OLD BOLINGBROKE AND HAREBY PARISH COUNCIL	14
SPILSBY AND HUNDLEBY WALKERS ARE WELCOME GROUP	15
SPILSBY RECOGNITION AWARD EVENT	16
SPILSBY RECREATION GROUND DEVELOPMENTS	18
FREQUENTLY ASKED QUESTIONS	21
SPILSBY TOWN CLERK’S UPDATE	22
SPILSBY SESSIONS HOUSE UPDATE	24
ST JAMES’ CHURCH / SPILSBY U3A	25
SPILSBY SURGERY	26
ROYAL BRITISH LEGION	28
SPILSBY CHRISTIAN FELLOWSHIP	29
USEFUL CONTACT NUMBERS	31

We would very much welcome any suggestions for future editions of the ‘Spilsby Explorer’. Please share any news article. Most importantly please just get in touch, we would really love to hear from you.

The next edition will be published in July 2024.

**If you would like to contribute please contact Spilsby Town Council.
Email: deputytownclerk@spilsbytowncouncil.gov.uk**

MAYOR'S MESSAGE

Welcome all to this edition of the Spilsby Explorer. We have had an eventful winter with many events in the town, which have been well supported and successful. Even the weather could not dampen the Christmas cheer.

The Council has been busy attending to its usual duties and engaging with and supporting our local groups. I would take the opportunity to bring attention to our first Recognition Day. This is aimed at highlighting the excellent work done by all those who give their time to make Spilsby the wonderful place it is. There is a detailed section later in the magazine.

On a personal note, this will be my last message as Mayor. I will be standing down in May. I would like to say what an honour and privilege it has been to serve. My heartfelt thanks to the Councillors, Clerks, groups and members of the public who have been exceptional in everything we have tried to do. If my successor enjoys the support I had, their role will be much easier.

Tom Kemp
Mayor of Spilsby



**SPILSBY
TOWN
COUNCIL**

DATES OF MEETINGS 2024-2025

All meeting to start at 6:00pm unless stated otherwise

FULL COUNCIL MEETINGS

Wednesday 27th March 2024

Wednesday 17th April 2024 - Annual Town Meeting

Wednesday 24th April 2024

Wednesday 22nd May 2024 - Annual Meeting of the Council

Wednesday 26th June 2024

Wednesday 24th July 2024

August Recess

Wednesday 25th September 2024

Wednesday 23rd October 2024

Wednesday 27th November 2024

December Recess

Wednesday 22nd January 2025

Wednesday 26th February 2025

Wednesday 26th March 2025

It's the start of something special.



It's that **Newton Fallowell** feeling.

We're an estate agency that puts people at the heart of property. Landlords, buyers, renters, vendors... they'll all say similar things. That we know the Midlands like no-one else. That we care more about service. And that while others go through the motions, we'll go the extra mile for every single customer.

Pop in, call **01790 755222**
or search **Newton Fallowell**



ELDC Councillor

Ellie Marsh

Hopefully, Spring has finally sprung, the daffodils are here and the gardens finally feel like they are removing their winter coat and enjoying the first rays of spring sunshine

With that in mind why not take the opportunity to go and enjoy a walk around town and see some of the things that are happening in Spilsby.



The planning application is in for the Pavilion Development which would see a great improvement in sporting facilities for our town. The planning application is also in for the new housing development on Halton Road, details of which can be found at <https://publicaccess.e-lindsey.gov.uk/online-application>.

In the town centre a new picture board has been installed outside “If Only” highlighting some of the lovely areas in town. A bench has been installed in the area between the surgery and Old School Mews highlighting the work done by BroPro UK, it’s a lovely place to sit and enjoy the sunshine.

The Councillor Grant scheme has proved very popular throughout the year, most recently I have awarded money to Spilsby Christian Fellowship for new signage to improve visibility for the groups and services that they offer. I have also awarded money to Spilsby New Life Centre to help their Community Co-ordinators to keep warm by purchasing warm jackets for when they are out and about engaging with members of the community. If you are part of a community group and would like to be considered for a grant please get in touch, Ellie.marsh@e-lindsey.gov.uk

Finally, I welcome anyone from Spilsby to get in touch if they feel there is an issue that I can help with, whether it be East Lindsey District Council related or not I will endeavour to do my best to help.

LINCOLNSHIRE COUNTY COUNCILLOR WENDY BOWKETT

Please get in touch with any issues you may have with Lincolnshire County Council

Cllr Wendy Bowkett

Email cllrw.bowkett@lincolnshire.gov.uk

Phone 07917494478

Executive Member for Adult Care and Public Health
Lincolnshire County Council
Wainfleet and Spilsby Ward

SPILSBY LIBRARY

GENERAL INFORMATION AND SERVICES AVAILABLE

The library is located in the Lincolnshire Co-op food store on Post Office Lane. It is run by volunteers supported by the Lincolnshire Co-op and Lincolnshire County Council. The library is open Monday – Friday between 9am and 5pm, and on Saturdays, 9am -1pm. Most of the time there is a volunteer there to help you, but if not, you can still borrow and return books (using the self-issue machine) and use one of the two computers (you will need to have a library card to do this).

If you are not a member of the library you can join by visiting the library when there is a volunteer there to give you a card. Anyone living, working, or studying in Lincolnshire is welcome to join. Membership is free and also enables access to online resources. Register from home at <https://prism.librarymanagementcloud.co.uk/lincolnshire/join> and then pop into the library to pick up a card.

Online you can reserve books, but if you prefer, you can do this in the library with a volunteer. See the poster on the door for times when a volunteer is usually available. There's also a returns box in the food store so you can return books outside opening hours.

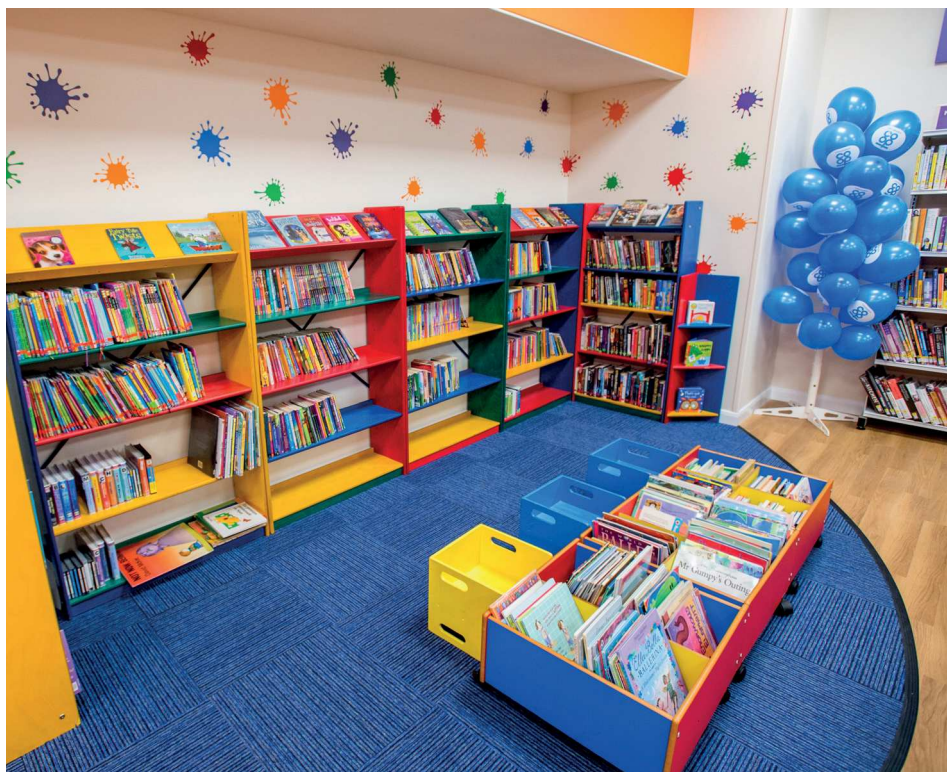
WHAT ELSE CAN YOU DO AT THE LIBRARY?

As well as books and audio books, you'll find a range of information about the local area and what's on in and around Spilsby. There is an extensive range of local and family history material - some of which you can borrow: some is only available to view in the library. Much of this material is unique to Spilsby library, so if you're interested in the local area, or tracing your family history, visit when a volunteer is present and you can be given access to the catalogues and the material.

There is section of children's books - the library is open after school, so why not bring your children in after school to choose books? In the summer we take part in the Summer Reading Challenge, designed to help children continue to read during the summer holidays.

When a volunteer is present, you can print from the computer or ask for photocopying (charges apply).

In March 2024 there will be a book sale with a range of books at very reasonable prices - all proceeds go the Co-op's chosen charity - this time it will be Breakfast Clubs and Holiday Activities and Food.



HAVE YOU THOUGHT OF VOLUNTEERING?

If you can spare a few hours a week, why not volunteer at Spilsby Library and join our friendly team of volunteers? You will need to be able to use a computer at a basic level, but full training is given to enable you to fulfil the role of a volunteer. Application forms are available in the library where you can talk to a volunteer about what being a volunteer involves. If you give the volunteer a contact number, the volunteer coordinator will contact you.

**We look forward to welcoming you
at your library in Spilsby.**



SPILSBY Motor Spares

Reynard St, Spilsby, PE23 5JB

01790 754699



Our friendly team are
looking forward to
helping you with all
your motoring needs

Opening Times

Mon - Fri

8:30am- 5:30pm

- Car Batteries
- Brakes
- Suspension Parts
- Bulbs
- Number Plates
- Wiper Blades
- Oils
- Car Valeting Products
- Tools
- Plus much more!



Your One - Stop Local Motor Spares Shop

Pop in and see us soon!

Classic Garden Services

SERVING SPILSBY AND BEYOND

*grass cutting, general tidying, pruning,
small tree lopping, hedge trimming, major cutting back
and clearance of overgrown areas*

Call Terry: 07368 538099

www.classicgardenservices

FIND US ON FACEBOOK

Tongs of Spilsby
Hardware & Cookshop

Hardware
DIY – Cookshop

1 HIGH STREET • SPILSBY • LINCOLNSHIRE • PE23 5JL

Tel: 01790 752548

HOW IS THE TOWN'S FIRE STATION AND CREW PERFORMING?

The recent named storms have brought a lot of wind and rain to the county of Lincolnshire. Fortunately, Spilsby has fared much better than other towns and villages around us, but that doesn't mean that your Fire Crew hasn't been busy from September to January. They have responded to many agricultural premises fires and during Storm Babet attended 6 separate flooding incidents.

If you feel you could be a part of the crew, why not pop down to the station during their drill night on a Thursday evening from 7pm.

So how many incidents has the crew attended between September 2023 and January 2024?

They responded to the following number of call outs

September – 16 calls

October – 28 calls

November – 21 calls

December – 15 calls

January – 14 calls

Important Fire Safety considerations as we enter the new year.

Do you know a Sherman? If you know anyone in the following groups, please encourage them to refer into Lincolnshire Fire & Rescue for a free Safe & Well check by calling the number below:

Smoker, Hoarder, Elderly, Reduced mobility, Mental health issues, Alcohol or drug dependant or needing care or support.

Product recall information

The following website will take you to the government product recalls. Particular products to be aware of are Satsuma Plug & Go Disco Bulb, which can give you an electric shock. Also, the Blendjet 2 Portable Blender, which has a fire risk. If you have these or any of the products on the list, please do not use them and return them to the place of purchase.

Product Recalls and Alerts - GOV.UK (www.gov.uk)



If you have any fire safety concerns in your home please contact the team at
Grantham Fire Station on 01476 565441

If you want to join the crew at Spilsby please ring the recruitment line on 0800 3580 204

You can follow Spilsby Fire Station and the crew on Facebook or Twitter



www.facebook.com/spilsbyfire



[@spilsbyfire](https://twitter.com/spilsbyfire)



Scouts 2nd Spilsby

Scouting for girls and boys age
4yrs-14yrs

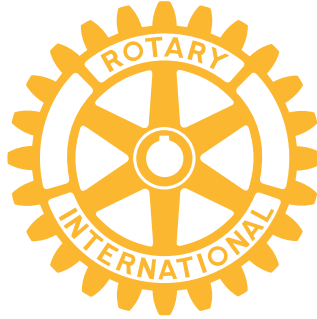
Find us on Facebook or email
gsl@2ndspilsby.org.uk

for details on how to join

**Camping, canoeing, kayaking, archery, tomahawk
throwing, campfires, team building, friendship,
challenges, new experiences, skills for life
and much more!**

**This is what we can offer our youth members on a
regular basis here at 2nd Spilsby Scout Group.**





ROTARY CLUB OF SPILSBY

Spilsby Rotary bounced back from the disappointment of a rained-off Bonfire Night in November with a blockbuster evening celebrating the music of Swedish band Abba in March.

The loss of Bonfire Night was a serious blow to Spilsby Rotary's activities raising cash for local and international charities, but heavy downpours in the weeks leading up to 5th November – including persistent

rain in the final week – made cancellation inevitable. This has traditionally been the club's main fundraising event.

The weather was a little kinder to local Rotarians on Cracker Day in December, if not to other participants. Bitter cold helped to drive children and parents into a bustling Franklin Hall to be greeted with a wide array of stalls, including Santa's grotto. All stallholders reported higher





takings than they expected. Spilsby Rotary has already booked the hall for the next Cracker Day on Saturday 7th December.

Then it was on to the packed annual carol service in St James's Church, with joyful singing by children from Toynton-All-Saints Primary School and Linkage College, Toynton.

Into the New Year, Burns Night, marking the birthday of the immortal Scottish poet Robbie Burns, fell on a Thursday, the meeting night for Spilsby Rotary at the Nelson Butt. Scottish Rotary member David Paul kept the Sassenachs in line, especially when he wielded a large kitchen knife to cut the haggis.

Nearer to home, club Secretary Richard Richmond challenged Rotarians' local knowledge with a Lincolnshire themed quiz.

Spilsby Rotary has visited Skegness twice, the first time for an organized tour of the Royal National Lifeboat Institute station to learn about the vital and sometimes, in the holiday season, hectic life that the crews lead as they keep the beaches

safe. President Neil Blanchard presented a cheque for £100 to help to keep the lifeboats afloat.

On the second occasion Rotarians tried their skills out on the 10-pin bowling alley at Skegness Pier. One member was bowling for the first time in 60 years. This was a regular event in the Spilsby Rotarian calendar before the pandemic and will be repeated in the club's 2024-25 agenda.

But the highlight of the current Rotary year has to be the Abba night at the Franklin Hall, suggested by and mainly organised by Rotarian Ian Evison with top tribute band Abba: Bjorn Again providing two 45-minute sets to send fans rocking in the aisles. The disco during the interval played 70s music and cocktails from the decade were served at the bar.

Anyone wanting to join Spilsby Rotary is welcome to attend on a couple of Thursday evenings to see if they enjoy the varied meetings. Contact President Neil Blanchard by emailing him at neil.mags.1991@btinternet.com or Secretary Richard Richmond at richardrichmond62@gmail.com.



Old Bolingbroke and Hareby enters 2024 with enthusiasm and hope!

We are so fortunate in Old Bolingbroke to have so many residents who work hard on a shared vision to safeguard its history and future. In this context we are incredibly lucky to have been awarded grants to enable us to develop several buildings in need of help.

The Church – The Friends of St Peter & St Paul and the PCC of Old Bolingbroke are delighted to have secured a National Heritage Lottery bid of £222,790, towards fully repairing the church's north roof, replace decaying stonework, woodwork and provide a new rainwater and drainage system, all desperately needed. John of Gaunt's historic church, open every day to visitors, has already survived 600 years and must be prepared for the next 600! We will be working in partnership with Heritage Lincolnshire who will be helping us to deliver a range of activities surrounding the grant such as joining us for a hard hats tour. Find us on Facebook. Thank you to all who buy Lottery Tickets!



The Gas House – Courtesy of the Rural Prosperity Fund a major capital works grant of £94,800 has been secured to renovate the Gas House, which sits on the edge of the Church grounds. This will enable us to safeguard the building's long-term future by converting it to a 'community reception' and permanent exhibition space.

The Butchers Shed – We have also been awarded a UK Shared Prosperity Fund grant of £59,340 for the shed's refurbishment. The plan is to restore the building and incorporate a three-phase power supply, an accessible toilet, a kitchen servery and a retractable awning. Sitting on the edge of the castle grounds this will have many potential uses to the benefit of both the castle and the village.

Ramsden Village Hall – The hall is already very well used by quite a number of groups, for Keep Fit, Dancing, Quilting, Yoga, a Lunch Club, and much more. The Parish Council has been awarded a Grassroots grant to help improve the facilities and create an even better space.

We all very much look forward to everyone seeing the fruits of these endeavours and to welcoming visitors to enjoy them too. Watch this space!



HM Government

Served by One Team
South & East Lincolnshire Councils Partnership



Spilsby and Hundleby Walkers are Welcome is a very local organisation that encourages both residents and visitors to enjoy walking in our beautiful countryside. We lead monthly walks in the local area, with distances ranging from 4 to 8 miles, going at a reasonable pace but with coffee and lunch breaks as appropriate.

There is no charge although donations are always welcome. Each walk is different and helps us with our aim of keeping the local Public Rights of Way footpaths usable and clear of obstructions. Our latest walks can be found on our website: www.spilsbyandhundlebywalkersarewelcome.com, or by contacting stef.round@gmail.com.

As well as our usual walks, we will also be leading two walks during the Lincolnshire Wolds Outdoor Festival, on 15th May 2024, when there will be a 4 mile walk at 10am on The Franklin Way, and a shorter walk round Spilsby at 10.30am. Both start at Spilsby Buttercross and will end with refreshments at Spilsby Methodist Church. In addition, our booklet of ten local walking routes, "Spilsby and Hundleby Walks", can be picked up from Spilsby Library or from the Franklin Hall. We hope to see you on one of our walks soon!

Wednesday 14 March 10.00am Parish Room, Hundleby 5 mile walk

Monday 15 April 10.00am Bag Enderby Church 8 mile walk

Spilsby Recognition Award Event

Spilsby Town Council are committed to promoting Spilsby and those who go above and beyond for the betterment of the town and its residents.

On Saturday 11 May the Town Council will be hosting a Recognition Award Event at Franklin Hall from 2pm, to celebrate those that make Spilsby the great Town that it is. There will be ten awards, eight will be mentioned below, to be given out and those recipients will have an opportunity to tell us how they have achieved what they have, and how it has improved the town or people's lives.

What we would like from you are nominations for the awards that are below. When choosing your nominations for one of the awards, please consider some of the following on top of the award description.

Has the recipient considered the improvement of facilities, environmental issues and sustainability, have they been able to bring groups/teams/organisations together for the betterment of the town, have they been able to raise funds or tap into funds to enhance their work or improve the life of others?

Please either email lee.marsh.stc@gmail.com with your nominations or complete the attached slip and post it to the Town Council Office at Franklin Hall.

AWARD CATEGORIES

Best decorated/maintained shop front Award

This award is to be received by the shop that has either consistently maintained a high level of window dressing throughout the year or has produced an attractive window display to celebrate key events nationally and locally.

Volunteer/voluntary group Award

This award is to be received by the group or individual that has done the most for the town, groups or organisations on a voluntary basis.

Impact on wellness/mental health Award

This award is to be received by the group or individual that has done the most for promoting wellness and/or mental health to a particular group or individuals in the town.

Sporting achievement Award

This award is to be received by the team, group or individual that has achieved beyond their aspirations and been inspirational to others.

Young adult engagement Award

This award is to be received by the group or individual that can demonstrate a positive outcome in their engagement with the young adults in the town.

Employer of the year Award

This award is to be received by the business or individual that employs at least one other person other than the owner and has either supported their staff to develop vocational or personal skills or supported them during a period of need.

People's choice Award

This is an open award to allow the public to choose a worthy recipient that doesn't fall within the categories listed.

Contribution to the community Award

This award is to be received by the group or individual that has contributed the most for the good of the community.

There will be 2 other awards, Mayor's Choice and Deputy Mayor's Choice, which will be open categories that will enable them to select a person/group/organisation that they feel need special recognition that haven't been covered in the above categories or haven't made the final choice.

Name of Award	Recipient
Best decorated/maintained shop front Award	
Volunteer/voluntary group Award	
Impact on wellness/mental health Award	
Sporting achievement Award	
Young adult engagement Award	
Employer of the year Award	
People's choice Award	
Contribution to the community Award	

Spilsby Recreation Ground Developments

Since the last Explorer, the Pavilion & Recreation Ground have submitted a Planning Application with ELDC for the development of the Pavilion. If you recall, the Trustees are completing the development in two phases, Phase One the Playzone & Skate Park and Phase Two the Pavilion and Car Park.

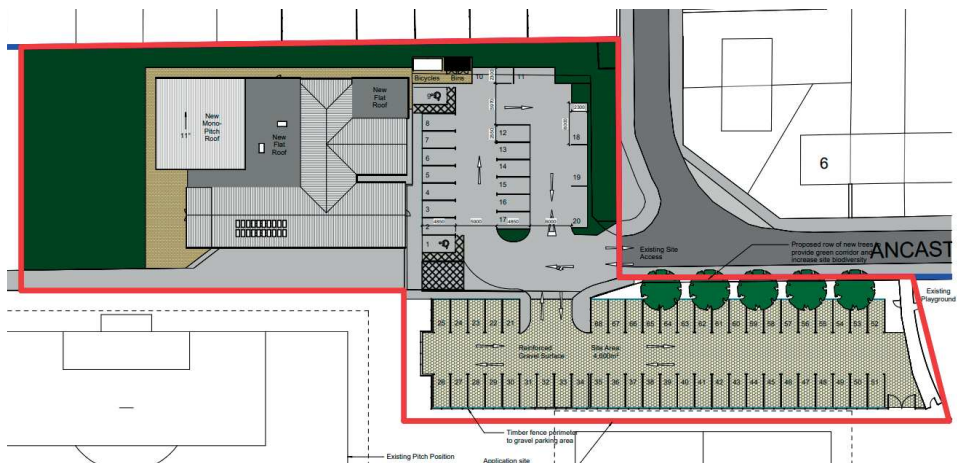
You can view the application online with reference S/165/00200/24

Please take a look. A lot of hard work, time and money has been spent ensuring we cover all bases for the future of this community asset. We all know that the current set up is outdated, and we need to develop to bring in line with Safeguarding, the increased demand, and new footballing requirements.

As the Spilsby Explorer is a Community Wide Publication, the Trustees would like to take this opportunity to highlight the important elements we have covered that affect you, the residents and users.

1. Better changing facilities for the footballing teams as we look to increase demand, introduce women's and disability football to the area. New changing rooms, showers and toilet cubicles.
2. A new Clubhouse/cafe/bar for local residents, footballers, spectators and pavilion users. Allowing more functions, more events and an increased revenue stream.
3. A new Site Office, for a Full Time Site Manager, available because of the increased revenue and needed to oversee the site, security, the facilities and any issues. Hopefully this will add a new layer of security and peace of mind for those near the Pavilion.
4. A new Hall. Used as an overspill for the current hall as it is used most evenings. Both halls will now join together to form a larger space for events like presentation evenings, Spilsby Show, kids parties and other events.





5. Increased Car Park - We know the parking is a nightmare, and we've addressed this. A new reinforced Gravel Car Park provides better parking and hopefully an end to parking over resident's driveways.
6. Drainage - New drainage will be introduced near the car park extension and fed into the local drain to hopefully eliminate any flooding coming from the field.
7. Safety gate for entrance to the Field from beside the Play Park.
8. A new Meeting Room for meetings, training and community development courses.
9. Solar Panels for better energy efficiency.
10. A new Players exit to the rear where it will loop round the building to the main pitch.

The Trustees want to explain everything, and hopefully we've done this here. It is an exciting time, a time to sort out issues that you've expressed in the community engagement. It is exciting to envisage the potential of the Pavilion in the years to come. The area is underfunded and the Town, Footballers, Residents and Visitors deserve a facility that delivers in all areas.

If there are any questions at all, you can email tony@spilsbyrecreationground.co.uk or WhatsApp 07887930132 and we'll try and get back to you as soon as we can. Please understand the Trustees are all volunteers, and sometimes we can't reply straightaway, but we'll try our very best.

Please support our development here with positive comments. As always, the Trustees know the problems. Problems are seen in every Town, but we are trying our hardest to give something of substance to the community to make it a better place for all that visit.

Thank you on behalf of the Trustees.



UNIT 3, THE FRANKLIN CENTRE
21 HIGH STREET
SPILSBY
PE23 5JH
07950214860
AMYLAMBLEY@GOOGLEMAIL.COM



AMY LAMBLEY SOFT TISSUE THERAPIST

ISRM BTEC LEVEL 5 PROFESSIONAL DIPLOMA IN SOFT TISSUE THERAPY,
RESTORE® SCAR THERAPY PRACTITIONER AND
ONCOLOGY MASSAGE SPECIALIST.



Soft tissue therapy encompasses the assessment, treatment and rehabilitation of soft tissues. This includes muscle, tendon and ligament pain and injury, that may come about as a result of the physical, emotional and mental demands of the modern lifestyle. Pain and movement dysfunction can have a significant impact on our daily lives and soft tissue therapy can be valuable in reducing those stressors and empowering the client to confidently manage their circumstances now and in the future. Soft tissue therapy includes educating the client to understand their pain thus helping to manage expectations for recovery and understand their treatment and rehabilitation plan. Manual therapy techniques including massage, soft tissue release and muscle energy techniques may be employed where appropriate to manage symptoms and the client will be guided through lifestyle adaptations and exercise to assist smooth recovery of injury or management of persistent pain conditions.



In 2023 Amy trained with Susan Findlay to be able to safely and effectively offer massage therapy to cancer patients. This includes clients in treatment, recovery and towards end of life. Oncology massage is a wonderful complementary therapy which aims to reduce the

symptomology of the disease and associated treatments including: pain, movement restriction, anxiety and depression, sleep quality and nausea amongst others.

In no way does oncology massage offer a treatment or cure for cancer. Amy works closely with the oncology team of each client to carefully integrate massage therapy alongside the existing medical treatments for best possible outcomes with the clients needs and welfare at the heart of all decision making.



As a Restore® Scar Therapy Practitioner Amy is able to offer gentle manual therapy techniques to assist individuals experiencing unfavourable symptoms associated with scarring such as pain, tightness, itching, numbness and movement restriction as well as helping clients to manage the early care of their scar to encourage optimal recovery. Amy compassionately assists clients who find physical and emotional connection to their scarring challenging and all clients are encouraged and guided through self care recommendations. Scar therapy can begin after 8wks as long as there are no signs of infection. Early intervention encourages the best possible outcome but it's never too late to treat scars of any age.

NOTE: Soft tissue therapy is not a replacement for medical advice and can not offer a diagnosis. Severe and/or unexplained pain should be reported in the first instance to a medical professional.



SPILSBY TOWN COUNCIL

Frequently asked questions to Spilsby Town Council

Q1. How do I apply for a grant/donation from Spilsby Town Council?

- A. Grant application forms are available on our website (spilsby.parish.lincolnshire.gov.uk)
Grants are available to any local group or organization in Spilsby.

Q2. How do I book the Mayor for my event?

- A. Mayor booking forms are available at <http://parishes.lincolnshire.gov.uk>
Or contact the Town Clerk, 01790 753189 Email: townclerk@spilsbytowncouncil.gov.uk

Q3. How do I get a Market Stall in Spilsby?

- A. This is the responsibility of East Lindsey District Council.
To apply for a stall please complete an application form available at
www.e-lindsey.gov.uk Booking a Market Stall or Email: markets@e-lindsey.gov.uk

Q4. My green bin wasn't emptied. Who do I contact?

- A. This is the responsibility of East Lindsey District Council.
Bin collection dates are listed on the website: www.e-lindsey.gov.uk
or telephone: 01507 601111

Q5. Who do I report a pothole to?

- A. This can be reported using www.fixmystreet.com

Q6. My Grass Verge needs cutting. Who do I contact?

- A. Lincolnshire County Council cut the grass verges three times a year.
Spilsby Town Council are subsidized by LCC to carry out additional cuts during the year.
Please contact the Town Clerk on 01790 753189 with details of any areas causing concern.

Q7. Who should I contact to discuss my housing application?

- A. This is the responsibility of East Lindsey District Council. Details can be found via the website. www.e-lindsey.gov.uk

Q8. Who do I contact to gain access to the CCTV footage in town?

- A. The Police are the only organization with access to the footage, following the reporting of an incident.

Q9. Who do I contact to report Dog Fouling?

- A. This is the responsibility of East Lindsey District Council. Details can be found via the website. www.e-lindsey.gov.uk

Q10. Who do I report vandalism in the Play Area (Boston Road Recreation ground) to?

- A. Contact the Town Clerk on 01790 753189



SPILSBY TOWN COUNCIL

TOWN CLERK'S UPDATE

Hello,

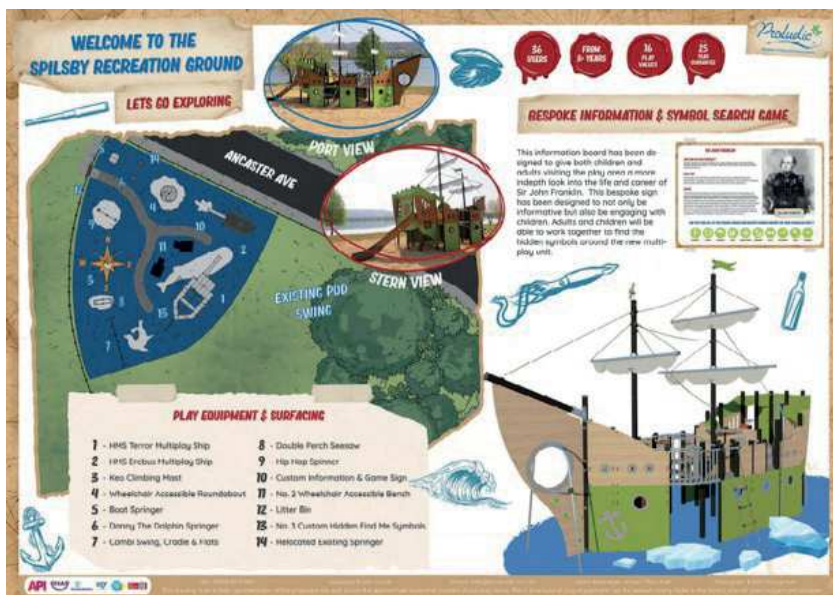
This year Spilsby Town Council celebrates 50 years of proudly serving the community. I hope that the Town Council can continue to have a positive impact and make a difference in the community.

PLAY AREA

The Town Council have allocated funds to install a new play area at the Recreation Ground on Ancaster Avenue and we have applied for some grant funding, however, due to budgetary restrictions and the size of the project, it may be installed in phases over a number of years.

We've received generous donations from Tong Engineering, GPC Industries and J&A International. We have also received grant funding from Platform Housing and the UK Shared Prosperity Fund via East Lindsey. Lincolnshire Co-Op have also been raising funds for the project. Many thanks to these businesses and organisations for their generosity, on behalf of the Town Council.

Please see the proposals, pictured, for the new play area. If you have any comments, or would like to make a suggestion on equipment for the play area, please do not hesitate to contact me, my details are shown below.



ALLOTMENT GARDENS

The Town Council manage 39 allotment gardens, on Hundleby Road. There are currently plots available, all varying in size, to residents within a 5-mile radius of Spilsby. There are many benefits to having an allotment, not just growing your own produce, it can improve mental health, improve physical fitness and connects you with nature. Please contact me if you are interested in any of the vacant allotments.

ROSE GARDEN

Following on from the installation of the new benches in the Rose Garden opposite Sainsbury's on Boston Road, plans are being made to improve this area further, working with ELDC, to install a mural and plant roses for a floral display. If you have any suggestions on how else this area could be improved, please do not hesitate to contact me. The Town Council have arranged to re-set 20 planters and 12 barrier baskets with summer bedding plants, adding some colour and interest to the town centre.

COMMUNITY SPEEDWATCH

Due to the poor weather the team has not been able to get out to conduct as many speed watch sessions as we would like. The speed watch team do a great job in contributing to keeping our roads safe. We are always looking for new volunteers to join the group. If you would like to participate, please contact me.

ORCHARD

A new bench kindly donated by Bro Pro UK has been installed in the Orchard, between Post Office Lane Car Park and Old School Mews. Information on the bench helps promote men's mental health. The wellbeing hub is located at the New Life Centre.

D-DAY COMMEMORATION

The Town Council will be looking to mark the 80th anniversary of the D-Day landings on 6th June by lighting the beacon. If you have any suggestions on how the Town Council could commemorate the day, please do not hesitate to contact me.

COUNCILLOR VACANCIES

There is currently a vacant seat on the Council. If you would like to join us and help make a difference in your community by becoming a Town Councillor, please do not hesitate to contact me for more information and an application form.

Best wishes,

Jack

Town Clerk

townclerk@spilsbytowncouncil.gov.uk
01790 753189

**CALLING ALL
COMMUNITY HEROES**



**SPILSBY
TOWN
COUNCIL**

NEEDS YOU!

**MAKE A CHANGE
BECOME A COUNCILLOR**

TO FIND OUT MORE, CONTACT:

townclerk@spilsbytowncouncil.gov.uk



SPILSBY SESSIONS HOUSE UPDATE

The team at Spilsby Sessions House are pleased to report that work on the project to renovate and transform the old court house building (also known as “the Theatre”) continues to progress. The emergency repairs work on site were completed satisfactorily last year, halting further deterioration; the building was cleared by volunteers; and a detailed survey was conducted.

It might appear that nothing now is happening on site; however there is much business being conducted behind the scenes. We are currently working with the architects on the final detailed design before submitting the planning application to ELDC. The main construction work on site is now expected to begin in early 2025, but the project is on schedule to be completed by the end of March 2026, as part of East Lindsey’s Levelling Up programme.

Meanwhile, the output of creative work from SessionsArts can be seen and enjoyed, such as Spilsby Light Night on 17th February. The Sessions Arts programme is funded by the UK Government through the UK Shared Prosperity Fund and by an Arts Council England National Lottery Project Grant. For up to date information on work and events from SessionsArts, please visit our website: www.thesessionshouse.org.uk, where further information on the whole project can also be found, including details of how you may be able to support Spilsby Sessions House into the future.

St James' Church, Spilsby



Here, at St James' Church, we are getting things ready for the Easter Celebrations. Churches Together in Spilsby will be holding a Good Friday Walk of Witness on 29 March 2024 beginning at 11.00am at the Franklin Statue and ending at the Roman Catholic Church for refreshments. On Easter Day, members of all the Churches in the Benefice will come together for a united service at 10am in St James' Church. Our Benefice stretches down to Stickney, up to Langton and Dalby, and across from Hagworthingham to Firsby & Candlesby. It is a big area and, together, we should really have a fantastic celebration which befits the season. Everyone is welcome to join us. We will continue our celebrations with Easter Cakes after the service.



This year, in addition to our Café Church which takes place once each month, we have also launched our Friendship Café at 3pm for about 90 minutes every Sunday afternoon in St James' Church. If you feel isolated, if you want some friendly company, if you have been bereaved, if you simply want to stop staring at the walls of your room, come and join us. You will get a warm welcome. Some people play games, others just sit and chat, but everyone leaves smiling.

And a call for all stitchers – In early September, as part of the Lincolnshire Wolds and Coast Churches Festival, we will be holding a patchwork and quilting exhibition in the Church. If you would like to see your work displayed over the weekend, please contact Rev. Fran at the Deanery Office: 01790 752526, or by email fran.jeffries@lincoln.anglican.org. We look forward to hearing from, and meeting, you!



Spilsby u3a is for those who are no longer in employment and are looking for activities that interest them and meeting like minded people. We are a very friendly group who meet at the Franklin Hall on the second Wednesday of the month from 2pm-4pm for our main meeting. This is comprised of an update of activities which are on offer for the following month, a refreshment break giving time to be able to sign up for anything one fancies and chat to others, and a speaker on a range of subjects. We have a large range of groups to join, some may be full at the moment as they meet in someone's home but there are plenty which have space and anyone can also start up a new group.

All this for £15 for the year. The only extra costs are venue hire for groups such as Art and entrance fees for visits plus getting to the visits. There is an excellent u3a magazine which you can subscribe to for £3.80 for 5 issues delivered to your address – fantastic value!

You are welcome to come for a taster session to our main meeting free of charge.

Have a look at our website www.spilsbyu3a.co.uk to learn more.



SPILSBY SURGERY

– CARE AS INDIVIDUAL AS YOU ARE –

Winter 2023-2024 has come and is, hopefully, not going to hang around allowing us all to look forward to spring and, of course, the planning for the summer holidays. Whilst we are on the subject, don't forget that if you are planning to travel abroad this year then you may need to be immunised depending on where you are travelling to. Please remember to plan this when you book your holiday as well as your travel insurance, giving us plenty of notice to be able to advise you and, if necessary, arrange for the vaccination.

Whilst we are on the subject, you will have read in the news that Measles is on the rise in the UK. Anyone (over 1 year old, with no upper age limit for catch up) can have a catch-up measles vaccine course, if you have not already had 2 doses of the MMR vaccine.

We are also able to offer Pneumococcal and Shingles Vaccinations when you reach the eligibility criteria laid down by NHS England.

This is:

Pneumococcal Vaccination – Anyone 65 years and over who has not already been vaccinated.

Shingles Vaccination – Anyone 65 years and over who has not already received a shingles vaccination. The age is reduced to 50 years if you are immunosuppressed/immunocompromised.

Easter and Your Medication

Whether you are a Pharmacy patient, dispensing patient or have your medication delivered to your door, now is the time to think about your medication supply over the Easter period. The surgery will close at 6.30pm on 28th March and reopen at 8am on 2nd April 2024. We would ask that you order your medication, regardless of who your provider is, by 4pm on the 18th March. You will receive regular reminders on your prescriptions and, for dispensing patients, notes with your medication.

New Services from the First Coastal Primary Care Network

We are very happy to be able to announce that the First Coastal Primary Care Network are able to provide services direct from the surgery, reducing both the waiting and travelling times within the County.

These services are:

First Contact Physiotherapy

Community Psychiatric Nurse

Health and Wellbeing Coach

Social Prescriber

Don't forget that you can book a Saturday GP appointment here at the surgery with a partner organisation.

Further information on how to access these services is available on our website or via Reception.

And finally, it is with Sadness that we announce the retirement of one of our Partners. Dr Stephen Savory has decided to hang up his stethoscope, pack-up his GP Bag and walk off into the sunset. Having qualified as a doctor in 1992, Stephen became a GP in 2006 moving to Spilsby 13 years ago. His skills as a Partner, GP Trainer and mentor will be missed by us all and we would like to wish him the very best in whatever venture he takes on next.



The Spilsby and District Branch Royal British Legion

After the years of turmoil caused by the Covid pandemic the Legion is back on an even keel. We have a new Chair in Suzanne Scott, a new Secretary and Treasurer to carry on the Branch's work in the district.

2023's Poppy Appeal was an amazing success, organised by Suzanne who is the District's Poppy Appeal Organiser. The total for the fortnight was £8517.84, which includes £4767.74 collected by Legion members at Sainsbury's. The seven primary schools took a total of £752.59 and the rest came from the various tins at surrounding villages including the Partney coffee morning, the Poppy Appeal Launch at the Aviation Centre and the year round collecting boxes from All Wrapped Up and Spilsby Antiques.

Individual members also collected on the Appeal's behalf to add to the grand total. Suzanne would like to express her heartfelt thanks to the people of Spilsby and district for their amazing generosity.

If you would like to join us in our work to support veterans and their families the cost of membership is a very reasonable £18 per year. Full details on how to join can be found on the Legion's website britishlegion.org.uk or phone 0800 307 7773 (free).

If you need further information you can also contact the Branch's Chair, Suzanne Scott, on:- suzanne.scott67@btinternet.com



Hello, from Spilsby Christian Fellowship

We continue to be busy helping local individuals and families in many ways, from offering food support, providing a “warm space” - hot drinks and a friendly welcome at Thursday’s Coffee n Chat, engaging with families through our “Baby & Toddler and Youth Groups” the provision of our “School Uniform Bank” and more..

Within the last couple of months we have been touched by the generosity of local people, helping in various ways to ensure we continue to support the community of Spilsby. A grant from Cllr Ellie Marsh has allowed us to purchase a banner and flags to help us to promote our groups. The local council has donated laptops and headphones which we hope to use within our youth group, and support online safety workshops, and the local Scout Group has helped with food bank donations.

After almost 17yrs running “Come & Play Tots”, we have been invited to partner with Lincolnshire “Family Hubs” who have given funding to purchase “sensory equipment” and “take home fun bags” which promote early language & literacy whilst encouraging parents/carers to spend quality time at home with their little ones. This partnership has also funded group leaders attendance at “Make it REAL” (early-years) and “Mellow Bumps” (antenatal) training programmes. Over recent years, the demise of FREE antenatal courses has meant parents-to-be often feel unprepared for parenthood, and the changes it brings. Wanting to try and bridge this gap and offer some “face to face” support, I have written a very practical “parents to be course” which I hope to deliver as well as “mellow bumps” in the next few months. As an add-on we are also hoping to attract some funding to enable us to start a “Breast Pump Hire Service”

Easter time is always important at the Fellowship. As Christians, we believe the Crucifixion and Resurrection of Jesus signified something so vital, a love beyond measure, and a forgiveness for the wrong



things we do, simply - Jesus stretching out his arms – just as a loving parent does to his child to show us how much he loved us – and to say that he wants to be included in our lives. Easter is celebrated in the Spring time, a time where we traditionally think of “NEW LIFE” of chicks breaking out of eggs, of bulbs budding, of lambs frolicking, of caterpillars changing to butterflies and tadpoles to frogs, the sun hopefully shining and time to look forward to brighter days ahead and fun times outdoors with family.

And Easter for us brings our **FREE “Easter Family Trail” on Easter Saturday 29th March** - a fun trail around Spilsby, with clues & questions on the way, giving a background to the Easter Story, and a FREE Goody bag to every child who takes part (donated by a local fund-raising initiative – Clare O & Vikki B -Thank you). We encourage early booking to ensure you get a place for this popular event.

To find out more, to volunteer, to book for the “Easter Trail”, please pop in, or find us on facebook Spilsby Christian Fellowship, email spilsbychristianfellowship@live.co.uk or call 01790 752457





**SPILSBY
TOWN
COUNCIL**

Advertise in the Spilsby Explorer Magazine

GET YOUR BUSINESS NOTICED

This is a great opportunity to advertise and promote your business in the local community by advertising in the Spilsby Explorer magazine, issued by Spilsby Town Council.

1500 copies are delivered to every household and businesses in Spilsby.

£45.00 for a full page per issue

£25.00 for half page per issue

£15.00 per quarter page per issue

Discounts available for advertising for a full year.

**To request a space in future issues please contact:
townclerk@spilsbytowncouncil.gov.uk
01790 753189**

Useful Contact Numbers

Emergency Services

Emergency	999
Police non-emergency	101
Spilsby Police Station	01790 752222
NHS Urgent Care	111

Health

Spilsby Surgery	01790 728111
Spilsby Pharmacy	01790 752246
Spilsby Dental Surgery	01790 753243
Pilgrim Hospital	01205 364801
Skegness Hospital	01754 762401

Local Authority

Spilsby Town Council	01790 753189
East Lindsey District Council	01507 601111
District Councillor	01790 763575
Lincolnshire County Council	01522 552222
County Councillor	01754 880388
MP Louth and Horncastle	01507 527017

Education

King Edward VI Academy	01790 753260
Woodlands Academy	01790 753902
Spilsby Primary Academy	01790 752503
Eresby Special School	01790 752441
Halton Holgate CofE Primary School	01790 752575
Partney CofE Primary School	01790 753319
Great Steeping Primary School	01754 830251
Toynnton All Saints Primary School	01790 752242
Spilsby Playgroup	07731 444986
Spilsby Children's Centre	01790 753451
Buttons Daycare Nursery	01790 755647
Buttons Kindergarten	01790 755202

Housing and Utilities

Lincs Rural Housing	01790 754219
Platform Housing Group (Waterloo)	0333 2007304
Anglian Water (Reporting Leak)	0800 771881
Flooding - to report flooding	01522 782082
Gas - National Grid	0800 111 999

Community

Franklin Hall	01790 752913
Recreation Ground (Pavilion)	01790 752573
Eresby Hall Care Home	01790 752495

Miscellaneous

Citizens Advice	0345 404 0506
Registration of Births, Deaths, Marriages & Civil Partnerships	01522 782244
Call Connect	0345 234 3344
Community Library	01522 782010
Household Waste Recycling Centres	01522 782070



FRANKLIN HALL - SPILSBY

A COMMUNITY HALL (REGISTERED CHARITY), THE PERFECT PLACE TO HOST SOCIAL AND BUSINESS EVENTS IN THE HEART OF SPILSBY

MAIN HALL

FOR LARGER FUNCTIONS AND ACTIVITIES UP TO 300 PEOPLE.
IDEAL FOR COMMUNITY, CHARITY AND COMMERCIAL EVENTS, CLUBS, CLASSES, SPORTS, WEDDING RECEPTIONS AND PARTIES ETC LARGER MEETINGS, PULL DOWN SCREEN, STAGE AND MICROPHONES AVAILABLE

CONFERENCE ROOM

OFFERS A MEETING ROOM/SMALLER FUNCTION ROOM FOR UP TO 50 PEOPLE.
PULL DOWN SCREEN AND FREE WIFI OFFERING A FRIENDLY AND PROFESSIONAL ENVIRONMENT.

KITCHEN/BAR AND LOUNGE

IDEAL SOCIABLE SPACE TO LINK TO THE ABOVE ROOMS AND ALSO IDEAL FOR SMALLER DINING EVENTS (E.G. COFFEE MORNINGS, LUNCH GROUPS).

Hall Manager's Office generally open Tuesdays 11.15am to 2.15pm
and Thursdays 9.30 to 12.30.

Tel 01790 752913

Email: spilsbyfranklinhall@btconnect.com

Photos and online events diary are available by visiting: spilsby.info/franklinhall