

SPILSBY EXPLORER

SUMMER 2024



Photograph by John Wood – Spilsby Resident.



SPILSBY TOWN COUNCIL

CONTENTS

MAYOR’S MESSAGE / TOWN COUNCIL MEETING DATES 2024/ 2025	3
ELDC CLLR ELLIE MARSH / LCC CLLR WENDY BOWKETT	5
SPILSBY U3A / SPILSBY TOWN TRAIL	7
SPILSBY RECREATION GROUND	10
ST BARNABAS ARTICLE	14
SPILSBY TOWN COUNCIL	16
SPILSBY LIBRARY	18
SPILSBY TWINNING ASSOCIATION	20
SPILSBY SESSIONS HOUSE	22
SPILSBY ROTARY	24
FREQUENTLY ASKED QUESTIONS	27
SPILSBY CHRISTIAN FELLOWSHIP	28
FIRE SERVICE	29
ROYAL BRITISH LEGION	30
SPILSBY SCOUTS	31
ST JAMES’ CHURCH	32
HOMEFURYOU	32
OLD BOLINGBROKE PARISH COUNCIL	33
SPILSBY TOWN COUNCIL RECOGNITION AWARDS EVENT	34

We would very much welcome any suggestions for future editions of the ‘Spilsby Explorer’. Please share any news article. Most importantly please just get in touch, we would really love to hear from you.

The next edition will be published in November 2024.

**If you would like to contribute please contact Spilsby Town Council.
Email: deputytownclerk@spilsbytowncouncil.gov.uk**

MAYOR'S MESSAGE

My name is Liz Day, and I have recently been elected Mayor of Spilsby. I will undertake to serve the people of Spilsby to the best of my ability.

Prior to my election as Mayor, I was Deputy Mayor. My husband and I took on a number of duties to aid the previous Mayor. We attended the Civic Services for Mablethorpe, Sutton on Sea and Sleaford and also the Mayor of Louth's Variety evening. The Mayor of Louth's chosen charity this year is Bobs Brainwaves. Bob has Alzheimer's. His wife wrote a list of charities etc that can be contacted. If you need this, please contact the Town Clerk.

Liz Day
Mayor of Spilsby



**SPILSBY
TOWN
COUNCIL**

DATES OF MEETINGS 2024-2025

All meeting to start at 6:00pm unless stated otherwise

FULL COUNCIL MEETINGS

Wednesday 24th July 2024

August Recess

Wednesday 25th September 2024

Wednesday 23rd October 2024

Wednesday 27th November 2024

December Recess

Wednesday 22nd January 2025

Wednesday 26th February 2025

Wednesday 26th March 2025

It's the start of something special.



It's that **Newton Fallowell** feeling.

We're an estate agency that puts people at the heart of property. Landlords, buyers, renters, vendors... they'll all say similar things. That we know the Midlands like no-one else. That we care more about service. And that while others go through the motions, we'll go the extra mile for every single customer.

Pop in, call **01790 755222**
or search **Newton Fallowell**



ELDC Councillor Ellie Marsh

Hopefully summer is finally here and we can look forward to some glorious British weather over the coming months. It feels like it has been a long time coming but it's just in time for all the wonderful events that are due to take place in Spilsby this summer. We have a Music Festival on 12th July followed by the Spilsby Show on 14th July.



What a great weekend of fun and a great opportunity to showcase Spilsby. Both events are organised and managed by volunteers. If you feel like you have some spare time please get in touch. Many groups in Spilsby would welcome more volunteers even if it's only an adhoc hour here and there. Over the 6 weeks school holidays, Magna Vitae will be running their schools out programme, the sessions are free to attend. Details can be found on the Magna Vitae website and Facebook page.

A successful Teenage Market took place on 18th May organised by ELDC. We are holding another one on 14th September and would welcome any groups in the town to get in touch. It's a great opportunity for entrepreneurs to sell their wares but also for groups to do some fundraising. Please get in touch if you would like more information

I still have some grant funding available and I welcome any groups to get in touch. Most recently I have helped the Football Club and Pavilion with funding for additional pitch drainage and the Scouts with some funding for their kitchen project. It's great to be able to help with projects that are used by so many residents.

LINCOLNSHIRE COUNTY COUNCILLOR WENDY BOWKETT

Please get in touch with any issues you may have with Lincolnshire County Council

Cllr Wendy Bowkett

Email cllrw.bowkett@lincolnshire.gov.uk

Phone 07917494478

Executive Member for Adult Care and Public Health
Lincolnshire County Council
Wainfleet and Spilsby Ward

SPILSBY ROTARY CLUB ~ SPILSBY SHOW ~ SPILSBY TOWN EVENTS

SPILSBY SUNSET FESTIVAL 12 JULY 2024

SPILSBY RECREATIONAL GROUND
~ Licensed Bar ~

JENNA G

HOSTING

11th HOUR

HITS OF THE PAST 4 DECADES

FEEL THE NOIZE

INDIE ROCK BAND

MONO NO AWARE

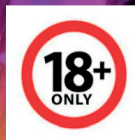
CLASSIC HOUSE

DJ OZ

REGGAE VIBES



£20 PER PERSON
6pm - 11pm



Wristbands available from Kameo Nails & Beauty Salon & If Only



Want to meet active and enthusiastic people with a creative and positive approach to their leisure time, and expand your horizons?

Why not come along and see what the u3a is about?

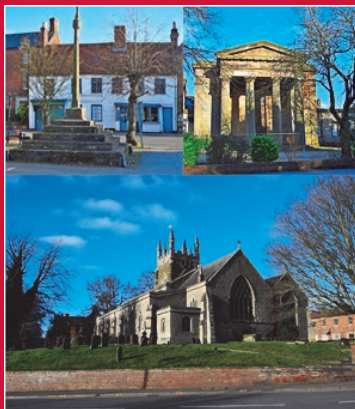
Our main meeting is in the Franklin Hall on the second Wednesday of the month 2-4pm. There you can find out about some of the activities on offer in the coming month, enjoy refreshments and listen to an interesting speaker. In July you can hear about 'Milton Keynes to the Mississippi', and in September 'The district herbalist'. Once you have joined for £15 for the year, you have access to many different groups. If there isn't one you fancy, you could start your own. The only extra cost is entrance fees for some outdoor visits.

SPILSBY TOWN TRAIL

If you are interested in exploring the history of Spilsby via its buildings, then look out for the brand new Spilsby Town Trail, available now. The new leaflet takes you on a walking tour round the town looking at its Grade I and II listed buildings (with a few surprises) to highlight the history of Spilsby. It has been created by the Spilsby u3a Local History Group, and funded by Spilsby Town Council.

There's a map and plenty of photographs, and it is available free of charge from the Franklin Hall, Spilsby Library and New Life Centre. You don't need to do the whole trail in one go as there are various routes leading off the Market Place, although the official starting point is the Buttercross. Even those who have lived in the town for a long time may learn something new.

Spilsby Town Trail



A stroll around Spilsby discovering its history
and its historic buildings
1.5 miles (2.5 km)

Funded by Spilsby Town Council and Spilsby u3a Local History Group.



**SPILSBY
TOWN
COUNCIL**

u3a
learn, laugh, live

Spilsby Show

Sunday 14th July 2024
from 10am

**Spilsby Recreation Ground,
Spilsby, PE23 5HL**

FREE Park & Ride

VANDER WHEEL
CHILDREN'S ENTERTAINMENT
VINTAGE CARS & TRACTORS
10K RACE, DOG SHOW
HEAVY HORSES & SHEEP
TRADE STANDS

**Advanced tickets on
sale now until 12th July:**
Adults £7, Family £18

(Family ticket = 2 Adults, 2 Children)

Tickets on the Gate:
Adults £8, Children £3, Family £20

**Show
sponsors:**



www.spilsbyshow.co.uk

Classic Garden Services

SERVING SPILSBY AND BEYOND

*grass cutting, general tidying, pruning,
small tree lopping, hedge trimming, major cutting back
and clearance of overgrown areas*

Call Terry: 07368 538099

www.classicgardenservices

FIND US ON FACEBOOK

Tongs of Spilsby
Hardware & Cookshop

Hardware
DIY – Cookshop

1 HIGH STREET • SPILSBY • LINCOLNSHIRE • PE23 5JL

Tel: 01790 752548

Spilsby Recreation Ground Developments

Since the last Explorer, the Pavilion & Recreation Ground have submitted a Planning Application with ELDC for the development of the Pavilion. If you recall, the Trustees are completing the development in two phases, Phase One the Playzone & Skate Park and Phase Two the Pavilion and Car Park.

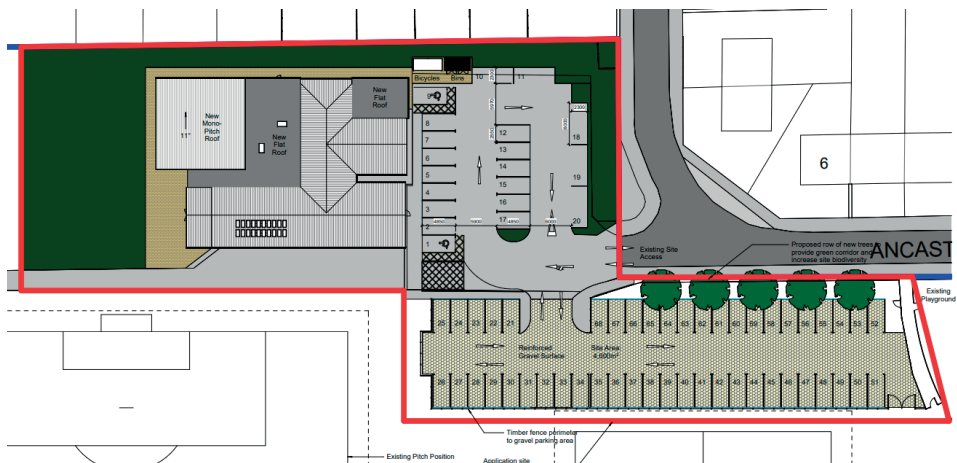
You can view the application online with reference S/165/00200/24

Please take a look. A lot of hard work, time and money has been spent ensuring we cover all bases for the future of this community asset. We all know that the current set up is outdated, and we need to develop to bring in line with Safeguarding, the increased demand, and new footballing requirements.

As the Spilsby Explorer is a Community Wide Publication, the Trustees would like to take this opportunity to highlight the important elements we have covered that affect you, the residents and users.

1. Better changing facilities for the footballing teams as we look to increase demand, introduce women's and disability football to the area. New changing rooms, showers and toilet cubicles.
2. A new Clubhouse/cafe/bar for local residents, footballers, spectators and pavilion users. Allowing more functions, more events and an increased revenue stream.
3. A new Site Office, for a Full Time Site Manager, available because of the increased revenue and needed to oversee the site, security, the facilities and any issues. Hopefully this will add a new layer of security and peace of mind for those near the Pavilion.
4. A new Hall. Used as an overspill for the current hall as it is used most evenings. Both halls will now join together to form a larger space for events like presentation evenings, Spilsby Show, kids parties and other events.





5. Increased Car Park - We know the parking is a nightmare, and we've addressed this. A new reinforced Gravel Car Park provides better parking and hopefully an end to parking over resident's driveways.
6. Drainage - New drainage will be introduced near the car park extension and fed into the local drain to hopefully eliminate any flooding coming from the field.
7. Safety gate for entrance to the Field from beside the Play Park.
8. A new Meeting Room for meetings, training and community development courses.
9. Solar Panels for better energy efficiency.
10. A new Players exit to the rear where it will loop round the building to the main pitch.

The Trustees want to explain everything, and hopefully we've done this here. It is an exciting time, a time to sort out issues that you've expressed in the community engagement. It is exciting to envisage the potential of the Pavilion in the years to come. The area is underfunded and the Town, Footballers, Residents and Visitors deserve a facility that delivers in all areas.

If there are any questions at all, you can email tony@spilsbyrecreationground.co.uk or WhatsApp 07887930132 and we'll try and get back to you as soon as we can. Please understand the Trustees are all volunteers, and sometimes we can't reply straightaway, but we'll try our very best.

Please support our development here with positive comments. As always, the Trustees know the problems. Problems are seen in every Town, but we are trying our hardest to give something of substance to the community to make it a better place for all that visit.

Thank you on behalf of the Trustees.



Reynard St, S
01790

Come and say hello and
have a chat with one of our
friendly team members who
are waiting to assist you
with your motoring needs

Opening Times

Mon - Fri

8:30am - 5:30pm

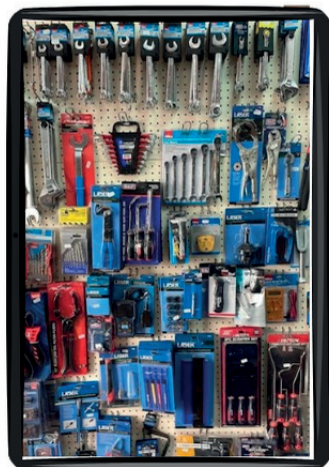
Find us Here



Time for a su
Your One - Stop Local Mot

SPILSBY Motor Spares

pilsby, PE23 5JB
0 754699



ER PLATES
DE HERE

Summer clean?
Motor Spares Shop



St Barnabas

Do you have beautiful border and dazzling dahlias? If so, would you be interested in opening your garden for St Barnabas Hospice?

After seeing the success of other hospices' Open Garden schemes, they are launching their own initiative this Summer to celebrate the large number of wonderful and creative green spaces across the county. The hospice are appealing for anyone that would be interested in holding an Open Garden on behalf of them this Summer or Autumn. They would love a variety of garden sizes and styles to showcase the beautiful green spaces of Lincolnshire. You might also want to sell refreshments or have a plant sale to really boost your fundraising.

St Barnabas Hospice is the leading charity in Lincolnshire providing palliative and end-of-life care to adults living with a life-limiting or terminal illness. Their vision is a world where dying with dignity, compassion and having choices is a fundamental part of a life. Their mission is to ensure all individuals facing the end of their life in Lincolnshire receive dignified, compassionate care when they require it and where they ask for it.

Local Community Fundraising Officer, Fiona Malloch-Rear said, "The Open Gardens events will celebrate the beauty of gardens big and small, flourishing with flowers or bountiful with delicious produce. By opening your garden to the public for us, you're helping to raise the vital funds to allow us to deliver specialist end-of-life care for your local community. Your garden can make a difference in the lives of those in need."

If you would like more information about our Open Garden scheme, please do get in touch with the St Barnabas Fundraising department, who will be able to support you with the next steps and provide you with lots of guidance for the event. Email fundraising@stbarnabashospice.co.uk or visit <https://stbarnabashospice.co.uk/opengardens/>





St Barnabas

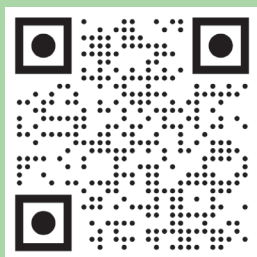
Open your *garden*

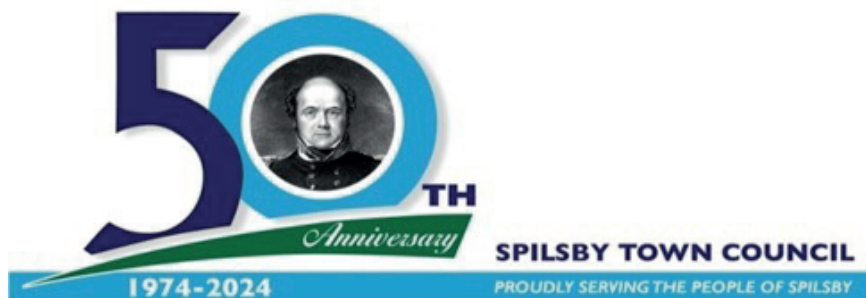


in support of
St Barnabas
this summer

Do you have a hidden gem of a garden, here in the heart of Lincolnshire? We're looking for local folk to open their outdoor spaces this Summer, and make a meaningful difference in the community.

Whether your garden is humongous or humble, cute or quirky, **become a host by scanning the QR code!**





TOWN CLERK'S UPDATE

Hello,

Earlier this year Spilsby Town Council celebrated its 50th anniversary of proudly serving the community. I'd like to thank J&A International for designing the commemorative logo and to the Town Councillors who saw this idea through from its idea to fruition.

All at the Town Council continue to work hard to make a difference in the community. I'd also like to take this opportunity to thank the outgoing Mayor, Cllr T Kemp, for all his hard work in the role, and welcome Cllr Liz Day to the role as the Town's new Mayor.

PLAY AREA

The Town Council hope the installation of a new play area at the Recreation Ground on Ancaster Avenue will take place later this year. This will be phase 1 of the project. The play area will be added to in phases over a number of years.

ALLOTMENT GARDENS

The Town Council manage 39 allotment gardens, on Hundleby Road. There are currently limited plots available to residents within a 5-mile radius of Spilsby. Please contact me if you are interested in any of the vacant allotments.

COMMUNITY SPEEDWATCH

The speed watch team do a great job in contributing to keeping our roads safe. We are always looking for new volunteers to join the group. If you would like to participate, please contact me.

COUNCILLOR VACANCIES

There is currently a vacant seat on the Council. If you would like to join us and help make a difference in your community by becoming a Town Councillor, please do not hesitate to contact me for more information and an application form.

RECOGNITION DAY 2024

The Town Council hosted an event to recognise all those in the community that help make Spilsby a better place. Congratulations to all that were nominated and to the winners!

D-DAY COMMEMORATION

The Town Council commemorated the 80th anniversary of the D-Day landings on 6th June by lighting the beacon. Thanks on behalf of the Town Council to those who attended.

Best wishes,

Jack

Town Clerk

townclerk@spilsbytowncouncil.gov.uk

01790 753189



Beaver Fencing

All types of fencing & gates supplied and fitted.

07594566507

Call Lee to arrange a free quote.

★★★★★

 @beaverfencing 

  5 Star Customer Rating



SPILSBY LIBRARY

DO YOU HAVE CHILDREN AGED 5-11?

If so, you will be interested in

THE SUMMER READING CHALLENGE

at Spilsby Library, in Coop Food Store, Post Office Lane

Open 9-5pm Monday to Saturday

WHAT IS THE SUMMER READING CHALLENGE?

The Summer Reading Challenge (SRC) happens every year in libraries. It is supported by The Reading Agency - a national organisation. It is also supported by schools. It's designed to encourage junior school children to continue reading during the summer holidays. Children borrow and read six books to complete the challenge. This year's theme is Marvellous Makers.

HOW TO TAKE PART IN SRC

- Children can register for the Summer Reading Challenge any time from 8th July. There needs to be a volunteer at the library (times when a volunteer is available posted on the library door)
- Child needs to be a member of the library - if not they can join. A parent or guardian is needed when they join. Joining the library and the SRC are FREE.
- It is recommended that they borrow two books at a time (any books - fiction or non-fiction, depending on age and interest).

- At each stage of the challenge there are small prizes.
- In the library there are activities for children, including a 'hunt the characters' and drawing / colouring activities.
- When they complete the Challenge (6 books read) they receive a certificate and medal.



SPILSBY TWINNING ASSOCIATION

Spilsby is currently twinned with Fresnay-Sur-Sarthe in France and Bassum in Germany.

On 18 May 2024 Spilsby Twinning Association welcomed a party of 22 residents from Fresnay-Sur-Sarthe for a jam-packed weekend of events in and around Spilsby.

Following their arrival on the Saturday, they were taken to have a look around the Gardens and House at Gunby Hall, followed by refreshments in the Courtyard. Two of the Spilsby Twinners ably explained in French the history of the House and Gardens.

On Saturday evening, in conjunction with Burgh Le Marsh Twinning Association there was a formal reception and 5 course dinner at the Masonic Hall, Skegness. This was an ideal opportunity for everyone from Spilsby, Fresnay-Sur-Sarthe, Burgh Le Marsh and their French Twin Town, Beaumont-Sur-Sarthe to get together to celebrate their alliances. The meal was followed by a disco which was enjoyed by all who attended.

On Sunday, the day started with a visit to the Bubble Car Museum at Langrick. There was an opportunity for everyone to see some Bubble Cars being taken out for a drive and a chance to see up close

and personal the workings of such unique vehicles. Inside the museum there are numerous vehicles both from the UK and abroad. It also gave everyone a chance to see various household items, toys, beauty products and clothes from a bygone era.

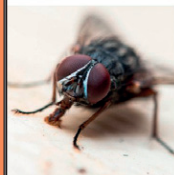
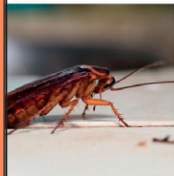
After an afternoon of time with their individual hosts where some visited Woodhall Spa and some had a leisurely lunch at the Walled Garden, Baumber, the group met up again for a traditional Fish and Chip supper in Skegness. This was followed by a short bracing walk along the Promenade and a final celebratory drink in one of the many bars in Skegness.

All in all, a very enjoyable weekend for both the French Visitors and English Hosts.

The next Twinning Visit is due to take place in August when a party of 10 from Spilsby will be spending the weekend with their Hosts in Bassum.

If you are interested in joining the Spilsby Twinning Committee, be a host when our German friends from Bassum visit Spilsby in 2025 or wish to travel to Fresnay-Sur-Sarthe for a chance to enjoy French hospitality, then please contact our Chairman, Shawn Thomas by email sthomas001@btinternet.com.





Pest Detective

PEST CONTROL & MANAGEMENT

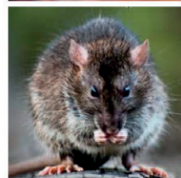
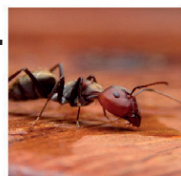
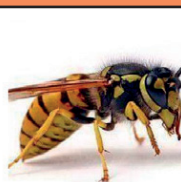
We can offer you a full range of services to cater for all your Domestic, Agricultural and Commercial needs.

CALL 07707 727770

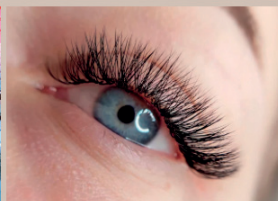
andy@pest-detective.com

www.pest-detective.com

Pest Control and Management across the Lincolnshire Wolds from Lincoln to our fantastic Coastline.

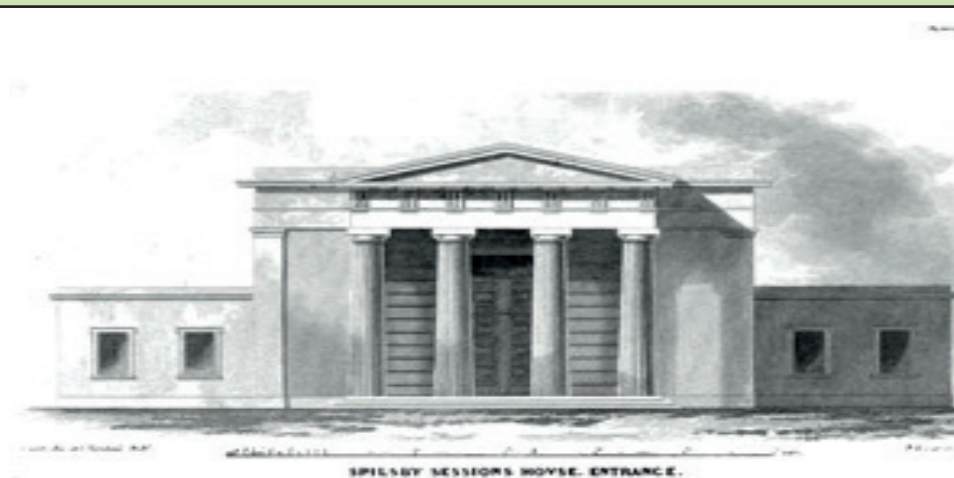


Lashes, Nails, Tanning Beds Hair, Makeup & More



The house of beauty, Cornhill, Spilsby PE23 5JP

Socials @hofbeauty08 Tel 07808568403



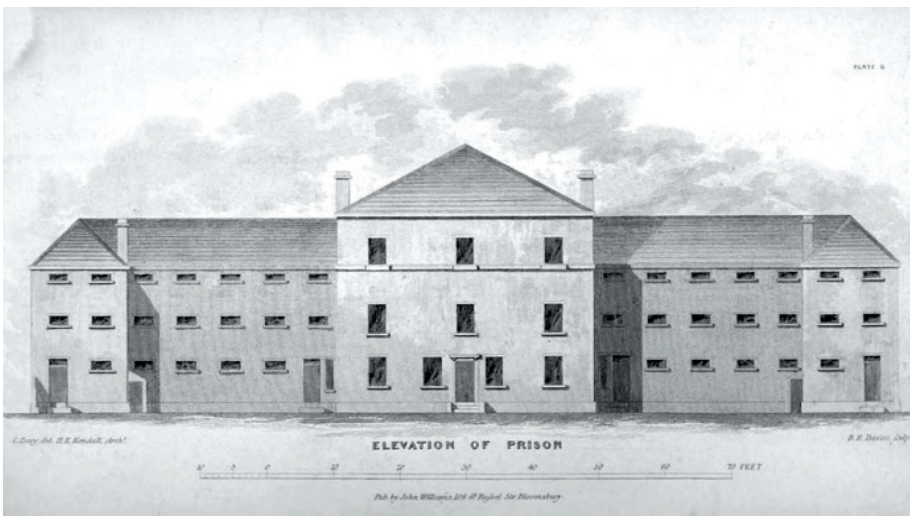
OLD NEWS IS NEW NEWS

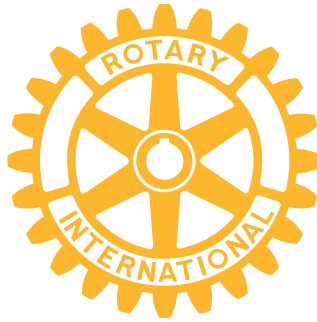
Alongside all the ongoing necessary meetings and discussions about planning, designing, surveys and so on behind the scenes, the Spilsby Sessions House Project continues to develop in more creative ways, offering opportunities for members of the public to engage before the building re-opens for business.

As part of Spilsby Heritage Day on Saturday 25th May, we presented a table and display of archive material relating to the earlier days of the Sessions House and information about a new research project. Having been built by 1827 as a “House of Correction”, we have a small collection of photographs and documents which offer glimpses into the history of the Sessions House as an important court of law (for Quarter Sessions) and prison, and subsequently as a magistrates’ court and police station. The building was redesigned in the 1980s and re-opened as a theatre in 1984. Also in our archives are the plans relating to this re-purposing and a random collection of posters and flyers advertising a wide variety of artistes who performed at the theatre up to recent times.

A new research project, *SHARe*, has recently been launched to delve deeper into archives and extend our knowledge and resources. The aim is to discover, through conducting research into library and online archival sources, real-life stories of some of the individuals who experienced the law courts and justice system at Spilsby, from the early 19th century. We will then have a collection – a new archive – of material which will be accessible and available to use in creative ways in and out of the renovated building, to bring to life the heritage of Spilsby and its sessions house. Another aspect of this project is oral history. There are people who have living memories of the old police station and the magistrates’ court. There are even more people who have fond memories of attending live performances at Spilsby Theatre. We would like to record these memories as a living history archive.

The **SHARE** project is being undertaken by a group of volunteers. If you would like to be interviewed to record your stories relating to the Sessions House orally, please get in touch. Alternatively, you are invited to record your memories in writing (or text document) and send them to us. Either way, or to find out more information about the project, please contact Lorraine at: friends@thesessionshouse.org.uk. There will also be an opportunity to learn more at the Friends stall in the craft tent at Spilsby show. In addition, Bruce and **SessionsArts** will have a performance area and children's activities on the field at Spilsby show.





ROTARY CLUB OF SPILSBY

Spilsby Rotary Club has a new president and a new website that will highlight the varied programme of speakers and activities planned over the next 12 months.

The Rotary year runs from the start of July and outgoing president Neil Blanchard, who has led the club on two separate occasions, passes the honour to new president Rodney Hobson at a handover ceremony on 4th July.

Rodney is a former Fleet Street journalist who held senior positions on The Times and contributed to other national newspapers as well as working on the staff of publications in Asia. He has also written a series of murder mysteries based in Lincolnshire. He now lives in his wife Judy's home town of Spilsby.

First event planned for the new Rotary year was a visit by Dave Middlehurst, the former headmaster at Eresby Special School in Spilsby, who is a talented guitarist and who agreed to bring his For Folks Sake folk group along to entertain Rotarians and their guests.

Speakers over the next 12 months include a man who was evacuated as a child from London in the Second World War, an NSPCC volunteer from Grimsby, a senior manager at the Victoria and Albert Museum in London and an expert in oil exploration.

There will be repeats of some popular visits such as stock car racing at Orby, ten pin bowling at Skegness and theatre at Louth.

Halloween night falls this year on Thursday, the day when Spilsby Rotary meets, so members will be invited to scare the wits out of each other with ghost stories true or made up.

Spilsby Rotary will again be celebrating Burns night, once a staple part of the year when there were several members of Scottish heritage and revived in 2024 under Neil Blanchard, but for balance there will be a meeting to mark St George's Day in 2023. The club will commemorate 80 years since VE Day next May.



Ready to serve: Rotarians line up to offer refreshments on Bike Night

Fresh from his triumph in organizing the packed-out Abba night in the Franklin Hall earlier this year, Rotarian Ian Evison has plans for a BeeGees tribute band early in the New Year. It would be great if this could become an annual event alongside Firework Night, the Rotary Carol Service and Bike Night, which are all organized by Spilsby Rotarians.

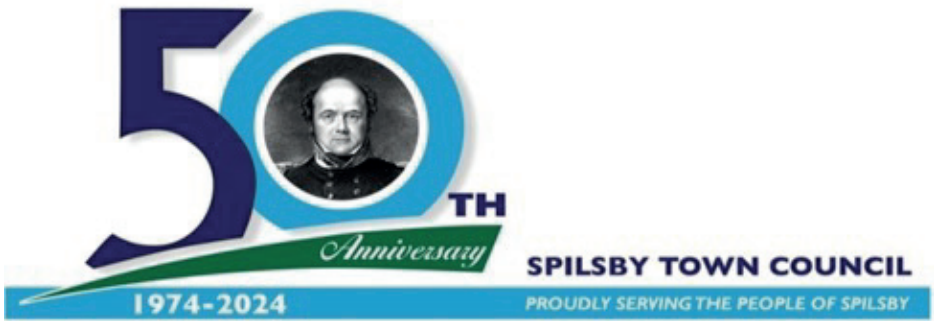
Meanwhile Rotarian David Paul, who launched the Rotary Club of Spilsby

website just over a year ago, has been working hard to upgrade the site so it will now have a much wider, up-to-date and relevant content.

If anyone living in the Spilsby area is interested in joining this exciting group dedicated to public service and work in the community they can email the new President at rodhobson@hotmail.com or club secretary Pete Butler at petesuzzybutler@hotmail.co.uk



There was something in the air that night:
The dancefloor was crowded as the Abba tribute band played



Advertise in the Spilsby Explorer Magazine

GET YOUR BUSINESS NOTICED

This is a great opportunity to advertise and promote your business in the local community by advertising in the Spilsby Explorer magazine, issued by Spilsby Town Council.

1500 copies are delivered to every household and businesses in Spilsby.

£45.00 for a full page per issue

£25.00 for half page per issue

£15.00 per quarter page per issue

Discounts available for advertising for a full year.

To request a space in future issues please contact:
townclerk@spilsbytowncouncil.gov.uk
01790 753189



SPILSBY TOWN COUNCIL

Frequently asked questions to Spilsby Town Council

Q1. How do I apply for a grant/donation from Spilsby Town Council?

- A. Grant application forms are available on our website (spilsby.parish.lincolnshire.gov.uk)
Grants are available to any local group or organization in Spilsby.

Q2. How do I book the Mayor for my event?

- A. Mayor booking forms are available at <http://parishes.lincolnshire.gov.uk>
Or contact the Town Clerk, 01790 753189 Email: townclerk@spilsbytowncouncil.gov.uk

Q3. How do I get a Market Stall in Spilsby?

- A. This is the responsibility of East Lindsey District Council.
To apply for a stall please complete an application form available at
www.e-lindsey.gov.uk Booking a Market Stall or Email: markets@e-lindsey.gov.uk

Q4. My green bin wasn't emptied. Who do I contact?

- A. This is the responsibility of East Lindsey District Council.
Bin collection dates are listed on the website: www.e-lindsey.gov.uk
or telephone: 01507 601111

Q5. Who do I report a pothole to?

- A. This can be reported using www.fixmystreet.com

Q6. My Grass Verge needs cutting. Who do I contact?

- A. Lincolnshire County Council cut the grass verges three times a year.
Spilsby Town Council are subsidized by LCC to carry out additional cuts during the year.
Please contact the Town Clerk on 01790 753189 with details of any areas causing concern.

Q7. Who should I contact to discuss my housing application?

- A. This is the responsibility of East Lindsey District Council. Details can be found via the website. www.e-lindsey.gov.uk

Q8. Who do I contact to gain access to the CCTV footage in town?

- A. The Police are the only organization with access to the footage, following the reporting of an incident.

Q9. Who do I contact to report Dog Fouling?

- A. This is the responsibility of East Lindsey District Council. Details can be found via the website. www.e-lindsey.gov.uk

Q10. Who do I report vandalism in the Play Area (Boston Road Recreation ground) to?

- A. Contact the Town Clerk on 01790 753189

Spilsby Christian Fellowship

Summer Update

As we move towards the summer holidays, longing for some sunny weather, we reflect on the last few months. "Come & Play" our baby & toddler groups have been well attended, with a few new faces warmly welcomed in. It's great to hear/see how the adults and the children enjoy the sessions and benefit from being with others as they discover new play opportunities, make friends and support one another. Messy play is a favourite – oats, flour and ground cornflakes are a favourite – though it does leave a trail in the hall – it's not as bad as when mixed with water, and it's easier than mess at home!!! Fortunately it's easily cleared, and very quickly the hall is ready for its next user – whether it be our new expectant mums – for antenatal classes, individuals picking up a food parcel, or our "coffee n chat" guests.

Our Primary Youth Group (Yr R – 6) this term has been really popular, with up to 32 children per session – we have had to enlist more adult volunteers. The young people love the games, crafts and generally getting together with others, and it's great for us to see the changes as the children settle in, make friends – often from different schools, try out new things and build their self-esteem and confidence.

This term Vicki and I, thanks to the Lincolnshire Family Hubs have enjoyed some "Early Years Training" opportunities and hope our new knowledge will enhance our sessions and enable us to support parents further. I am excited to



share that this has given me an invitation to the local Early Years Network Support meetings to share what we are doing here at the Fellowship, and will allow us and our service users to access the benefits of partnership working.

After persuasion, we have just applied for a UK SPF GRASSroots grant. As an older building (built 1950's) whilst improvements have been made to the toilet and kitchen facilities, heating and access to the hall is an issue and results in some being unable to use the hall or our services. If successful the grant would enable us to install a suspended ceiling, and improve access at the front and rear. Quotes put the cost at around £28,000, the grant is capped at £24,999, and as part of the application we must secure 10%. So far we have secured just over £1250, from our own fundraising, and need to raise another £1,800 before September 2024. If this is something you would be able to help us with either by a financial donation, or something else, please do get in touch and I would be able to supply you with more details. I can be contacted by popping in to the Fellowship – I'm there most weekday mornings, or via email spilsbychristianfellowship@live.co.uk or phone 01790 752457

Thank you

Judith, Nigel and all at the Christian Fellowship

HOW IS THE TOWN'S FIRE STATION AND CREW PERFORMING?

It's been a steady period these last few months, with no particular incidents of note that the crew have attended. However, there is a new member of the crew in Spilsby who recently passed out from training school, Harvey, the son of Crew Manager Craig. He has already been to several incidents and this ensures a healthy future for the station.

If you feel you could be apart of the crew, why not pop down to the station during their drill night on a Thursday evening from 7pm

So how many incidents has the crew attended between September 2023 & January 2024?

They responded to the following number of call outs

February – 17 calls

March – 14 calls

April – 20 calls

May – 13 calls

Important Fire Safety considerations as we enter the new year.

Do you know a Sherman? If you know anyone in the following groups, please encourage them to refer into Lincolnshire Fire & Rescue for a free Safe & Well check by calling the number below:

Smoker, Hoarder, Elderly, Reduced mobility, Mental health issues, Alcohol or drug dependant or needing care or support.

Product recall information

The following items have been identified as needing to be recalled by the Office of Product Safety and Standards.

Flying Tiger Play Sword Legesvaerd – Risk: choking and injuries

Wireless Microphone Hifi Speaker sold via Temu – Risk: fire & explosion

Venicii Car Seat – Risk: injuries

UPP Battery E bike Battery packs sold via Amazon, AliBaba, Ebay – Risk: fire

Ideal Heating Logic 2 Combi & System Boiler Range – Risk: fire

Grey Teddy Fleece Cushion sold by Next – Risk: fire

Product Recalls and Alerts - GOV.UK (www.gov.uk)



You can follow Spilsby Fire Station and the crew on Facebook or Twitter



www.facebook.com/spilsbyfire



[@spilsbyfire](https://twitter.com/spilsbyfire)



**Visit our stand
at the
Spilsby Show.**

Help the spirit of Remembrance with The Royal British Legion

In this 80th Anniversary year of the D-Day landings, the Spilsby and District Branch of the Royal British Legion took part in the ceremony of lighting the Spilsby beacon and the commemoration pageant held at the Hundleby village hall on the 6th and 8th of June respectively.

Remembrance of such events is core to the Legion's existence but, more importantly, we also have a duty of care for all those ex-service people and their families from World War 2 until the present day which is paid for by you buying poppies in November and by people joining the Legion to help keep burning brightly the flame of remembrance of the debt we all owe our armed services for keeping us safe and secure in past conflicts and in an ever more dangerous world. Legion membership is

open to everyone, not just former members of the forces. You don't have to march with us (unless you want to) but by joining us you can truly help to maintain the spirit of the Legion for current and future generations in our work to support veterans and their families in need.

The cost of membership is a very reasonable £18 per year. Joining is easy and full details can be found on the Legion's website britishlegion.org.uk or phone 0800 307 7773 (it's free).

If you need further information you can also contact the Branch's Chair, Suzanne Scott, on:- spilsbydistrict.chair@rblcommunity





**2nd Spilsby Scout Group
offers scouting from our
Headquarters here in
Spilsby, just off West End.**

Scouting has changed considerably over the years.

With the introduction of Beaver Scouts for children aged 6-8yrs old in 1986 and most recently the introduction of Squirrel Scouts in 2021 for children aged 4-6yrs old.

Our scouting is also now accessible to everyone, no matter what their gender. Girls were allowed to be venture scouts from 1976, but it took until 1991 before they were allowed to join the rest of the movement. A concept we find hard to understand in our modern society.

We are extremely lucky with our volunteers, each has their own skills and knowledge that they bring on board when they decide to join us. However, through scouting we can expand their current skills, or even learn new ones.

At 2nd Spilsby we have our own activity team. Within this team we have a water team, that offers canoeing and kayaking, an archery team and a tomahawk team, meaning that our children can access these activities without having to rely on external providers.



**For youth places or to enquire about volunteering
please email info@2ndspilsby.org.uk**

St James' Church, Spilsby



We are always pleased to welcome you into St James' Church. The door facing Church Street is open every day during daylight hours, so do pop in and take a look.

In addition to our monthly coffee mornings, we will also be holding a couple of events over the summer which, hopefully, will be of interest.

On Friday 16 August we will be holding a Family Activity morning from 10am – 12noon. Come along and join in the fun. There is no need to book – just put it on your calendar and turn up. Children must be accompanied by an adult.



As part of the Lincolnshire Wolds and Coast Churches Festival we will be hosting a quilting exhibition in St James' Church. It will be open from 10am – 4pm on Saturday 7th September and 10.45am – 4pm on Sunday 8th September. Refreshments will be on sale, and there will be a trade stall provided by Camelot Crafts in Friskney. If you are a quilter and would like to offer something to display, please give us a ring on 01790 752526.

HomeFurYou

After seven successful years running our cat sitting business HomeFurYou in Bedfordshire, we bade a fond farewell to our 154 customers, 300 cats, 30 chickens, 20 guinea pigs, 10 rabbits, 2 hedgehogs, 1 tortoise and a stick insect.

Oh, the stories we could tell about that time. The highs the lows, the adventures we had and the friends we made. You could almost write a book about it. Wait a minute - we have! It's available on Amazon and called Telling Tails - Adventures of a cat sitter. You can order your copy online.

Anyway, the time came to move house and start a new life near the Lincolnshire coast. We've now been here for nearly a year and half and we're loving getting to know the fine people of Spilsby and the surrounding villages (and their pets!).

So, if you live in the area, we can cover your holidays, weekends away or just one-off feeds. We look after your furry friends and keep your house safe as well as providing regular daily updates with pictures and videos.



We're waiting to take your call and make your getaway a stress-free zone.

Don't forget we throw in cuddles for free!

Martin and Jules x



Old Bolingbroke

Old Bolingbroke is very lucky, for so many reasons, not least of which is our historic Castle, birthplace of Henry IV, and our church, now much smaller than when it was first built. Both were “slighted” (smashed apart) during the Civil War. For those who have wondered why it was built where it is, it was at the head of a large area of fenland, so with the hills behind and around it and the fens in front, more protected than it now looks.

As well as our better known Friends of Bolingbroke Castle and Friends of St Peter and St Paul, and the bell ringers, a dedicated group of volunteers help to maintain our field, the rose garden, village planters, and the summer hanging baskets at the village hall. Another group nurtures the fantastic churchyard. Then there are the cake bakers and jam makers who can always be relied upon when needed (but never taken for granted!).

Ramsden Village Hall (named for John and Eleanor Ramsden who bequeathed the land to the village in 1937, along with the neighbouring George V field is the home of a range of groups who always welcome new members:

Body Blitz for 50+ in the Ramsden Hall Mondays 10-11am - contact Jan Hutson on 07833 331149 for details

Apricity Yoga - Yoga classes every Monday at Ramsden Village Hall at 2pm! On sunny days, we hold our classes outdoors on the grass! You can even book your sessions online at www.apricityyoga.com

Gerry Chappel Keep Fit Exercise Group in Ramsden Village Hall 11.30-12.30 Tuesday - please contact her on 07944670020 for details

Sequence dancing is on Tuesdays – 7 until 9pm

Quilter's Patch members meet every 1st and 3rd Friday at Ramsden Village Hall from 10-3pm. Not just for quilters. The group also has knitters and embroiderers. £8 full day, £4 half day with free tea/coffee and biscuits! For further details please contact Gina Harmsworth 07720394680

These are just some of the groups. There is also a brass band, as well as cycle and running groups using it as a base for races.

In the next edition of the Explorer we look forward to bringing you up to date with progress of those projects we mentioned last time – the Village Hall improvements and work on the Church, the Castle and the Gas House. Have a great summer and we look forward to seeing you if you have time to visit!



Spilsby Recognition Awards

This year the Town Council took an unprecedented approach of using its resources dedicated to the annual Civic Service and holding a Recognition Award Event, to recognise those individuals and groups that have gone above and beyond to help those vulnerable members of our community, aspire and lead others and make Spilsby the great town that it is. The people of Spilsby were asked to nominate worthy winners of 8 different categories, with the Mayor and Deputy Mayor having an award each to recognise anyone who hadn't been included or who they felt deserved to receive an award.

The 8 categories that the people of Spilsby could nominate were:

Volunteer / voluntary group
Impact on wellness / mental health
Sporting achievement
Young adult engagement
Employer of the year
Contribution to the community
People's choice
Best decorated / maintained shop front

There were 374 nominations for the 8 categories, with some strong rationale behind some of them. That was the important part of this process, it wasn't most popular by way of votes, the winners were supported by good rationale by those that nominated them. This made the job of the Awards Committee, made up of one Councillor and the sponsors of the awards, much easier to choose the winners.

The event itself was well supported with around 100 members of the public in the audience. This was also an important part for the Town Council, as we wanted the people of Spilsby to join in with the celebration and be inspired and offer help

to these individuals and groups. There were also some guests in the way of the Deputy Leader of East Lindsey District Council, Graham Marsh, Spilsby's County Councillor, Wendy Bowkett and our Member of Parliament, Victoria Atkins, who each had the opportunity to co-present and speak to the public.

The winners of the Awards are as follows:

Volunteer / voluntary group
Kelly Marvell
Impact on wellness / mental health
Suzy Pearl
Sporting achievement
Eddie Rich & Roy Kelly
Young adult engagement
Sarah Ellis
Employer of the year
Mark Tong
Contribution to the community
Tony Bailey
People's choice – Abi Roberts Dore & Ellie Marsh
Best decorated / maintained shop front
Willow & Grace
Deputy Mayor's award
Judith Coe
Mayor's award
Harvey Marchbank

The Town Council would like to thank the sponsors that helped make this all possible:

Taylor's Renewables
J&A International
GPC Industries
Walnut Care
The Nelson Butt

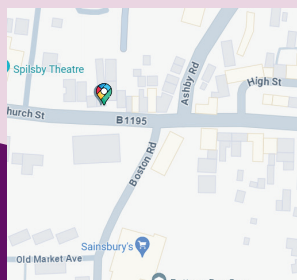




Spilsby Wellbeing Hub New Life Centre, Church Street

Our Wellbeing Hubs provide a safe and supportive space for those experiencing mental health and wellbeing challenges.

We can signpost you to other services in the local area, help you build social networks and develop the knowledge and skills to manage your mental health and improve your wellbeing.



**Spilsby Wellbeing Hub, New Life Centre,
Church Street, Spilsby, Lincs, PE23 5DU**



For more information

Suzy Pearl
(Spilsby & District Community Connector)
suzy.pearl@nhs.net, 07901211220

Call or WhatsApp our Community Connector.
You can find updates on our social media too.

FB: Spilsby & District Wellbeing Hub

H.A.Y. helping people find local resources for mental health and wellbeing. www.haylincolnshire.co.uk





FRANKLIN HALL - SPILSBY

A COMMUNITY HALL (REGISTERED CHARITY), THE PERFECT PLACE TO HOST SOCIAL AND BUSINESS EVENTS IN THE HEART OF SPILSBY

MAIN HALL

FOR LARGER FUNCTIONS AND ACTIVITIES UP TO 300 PEOPLE.
IDEAL FOR COMMUNITY, CHARITY AND COMMERCIAL EVENTS, CLUBS, CLASSES,
SPORTS, WEDDING RECEPTIONS AND PARTIES ETC LARGER MEETINGS,
PULL DOWN SCREEN, STAGE AND MICROPHONES AVAILABLE

CONFERENCE ROOM

OFFERS A MEETING ROOM/SMALLER FUNCTION ROOM FOR UP TO 50 PEOPLE.
PULL DOWN SCREEN AND FREE WIFI OFFERING A FRIENDLY AND
PROFESSIONAL ENVIRONMENT.

KITCHEN/BAR AND LOUNGE

IDEAL SOCIABLE SPACE TO LINK TO THE ABOVE ROOMS AND ALSO IDEAL FOR
SMALLER DINING EVENTS (E.G. COFFEE MORNINGS, LUNCH GROUPS).

Hall Manager's Office generally open Tuesdays 11.15am to 2.15pm
and Thursdays 9.30 to 12.30.

Tel 01790 752913

Email: spilsbyfranklinhall@btconnect.com

Photos and online events diary are available by visiting: spilsby.info/franklinhall