

SPILSBY EXPLORER

WINTER 2024



Photograph by John Wood – Spilsby Resident.



SPILSBY TOWN COUNCIL

CONTENTS

MAYOR'S MESSAGE / SPILSBY TOWN COUNCIL MEETING DATES 2024/ 2025	3
ELDC CLLR ELLIE MARSH – LCC CLLR WENDY BOWKETT	5
SPILSBY LIBRARY	6
ROYAL BRITISH LEGION	9
TIERS OF LOCAL GOVERNMENT	11
SPILSBY CHRISTIAN FELLOWSHIP	12
THE HOUNDS OF LOVE	14
U3A / SPILSBY AND HUNDLEBY WALKERS ARE WELCOME	15
FIRE SERVICE	16
SPILSBY TWINNING ASSOCIATION	20
SPILSBY SESSIONS HOUSE	22
SPILSBY ROTARY	24
SPILSBY TOWN COUNCIL	26
WARM HUBS IN SPILSBY	27
ADVERTISE IN THE SPILSBY EXPLORER	29
ST JAMES CHURCH UPDATE / SPILSBY GOOD NEIGHBOURS	30
ST BARNABAS	34

We would very much welcome any suggestions for future editions of the 'Spilsby Explorer'. Please share any news article. Most importantly please just get in touch, we would really love to hear from you.

The next edition will be published in March 2025.

If you would like to contribute please contact Spilsby Town Council.

Email: deputytownclerk@spilsbytowncouncil.gov.uk

MAYOR'S MESSAGE

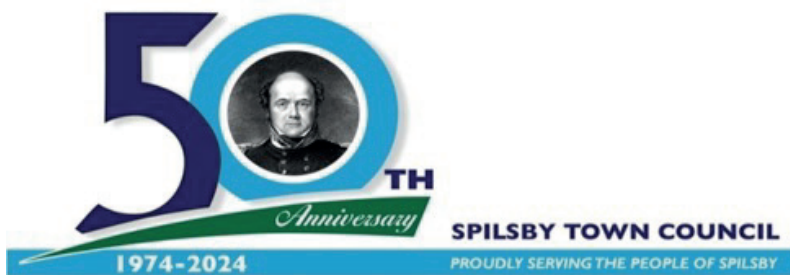
Sadly I have not been able to attend any events recently due to a back injury. I would like to thank my fellow councillors for their help over this period.

I was sad to not be available to present prizes to the Pirouette School of dance, as I know how pleased they were when my predecessor presented them.

Anyway, onwards and upwards.

I would like to wish you all a very Merry Christmas and Happy New Year.

Liz Day
Mayor of Spilsby



DATES OF MEETINGS 2024-2025

All meeting to start at 6:00pm unless stated otherwise

FULL COUNCIL MEETINGS

Wednesday 27 November 2024

December Recess

Wednesday 22 January 2025

Wednesday 26 February 2025

Wednesday 26 March 2025

It's the start
of something
special.



It's that **Newton Fallowell feeling.**

We're an estate agency that puts people at the heart of property. Landlords, buyers, renters, vendors... they'll all say similar things. That we know the Midlands like no-one else. That we care more about service. And that while others go through the motions, we'll go the extra mile for every single customer.

Pop in, call **01790 755222**
or search **Newton Fallowell**

 **NEWTON
FALLOWELL**

ELDC Councillor Ellie Marsh

Winter is here again, how quickly another year has passed us by. I hope you can all look back on 2024 and find something to be grateful for, however big or small. Christmas and the New Year are often seen as a time to reflect and look back over the last 12 months and what we have achieved. As a town we enjoyed our first music festival in years thanks to the Events Committee, during May we held our first local history event, Spilsby Town Council have arranged new play equipment to be installed on the park, Spilsby football teams have gone from strength to strength, works have begun at Spilsby Sessions House and we continue to be a town where new people want to move to.



Over the festive season we have got lots of events taking place, the town will be decorated with Christmas trees and festive lights, and many will be enjoying festive fun. However if you find it all too much please reach out and try visiting one of our warm spaces in Spilsby, these can be found at the Christian Fellowship and the New Life Centre. More details on warm spaces can be found at www.e-Lindsey.gov.uk and warmwelcome.uk/find-a-space

East Lindsey District Council offers a number of support options to help you get through the winter, these can be accessed via the community and wellbeing section on their website or by calling them on 01507 601111

As we hurtle towards the new year what should we aim for in 2025?

Please contact me with any suggestions Ellie.marsh@e-lindsey.gov.uk

Lincolnshire County Councillor Wendy Bowkett

Autumn seems to have arrived very quickly with the nights starting to draw in. This brings a worrying time for many people with winter approaching and bills rising. If you need help or advice please go to 'The Connect to Support' Lincolnshire website or call 03003038789.

The paths on Boston Road had a reconstruction and resurface in the summer, the new surface and road crossings did take a long time to complete but has made a huge improvement to the area for residents.

Flu vaccinations to over 65's, pregnant women and certain long-term conditions are now available. Please check with your surgery for when they will be running clinics. The next round of the Covid 19 vaccine has now commenced, if you are eligible you will be contacted.

The 111 mental health support is now live, if you or a family or friend needs help please dial 111 and press option 2, the service is 24hrs, 7 days a week for all ages and this will provide much quicker help in times of crisis. All calls will be answered by a dedicated member of the mental health team.

Lincolnshire county council leader Cllr Martin Hill along with Cllr Colin Davie have met with Norfolk, Essex and Suffolk councils to discuss a collaborative approach to opposing the planned pylons across our area. All agreed that everything must be done to try and stop them, a further meeting in the next few weeks will take place to agree next steps.

Please get in touch anytime for help with issues you may have either email me cllrw.bowkett@lincolnshire.gov.uk or call me on 07917494478.



SPILSBY LIBRARY

is a community library, run by volunteers.

It is located in the
Lincolnshire Co-op Food Store, Post Office Lane
and is open
9-5pm Monday to Saturday

During opening hours you can borrow or return books and use the computers (you need your member number and PIN to log in). During most of the opening hours there is a volunteer on duty to assist you. When a volunteer is present you can use the computers if you are not a member and join the library.

We also offer a printing / photocopying service
(when a volunteer is on duty and for small charge).

WHAT'S BEEN HAPPENING AT THE LIBRARY?

We hosted four groups of children (aged 4-11) from local groups so they find out about the **Summer Reading Challenge**.

Over 30 children took part in the Summer Reading Challenge and we had a certificate presentation for those who completed the challenge.

We hosted drop in sessions by **Lincs Digital** help local people with their IT needs.

They also ran a bespoke session for our library volunteers.

WHAT'S NEW?

We now have a selection of **local and national newspapers** which you can read in the library.

Story and Rhyme Time for pre-school children will start on Wednesday 6th November 11.45-12.15. This is a weekly event - if you are interested just come along

BOOK SALE

Our popular book sale started on Tuesday 1st October to coincide with Lincolnshire Day.

All proceeds go to the Co-op community champion charity.

Come along and grab yourself a bargain.

WOULD YOU LIKE TO HELP RUN THE LIBRARY?

We are always looking for new volunteers to join our friendly team. If you have a few hours spare a week, why not consider volunteering at the library? You need to have basic computer skills, but full training is given on all aspects of the role, and you will be supported by other volunteers.

If you're interested, go along to the library where you can talk to any volunteer about what the role entails. Here you can also pick up an application form, and if you give your contact details to the volunteer, the volunteer coordinator will get in touch with you.



Classic Garden Services

SERVING SPILSBY AND BEYOND

*grass cutting, general tidying, pruning,
small tree lopping, hedge trimming, major cutting back
and clearance of overgrown areas*

Call Terry: 07368 538099

www.classicgardenservices

FIND US ON FACEBOOK

Tongs of Spilsby
Hardware & Cookshop

Hardware
DIY – Cookshop

1 HIGH STREET • SPILSBY • LINCOLNSHIRE • PE23 5JL

Tel: 01790 752548



Scar Tissue Therapy

Scar care following trauma, surgery and burns where symptoms such as pain, tightness, itching and movement restriction affect personal wellbeing and lifestyle.

Hypertrophic and keloid scar treatment. Practical guidance for self-care and professional hands on techniques to provide positive outcomes for clients with scarring.



Sports and Remedial Soft Tissue Therapy



Oncology Massage

A complimentary therapy aimed at supporting cancer patients, during or post treatment. Helping to reduce symptoms experienced as a result of cancer and the symptoms associated with the medical treatments prescribed. Qualified and knowledgeable therapist. In no way does this therapy offer treatment or cure for cancer.

Sports and Remedial massage aims to assess, treat and rehabilitate minor and chronic musculoskeletal pain and injury using evidence informed, person-centred care. Treatments combine hands on massage and manual soft tissue techniques, education, movement/exercise and practical recommendations for self care to get you back to what's most important to you.



07950214860



amylambley@googlemail.com







Unit 3, The Franklin Centre
21 High Street, Spilsby, PE23 5JH

The responsibilities of the different levels of Local Government.

Three Councils operate in Spilsby.

The table below lists the responsibilities of the Parish, District and County Councils.

Each Council operates separately and manages different responsibilities within the community.

		
Allotments	Bulky Waste Collections	Adult & Children Social Care
CCTV	Business Rates Collection	Birth, Deaths, Marriages/Civil Partnerships
Cemetery	Car Parks	Bus Pass
Christmas Lights	Community Safety	Children's Centre
Closed Churchyard	Conservation & Listed Buildings	Disability Support Services
Emergency Planning	Council Tax Collection	Disabled Parking (Blue Badge)
Floral Displays	Council Tax Support	Emergency Planning
Grants	Dog Warden Service	Fire & Rescue
Local Plan	Elections & Electoral Registration	Fostering & Adoption
Mayoral Engagements	Emergency Planning	Free School Meals
Play Area	Fly Tipping Removal	Heritage Sites
Remembrance Parade	Food Safety Inspections	Libraries inc Mobile Libraries
Spinney – Boston Road	Footway Lighting	Maintaining Street & Traffic Lighting
Street Furniture	Homelessness Support/Prevention	On Street Parking Enforcement
Toc H Wildlife Area	Housing Advice	Pot Holes
War Memorials	Housing Benefits	Public Health
	Infectious Disease Inspections	Road Gritting
	Licensing	Road Markings
	Litter Bins Provider	School Admissions
	Manage Council Owned Trees	School Transport (for all Schools)
	Missed Bin Collections	Trading Standards
	Nuisance - including: Odour/Smoke/Noise/Pests (not treatment)	Traffic Signs
	Public Toilets	Waste & Recycling Disposal including Household Waste Sites
	Waste Collections: Refuse/Recycling/Green	
	Removal of Illegal Encampments on Council Owned Land	
	Removing Abandoned Vehicles	
	Spilsby Market	
	Street Cleaning on Public Highways	
	Waste Enforcement	
	Wellbeing Service	
	Contact Details:	
01790 753189	01507 601111	01522 552222
townclerk@spilsbytowncouncil.gov.uk	customerservices@e-lindsey.gov.uk	customer_services@lincolnshire.gov.uk
spilsby.parish.lincolnshire.gov.uk/	www.e-lindsey.gov.uk	www.lincolnshire.gov.uk

Spilsby Christian Fellowship – Update

Since we last wrote, the fellowship has undergone a couple of quite significant changes.

You may remember in the summer we had applied for a UK SPF Grassroots grant and were looking to raise 10% match funding to enable us to improve the access and install a suspended ceiling to reduce heating costs and enable hall users to feel more comfortable. We were successful in our application, and in September the suspended ceiling was installed – it looks great, and are sure it will help keep the building warmer and reduce costs. We have also had a ramped rear access built with a new easily accessed front entrance. Internally work is ongoing to modernise the hallway and to finish the extra toilet facilities. None of this work would have been possible without the kind help of local business support, council funding, and local individuals supporting our events, donating items for us to sell and being there to encourage us on.

This work will make a massive difference to the fellowship, however the main object was to enable us to better support the local community, this is in direct line with our aim as a fellowship to share the love of God in a very real and practical way. In the past we know people have been reluctant to access our groups – as we are a church – and they don't "want God pushed on them". However please let me try to reassure you – Yes, we are a church, Yes I am a Christian, and Yes I'd love people to discover a relationship with God – but during the everyday groups, God is rarely mentioned, unless a direct question is asked. Our varied services cater for all sectors of the community, we'd love to meet you and encourage you to come and see us.



Supporting Families

SPILSBY CHRISTIAN FELLOWSHIP

Charity No.1052165

We provide a "warm space" to pop in whether you need advice, someone to talk to, a warm drink or just a bit of time out. As a general rule the fellowship is manned weekday mornings 9 til 12 noon. At other times please contact us via our facebook page or email spilsbychristianfellowship@live.co.uk.

As well as a "Community Food Bank" and a "School Uniform Bank" we may be able to help with household goods, baby items, clothing and other things which you might suddenly find yourself in need of, for a small price, or in some circumstances "gifted".

The autumn/Christmas is usually the busiest time of year for us and as well as our regular face to face groups, which you can find out about on our facebook page, We had our Light Party on the 31 October and Christmas Sale on 16 November. Our Christmas Family Crafts will take place on Saturday 7 December and our Family Nativity Service is on Sunday 22 December.

At Christmas we support local families and individuals with our "Children's Hospital Pyjama" and "Stocking" Appeals, which although changing this year, are soon to be launched – if you would like to help with donations towards these we'd love to hear from you.

If you would like to speak to us, volunteer with us or receive any more information – please do pop in and see us or send us a message, we will get back to you as soon as we can.

SPILSBY TOWN EVENTS PRESENTS

SPILSBY XMAS EXTRAVAGANZA



Saturday 7th December

Town centre 11am to 5pm

Christmas Market

Stalls, Street Performers, Community Stage, Live Music, Santa's grotto at 'All Wrapped Up'

Light switch on at 5pm with SANTA and live band



Franklin Hall 10am to 3pm

Spilsby Rotary's 'Cracker Day'

Spilsby Christian Fellowship 10am to 3pm

Christmas Cracker Crafts



SPILSBY TOWN EVENTS



Served by One Team

South & East Lincolnshire Councils Partnership



Supported using public funding by
**ARTS COUNCIL
ENGLAND**



The Hounds of Love...

I still remember Jules's face when she looked at me, when we met the dogs outside our hotel in Cappadocia, a mountainous region of central Turkey (known for its spectacular scenery and stunning balloon flights that fill the sky with colour). It was that look that said 'Houston, we have a problem'.

We had been feeding the dogs for a couple of nights outside the hotel and we had fallen in love. Up to that point in our lives, we have always been battling for 'Team Cat' and we've never owned dogs. I may have even written the odd disparaging word about how cats are the supreme beings (possibly even aliens) – the master race and dogs are well, just a bit stupid. But there was just something about these two.

So, I remember Jules saying to Mustapha our lovely guide on our trip, 'You must get loads of requests from holiday makers to take home rescue dogs?'. Mustapha, paused and with wonderful timing said, 'I've been doing this job for 30 years and it hasn't happened once!'

So, the plan was on. Mustapha said that if we could get the dogs into a shelter, he could help with a driver. Fast forward a week or so and the dogs had made the 1,000km journey to a dog shelter in the south of Turkey. Next, there were all the health checks, jabs and paperwork required to prepare them for the journey.



Then the long trip to the UK began. After travelling through 11 different countries, clocking up 2,500 miles and dropping off all of their furry friends around the UK, only Cappa and Docia were left on the van.

It had been six months to the day since we'd clapped eyes on Cappa and Docia. I remember clearly Jules looking into Cappa's gorgeous eyes and saying "We will never ever let you both down and you will come and live in your forever home with us".

Cappa immediately threw herself on her back and had her tummy tickled by Jules. They say a dog never forgets an act of kindness and this proved it.

We'd delivered on Jules's promise and now the fun could begin.....





If you would like to meet new people and become involved in interesting activities, why not come along to see what the u3a is about.

Spilsby u3a meets in the Franklin Hall on the second Wednesday of each month 2-4pm. You can find out what is on offer and listen to an interesting speaker for free for your first 2 visits and, if you wish to become a member and join groups it is only £15 until April.

Why not visit our website www.spilsbyu3a.co.uk



Spilsby and Hundleby Walkers are Welcome exists to encourage people, both visitors and residents, to explore our local footpaths and countryside. We lead monthly walks in the local area, usually ranging from 4 to 8 miles, and you do not need to be a 'member' to take part. Our walks are publicised on our website www.spilsbyandhundlebywalkersarewelcome.com and on our facebook page. Our next walk will be a 4 mile circular walk on Friday 10 January 2025 starting at 10am at the Hundleby Parish Rooms. All are welcome but please wear stout shoes or boots and dress appropriately for the weather. We also undertake regular Litter Picks along some of the local footpaths, and report problems to the Footpaths Officer, all with a view to making our local rights of way welcoming and accessible. For more information please contact stef.round@gmail.com.

HOW IS THE TOWN'S FIRE STATION AND CREW PERFORMING?

The crew have had a busy few months with them attending 133 calls in the last 7 months! With 9 incidents being a 4 appliances or higher, what we would call a medium sized incident. Particular incidents of note was the recent one at Bottons in Skegness and building fires at Moulton Marsh and Chapel St. Leonards. They have even participated in a multi-agency exercise with the EA in Mablethorpe.

So how many incidents has the crew attended between February 2024 and August 2024?

They responded to the following number of call outs

February – 17 calls	March – 14 calls	April – 21 calls	May – 14 calls
June – 20 calls	July – 24 calls	August – 23 calls	

Important Fire Safety considerations as we enter the new year.

With the colder weather approaching, please don't forget to get your chimney swept and your electric blanket checked for any damage.

Do you know a Sherman? If you know anyone in the following groups, please encourage them to refer into Lincolnshire Fire & Rescue for a free Safe & Well check by calling the number below:

Smoker, Hoarder, Elderly, Reduced mobility, Mental health issues, Alcohol or drug dependant or needing care or support.

Product recall information

Please check out the Government website for product recalls, especially as we approach the Christmas period where you could be buying gifts from Temu or Amazon.

Product Recalls and Alerts - GOV.UK (www.gov.uk)



If you have any fire safety concerns in your home please contact the team on 01522 843415

If you want to join the crew at Spilsby please ring the recruitment line on 0800 3580 204



www.facebook.com/spilsbyfire



[@spilsbyfire](https://twitter.com/spilsbyfire)

Product safety if you have or are considering buying an e-bike or e-scooter.

If you own an e-bike or e-scooter or are thinking of purchasing one for yourself or someone else, please take note of this important Safety Message from the UK's national product regulator, the Office for Product Safety and Standards. (OPSS) e-bikes and e-scooters use large lithium-ion batteries which can present a risk of serious fire or explosion in certain circumstances. While these can be used safely, there have been a number of fire incidents involving lithium-ion batteries in e-bikes and e-scooters, including conversion kits.

OPSS recommends you follow these five steps when purchasing, using or charging your e-bike or e-scooter to reduce fire risks:

- Step1: **RESEARCH** – only BUY an e-bike, e-scooter, charger or battery from a known seller and check any product reviews.
- Step2: **READ** – always READ and FOLLOW the manufacturer's instructions for charging and using e-bikes or e-scooters.
- Step3: **CHECK** – not all e-bikes or e-scooter batteries and chargers are compatible or safe when used together. Check and only USE the manufacturer's recommended battery or charger.
- Step 4: **CHARGE** – always charge in a safe place without blocking exits and always UNPLUG your charger when you have finished charging.
- Step 5: **NEVER** – attempt to modify or tamper with your battery.

Graham Russell, Chief Executive of OPSS said,

As the popularity of e-bikes and e-scooters increases we have seen more tragic fires in homes where e-bikes or e-scooters are charging. We are stepping up our actions to tackle the sale of unsafe e-bike and e-scooters but it's important to remember that manufacturers only assure their e-bikes and e-scooters are safe when used in line with their instructions. I would urge consumers to follow these five steps to reduce risks to their families and homes."



Spilsby Motor

Spares

Rey
Sp
PE
0179
spilsbymoto

Celebratin

Visit our Autostore

Mon - Fri

8:30am - 5:30pm

Here to supply a



Serving Spilsby and surro

arnard St
Spilsby
LN23 5JB
0754669
spares.co.uk

2004-2024

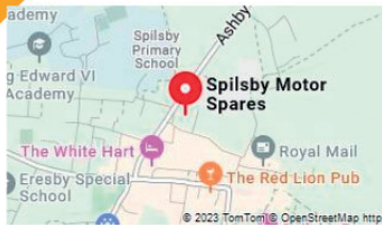


g 20 Years

all your motoring needs

Special
Offers
throughout
November

Find us here



The Team



ounding areas for 20 years

SPILSBY TWINNING ASSOCIATION

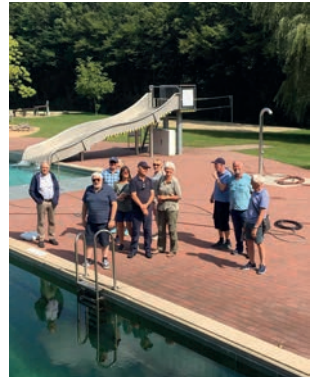
Spilsby is currently twinned with Fresnay-Sur-Sarthe in France and Bassum in Germany.

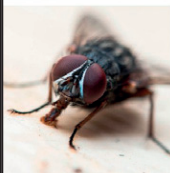
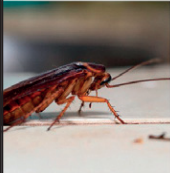
Over the August Bank Holiday Weekend a group of 10 'Twinners' visited their German Friends in Bassum. Highlights of the weekend included a visit to the Museum in Syke, a Gospel Concert in Bassum Church and a very interesting visit to the Glass Blowing Museum in Gernheim. Some also got a chance to embrace the great outdoors by going for a swim in the new Naturbad Bassum outdoor fresh water swimming pool, Brrrrr!!

It was a great weekend, and we look forward to seeing them all next year, when they come to Spilsby.

On 25 January 2025, Spilsby Twinning Association will be holding their second Music Concert in conjunction with Bluestones Big Band to raise funds for hosting our German visitors next year. The Concert is taking place at the Franklin Hall, Spilsby and tickets are £10.00. There will be no refreshments provided so it's an ideal opportunity to bring drinks and snacks of your own choice. Tickets will be available soon.

If you are interested in joining the Spilsby Twinning Committee, be a host when our German friends from Bassum visit Spilsby in 2025 or wish to travel to Fresnay-Sur-Sarthe for a chance to enjoy French hospitality in May 2025, then please contact our Chairman, Shawn Thomas by email: sthomas001@btinternet.com.





Pest Detective

PEST CONTROL & MANAGEMENT

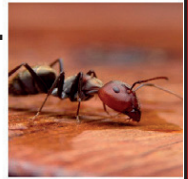
We can offer you a full range of services to cater for all your Domestic, Agricultural and Commercial needs.

CALL 07707 727770

andy@pest-detective.com

www.pest-detective.com

Pest Control and Management across the Lincolnshire Wolds from Lincoln to our fantastic Coastline.



Telephone
01790 378739

MARSTON WINDOW SYSTEMS

Email:
info@marstonwindowssystems.co.uk

MARSTON
WINDOW SYSTEMS
01790 378739

Windows - Doors - Conservatories
Secondary Glazing - Sealed Units

30

MARSTON
WINDOW SYSTEMS
01790 378739

Caravan Windows, Fascias - Soffits
Guttering - Carports - Repairs

SPILSBY SESSIONS HOUSE UPD

The Building Project

Readers who have been out and about in Spilsby town centre in recent weeks will have noticed some action (“at long last,” some will say) at the Sessions House. The Project is now in the Design Development phase, which brings together and relies on the co-operation of architects, structural engineers, heritage consultants and construction contractors. Before construction work on site can begin, it was necessary, in partnership with Messenger, a company based in Lincolnshire which specialises in the conservation and repair of historic buildings, to conduct a series of essential detailed surveys. These included: bat survey by JBA Consulting, which confirmed no roosting bats; acoustic testing by Apex Acoustics, to measure the level of noise break out through the building; and a drone survey by Messenger Construction to examine those hard-to-reach areas of the roof and determine the overall condition of the building. In addition, indoor “birdcage” scaffolding has been installed in the main hall, allowing contractors close access to the ceiling, roof void and windows, enabling further crucial investigative work. Hoardings around the site are expected to be erected shortly and the buildings remain accessible to contractors only.



Meanwhile, the design team has worked with the architects, in consultation with SSH trustees, to refine the details in the planned design and a Planning Application will be submitted to ELDC later this year.

The Spilsby Sessions House Project is part of the Lincolnshire Wolds Culture and Heritage Programme, which also includes Alford Manor House and Alford Windmill. Further information and updates on the project can be found on the Connected Coast website: <https://connectedcoast.co.uk/culture-heritage-programme/>

SHARE

The designs for the Sessions House include a simple renovation of the three police cells in order for the area to be repurposed as a heritage facility open to the public. In connection with this, earlier this year saw the launch of SHARE (Sessions House Archive Research), a volunteer project which aims to discover, through archival research, the stories of some of the people who spent time in the cells or experienced the meting out of justice in the court room. We are also asking members of the local public to search



DATE

their own memories and tell us any interesting memories, stories or short anecdotes about the old police station or “Spilsby Theatre.” If you have anything to share, please contact the SHARe team via friends@thesessionshouse.org.uk (subject SHARe); you are invited to send your memories directly in the email or by attachment; alternatively, if you would like a volunteer to visit and interview you, please request this. The stories we collect will become part of a new archive for the Sessions House and be used to enhance the heritage experience for visitors to the Sessions House. Look out for the SHARe volunteers and information at forthcoming local events. This year so far we have met many interested and interesting people at Spilsby Heritage Day in Franklin hall and at Spilsby show.

SessionsArts

SessionsArts is an all year round programme of events, community engagement and creative development, delivered by The Sessions House and partners.

SessionsArts is gearing up for the Christmas and winter season and will be supporting events in East Lindsey market towns, including Spilsby's Xmas Extravaganza on Saturday 7th December and the return of Spilsby Light Night. Spilsby

Light Night will be taking place slightly earlier in the year than usual, on Saturday 8th February, so please do save the date!

“All Rise”, the SessionsArts professional development programme, will be doing research and development of a new touring show throughout autumn/winter, working in partnership with local circus artists Creative Heights. We aim to showcase this work at summer events in 2025.

This is all possible thanks to central government funding from the UK Shared Prosperity Fund and the recent award of an Arts Council England National Lottery Project Grant that will enable the SessionsArts programme to continue through to September 2025.

In addition, the SessionsArts team has been commissioned to produce “LightWaves,” a light night event took place in Sutton-on-Sea on Saturday 26th October 2024. This event was part of the South & East Lincolnshire Council Partnership's NPO programme, funded by Arts Council England, which looks to support arts, culture, heritage and creativity across the whole of South and East Lincolnshire, providing meaningful opportunity and programming for residents, developing the sector and helping to build our arts, culture and heritage offer.





ROTARY CLUB OF SPILSBY

Spilsby Rotary Club has moved into a new Presidential year after Neil Blanchard handed over the chain of office to Rodney Hobson. As usual a variety of speakers have been booked for the Rotary year that runs from July to June.

First up was popular local fireman Lee Marsh who now has a wider brief within the county's Fire and Rescue Service. Then Rotarians heard about life at the BBC from Hull-based Clare Crooks, who was born and brought up in Hagworthingham where her father still lives. She was accompanied by a colleague from Radio Lincolnshire.



Linda Crosskill from Cleethorpes spoke of her work as a social worker and NSPCC official working with deprived children, including those who have never seen a member of their family go to work. Dr Marie Hobson, the President's daughter, travelled from London where she has worked at major museums and is currently a senior manager at the Victoria and Albert Museum. She had some useful tips for an exhibition space at the Sessions House, Spilsby's theatre which is currently being restored.

Meetings are not all serious stuff. New member Bill Wallace organized a session of the popular TV game show *Call My Bluff* while visits have included stock car racing and tenpin bowling at Skegness. Guests from Alford and Mablethorpe and Skegness Rotary Clubs joined us for a games evening that also provided an opportunity for old friends to meet up again. We finished with a game show style quiz.

Halloween fell this year on a Thursday, the night that meetings are held at the Nelson Butt, and members were invited to scare each other silly with tales of ghosts and ghoulies, real or imagined.

Spilsby Rotary once again organised Fireworks Night on November 5th after last year's disappointment when the event had to be cancelled because of heavy rainfall. Also on the calendar as usual is hosting Cracker Day stalls in the Franklin Hall and the annual Carol Service in St James's Church. Local schools are being asked to provide choirs for both events.

The club will once again be assisting Spilsby Town council in the provision of a Christmas tree near the statue of Sir John Franklin, sharing the expense and erecting the tree and putting on the lights. There will be a repeat of the popular Light for a Loved One, where local residents can remember relatives and friends who are no longer with us.

Money raised is used to support worthy local causes. The final grants from last year went to help Spilsby BroPro, which provides a safe place for men to meet, socialise and talk, and towards the cost of a character-building trip to Switzerland by Spilsby Guides.

The Spilsby Rotary is always interested in recruiting new members. Potential recruits should look at the website spilsbyrotary.org and click on the contact button or email President Rodney Hobson at rodhobson@hotmail.com.





Looking at care options for a loved one can be an emotional, exhausting, and daunting decision.

At Eresby Hall in Spilsby, we get it, and we're here to help.

Our caring team takes the time to get to know each resident and their loved ones to ensure the care, support and experience we provide is specific to them.

We offer:



**Residential
Care**



**Dementia
Care**



**Respite
Care**



**Day
Care**

Want to find out more?

Call **01790 720 073**

Visit osjct.co.uk/eresbyhall

Facebook/[OSJCTLincs](https://www.facebook.com/OSJCTLincs)

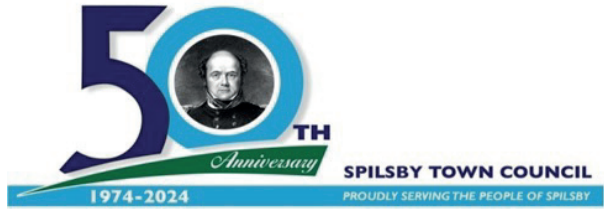
Where to find us:

Eresby Hall

Ancaster Avenue

Spilsby PE23 5HT

TOWN CLERK'S UPDATE



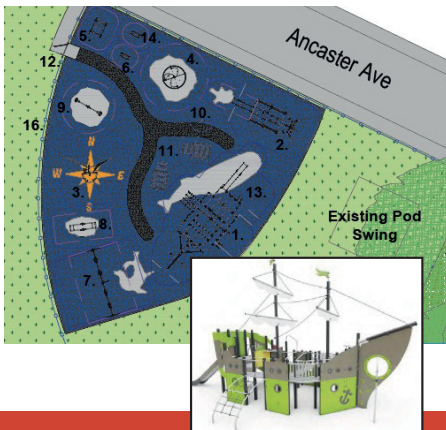
Hello,

Town Clerk's Update

So far this year, Spilsby Town Council have faced some unusual challenges, although that seems to be the nature of local government! New challenges are part of what makes local government interesting. I hope the Town Council can continue making progress and championing Spilsby.

PLAY AREA

The Town Council are making progress with the installation of a new play area at the Recreation Ground on Ancaster Avenue. The contractors will be breaking ground on phase 1 of the project this year! Phase 1 will include the installation of the statement piece - a large ship, new swings and new surfacing! The plans will be available to view at the Town Clerk's office or on our website. Please contact me if you have any ideas on additions to the play area in the next phase of the project.



COMMUNITY SPEEDWATCH

The speed watch team do a great job in contributing to keeping our roads safe. We are always looking for new volunteers to join the group. If you would like to participate, please contact me. We hope to work with neighbouring Councils in the near future on a joint Speedwatch group.

COUNCILLOR VACANCIES

Your Council needs you! There are currently three vacant seats on the Council. If you would like to join us and help make a difference in your community by becoming a Town Councillor, please contact me for more information and an application form.

WARM SPACES

A list is provided in this edition of the Spilsby Explorer of available warm spaces in Spilsby. The Town Council will keep this under review and consider filling the gaps should they arise.

ALLOTMENT GARDENS

The Town Council manage 39 allotment gardens, on Hundleby Road. There are currently limited plots available to residents within a 5-mile radius of Spilsby, varying in size. Please contact me if you are interested in any of the vacant allotments.



Now would be a great time to take on a plot in preparation for the Spring!

Best wishes,

Jack

Town Clerk
townclerk@spilsbytowncouncil.gov.uk
01790 753189



In Spilsby and across East Lindsey, there are Warm Spaces - venues where people can gather for free in a safe, friendly place to enjoy a drink and some company. The network of Warm Spaces is made up of libraries, community centres, church halls, sports clubs and other places. Warm Spaces are totally free to use and are open to everyone.

Search the directory to find your nearest Warm Space:

<https://www.warmwelcome.uk/find-a-space>

Please see list below for Warm Spaces currently available in Spilsby. This may be subject to change during the Winter. Spilsby Town Council will keep an updated list on our Notice Boards and our Website.

Franklin Hall, Halton Road, Spilsby events diary is online (fees may apply).

Spilsby Library, Co-Op, Post Office Lane, Spilsby

Spilsby Christian Fellowship, Halton Road, Spilsby

New Life Centre, Church Street, Spilsby

Spilsby Methodist Church, Halton Road, Spilsby

There are of course Cafes and Pubs in the Town as well.

Monday

Spilsby Christian Fellowship 'Come & Play Toddler Session' (10am-11.30am)

Spilsby Methodist Church Coffee Morning

New Life Centre 12pm-3pm Spilsby Community Library, Co-op, Post office Lane (9am-5pm)

Tuesday

Spilsby Christian Fellowship 'Baby Group (for Parents/Carers with Newborn Children to Under 1)' (10am-11.30am)

New Life Centre 1pm-3pm and 7pm-9pm (Women Only) Spilsby Community Library, Co-op, Post office Lane (9am-5pm)

Wednesday

Spilsby Christian Fellowship 'Come & Play Toddler Session'(10am-11.30am)

New Life Centre 7.30am-5pm Spilsby Community Library, Co-op, Post office Lane (9am-5pm)

Thursday

Spilsby Christian Fellowship 'Coffee Morning/Coffee N Chat' (10am-11.30am)

New Life Centre 7pm-9pm (Men Only) Spilsby Community Library, Co-op, Post office Lane (9am-5pm)

Friday

New Life Centre 12pm-3pm

Saturday

Spilsby Community Library, Co-op, Post office Lane (9am-5pm)



VFitness

MORE THAN JUST A GYM

JOIN US NOW



SIGN UP NOW 1/2 PRICE

YOUR LOCAL

GYM



01790 751200



www.vfitness.co.uk



Vale Road, Spilsby



[vfitness.stronger](https://www.facebook.com/vfitnessstronger)



CLASSES

Mondays

7PM H.I.I.T

Tuesdays

9:30AM STEP&TONE

6PM BOXERCISE

7PM YOGA

Wednesdays

6PM PURE PUMP

7PM DISCO SPIN

Thursdays

9:30AM LEGS BUMS &

TUMS

Fridays

5:30PM BOOTCAMP

6:30PM SPIN'SANITY

Saturdays

9AM CIRCUITS

BOOK NOW ON OUR
WEBSITE OR APP

OUR SERVICES

- Fitness + Dance Classes
- Friendly Gym
- Personal Training
- Great Equipment
- Tanning Beds
- Weight loss specialists
- Junior Memberships



Anniversary

SPILSBY TOWN COUNCIL

1974-2024

PROUDLY SERVING THE PEOPLE OF SPILSBY

Advertise in the Spilsby Explorer Magazine

GET YOUR BUSINESS NOTICED

This is a great opportunity to advertise and promote your business in the local community by advertising in the Spilsby Explorer magazine, issued by Spilsby Town Council.

1500 copies are delivered to every household and businesses in Spilsby.

£45.00 for a full page per issue

£25.00 for half page per issue

£15.00 per quarter page per issue

Discounts available for advertising for a full year.

To request a space in future issues please contact:

townclerk@spilsbytowncouncil.gov.uk

01790 753189

St James' Church, Spilsby



Christmas Tree and Angel Festival – Shops and businesses are once again contributing to our Christmas Tree Festival in St James Church, Spilsby. In addition, we are holding an Angel Festival whereby all of the primary school children in the area are going to decorate angels which will be hung in the church. Furthermore, there is going to be an Angel quiz for the duration of December with the quiz questions being displayed in the shop windows in Spilsby. Answer sheets will be available at the back of St James Church, with a box for completed quiz sheets. Completed answer sheets need to be returned to the church by Sunday 22 December with the winner being announced at the Christingle with Pop-up Nativity on 24 December at 3.00 pm.

Blue Christmas Service – Wednesday 18 December 6.30 pm, St James Church, Spilsby - Perhaps you have had a tough year, or have lost a loved one and you don't feel like celebrating Christmas as you have done previously. Then our Blue Christmas Service is for you. This service is a time when we can, with others, acknowledge the "blue" feelings we have at Christmas time, the reasons for them, and offer them to God.

Christingle with Pop-up Nativity – Christmas Eve (24 December) 3.00 pm, St James Church, Spilsby – Together with the usual Christingles,

this year we are going to do a Pop-Up Nativity. We are inviting the children to come dressed up as a nativity character and the service will be interactive with the children being the characters. Do come along with the whole family and enjoy the fun!

A number of people have been asking about the Church Clock – why isn't it working? That is a really good question! With the support of the community we raised over £10,000 against an initial estimate of £8000. Unfortunately, the initial estimate proved to be on the low side, with the costs seeming to escalate every time the contractors went into the Tower. So far we have paid out over £14000, and we cannot afford to keep going without results. We have been let down by the approved contractors – it appears that some work has not been done to the correct standard, and some has not been done at all.

We are being advised by another clock expert, who is going to help us get the project back on track, and, hopefully, recoup some of the monies spent. We will also be encouraging the Diocese to take the original contractors off their approved list.

It is very much a case of 'Watch this Space'. We do intend to get it going as soon as we can.

SPILSBY GOOD NEIGHBOURS

COFFEE MORNING

Friday 6th December 10am – 12pm

Franklin Hall, Halton Road, Spilsby

Coffee, Tea, Cakes and Biscuits • Raffle Prizes

Free Entry and All Welcome

Christmas by Candlelight



Friday 6th December 2024 from
7-9pm

St James Church

Starring Alford Silver Band and Halton Hologate
Primary School choir.

In memory of Gary Cole

Retiring collection



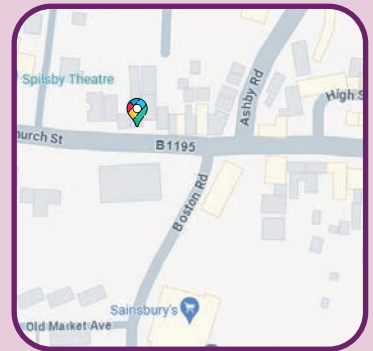
Spilsby Wellbeing Hub New Life Centre, Church Street

Our Wellbeing Hubs provide a safe and supportive space for those experiencing mental health and wellbeing challenges.

We can signpost you to other services in the local area, help you build social networks and develop the knowledge and skills to manage your mental health and improve your wellbeing.

**Spilsby Wellbeing Hub, New Life Centre,
Church Street, Spilsby, Lincs, PE23 5DU**

Suzy Pearl (Spilsby & District Community Connector)
suzy.pearl@nhs.net, 07901211220



Need urgent help now? Call 111 select mental health option In a life-threatening emergency call 999
General support Mental Health Helpline (over 18): 0800 001 4331 (24/7) Here4You Advice Line (children and young people): 0800 234 6342 (24/7) Lincolnshire Talking Therapies: www.lincolnshiretalkingtherapies.nhs.uk Night Light Cafes: 0300 011 1200
Looking after yourself HAY Lincolnshire website: haylincolnshire.co.uk Every Mind Matters website: nhs.uk/every-mind-matters Lincolnshire Recovery College: lpft.nhs.uk/recovery-college



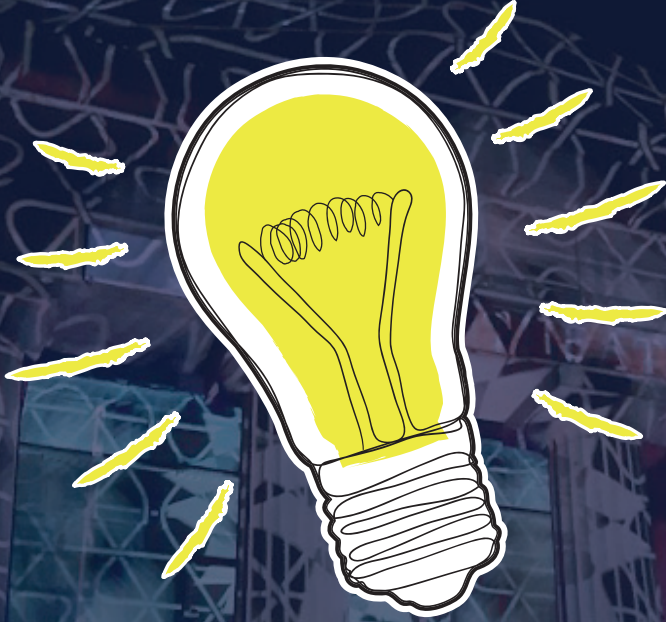
For more information

Call or WhatsApp our Community Connector. You can also find updates on our social media too.

H.A.Y. helping people find local resources for mental health and wellbeing. www.haylincolnshire.co.uk



SAVE THE DATE



SPILSBY LIGHT NIGHT

Saturday 8th February 2025

Produced by



Supported using public funding by
**ARTS COUNCIL
ENGLAND**

served by One Team

South & East Lincolnshire Councils Partnership



HM Government



St Barnabas

Hospice • Care • Support

Did you know... Since the creation of St Barnabas hospice over four decades ago, more than 100,000 people have received free, high-quality, compassionate end-of-life care and support across Lincolnshire.

Rudy is returning for Christmas 2024

If you are looking for a way to have some festive fun whilst making a difference to those in your local community this Christmas, why not support your local Hospice by taking part in Rudy's Run. This event is perfect for primary schools, sports groups and community groups.

Rudy's Run is a very special Festive Fundraiser brought to you by St Barnabas; you can pick a date of your choice and the children can run, dance or prance as they take part in their very own Rudy's Run whilst raising vital funds for Hospice care in Lincolnshire.



It's FREE to sign up and we will provide everything you need to take part: Rudy's antlers for each child, letters to send to parents, a guide to set up Just Giving, and a digital activity pack with games, recipes, crafts and more... This year our activity pack is better than ever, filled with fun festive crafts for all the children and a PSHE lesson all about St Barnabas.

We know that Christmas is a busy time, which is why we are letting you know about this exciting opportunity now and why we have made Rudy's Run as hassle free as possible. Participation is completely free of charge. All we ask is that each child tries to raise £3 in sponsorship money to support the work of our Hospice.

Simply sign up through the link below and we'll do the rest. 'We' means Rudy, as all packages will be delivered by himself personally! All the Elves at St Barnabas Hospice will be working hard to support you with your Rudy's Run, so please don't hesitate to get in touch at fundraising@stbarnabashospice.co.uk or 01522 540300.

Pub Quiz

St Barnabas is looking for Lincolnshire pubs and social clubs to sign up and host a Pub Quiz in support of the Hospice. Signing up is free and includes a Pub Quiz pack to make hosting the quiz stress free and easy! If you are interested, then please visit <https://stbarnabashospice.co.uk/pubquiz/>



SPILSBY GRAMMAR SCHOOL FOUNDATION

**CURRENTLY HAS FUNDS AVAILABLE TO ASSIST
FORMER PUPILS OF**

KING EDWARD VI ACADEMY

(formerly KING EDWARD VI HUMANITIES COLLEGE and
KING EDWARD VI SCHOOL, SPILSBY)

**with their exceptional costs if they are presently in
further/higher education or training and are over 18 and
under 25 years of age on 31st December 2024.**

Applications from former pupils of Spilsby, Great Steeping,
Halton Holegate, Partney & Toynton Primary schools who went
elsewhere for secondary education will also be considered.

**To see further details and to download a copy of the
Criteria and Application Form go to**

www.spilsbygsf.org.uk

**APPLICATIONS must be received by
12 noon on Monday 27th January 2025**



FRANKLIN HALL - SPILSBY

A COMMUNITY HALL (REGISTERED CHARITY), THE PERFECT PLACE TO HOST SOCIAL AND BUSINESS EVENTS IN THE HEART OF SPILSBY

MAIN HALL

FOR LARGER FUNCTIONS AND ACTIVITIES UP TO 300 PEOPLE.
IDEAL FOR COMMUNITY, CHARITY AND COMMERCIAL EVENTS, CLUBS, CLASSES,
SPORTS, WEDDING RECEPTIONS AND PARTIES ETC LARGER MEETINGS,
PULL DOWN SCREEN, STAGE AND MICROPHONES AVAILABLE

CONFERENCE ROOM

OFFERS A MEETING ROOM/SMALLER FUNCTION ROOM FOR UP TO 50 PEOPLE.
PULL DOWN SCREEN AND FREE WIFI OFFERING A FRIENDLY AND
PROFESSIONAL ENVIRONMENT.

KITCHEN/BAR AND LOUNGE

IDEAL SOCIABLE SPACE TO LINK TO THE ABOVE ROOMS AND ALSO IDEAL FOR
SMALLER DINING EVENTS (E.G. COFFEE MORNINGS, LUNCH GROUPS).

Hall Manager's Office generally open Tuesdays 11.15am to 2.15pm
and Thursdays 9.30 to 12.30.

Tel 01790 752913

Email: spilsbyfranklinhall@outlook.com

Photos and online events diary are available by visiting: spilsby.info/franklinhall