

SPILSBY EXPLORER

SPRING 2025



Photograph by John Wood – Spilsby Resident.



SPILSBY TOWN COUNCIL

CONTENTS

3. MAYOR'S MESSAGE / SPILSBY TOWN COUNCIL MEETING DATES 2025/2026
4. NEWTON FALLOWELL
5. ELDC CLLR ELLIE MARSH / ELDC SPILSBY MARKET
6. EASTER SUPER SATURDAY
7. SPILSBY CHRISTIAN FELLOWSHIP
8. E J TONG & SONS SUPER SATURDAY
10. MARSTON WINDOWS / PEST DETECTIVE
11. SPILSBY FIRE SERVICE
12. HAY LINCOLNSHIRE / U3A
13. ROYAL BRITISH LEGION
14. SPILSBY TOWN COUNCIL RECOGNITION AWARDS EVENT 2025
15. AMY LAMBLEY
16. SPILSBY MOTOR SPARES
- 17. SPILSBY TOWN COUNCIL CONSULTATION (PULL OUT SECTION)**
22. SPILSBY LIBRARY / ADVERTISE IN THE SPILSBY EXPLORER
24. V FITNESS
25. WELLBEING HUB
26. SPILSBY ROTARY
28. LINCOLNSHIRE WILDLIFE TRUST / CLARITY HOMECARE
29. HALTON HOLEGATE PRIMARY SCHOOL
30. SPILSBY SESSIONS HOUSE
32. SPILSBY SCOUTS
33. SPILSBY RAINBOWS
34. SPILSBY TOWN EVENTS SPRING WALK
35. SPILSBY TOWN EVENTS CHOCOLATE BINGO
36. FRANKLIN HALL

We would very much welcome any suggestions for future editions of the 'Spilsby Explorer'. Please share any news article. Most importantly please just get in touch, we would really love to hear from you.

The next edition will be published in August 2025.

If you would like to contribute please contact Spilsby Town Council.

Email: deputytownclerk@spilsbytowncouncil.gov.uk

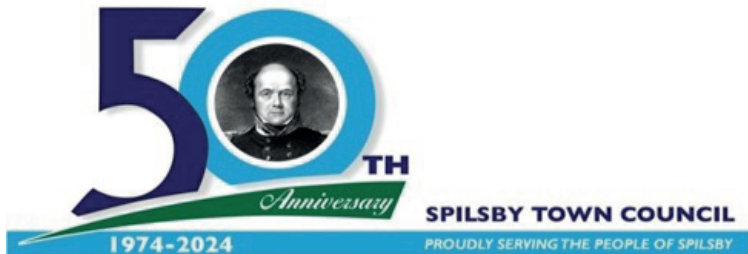
MAYOR'S MESSAGE

This has been a quite time for me as Mayor.

I attended a number of Christmas Events at the Spilsby Christian Fellowship, and the Rotary's Christmas Cracker event at the Franklin Hall. I also popped into the New Life Centre and met some of the Volunteers. I was really pleased to meet the Reindeer and have a photo with them at the Franklin Hall. The Ladies on stilts were also amazing.

I will attend the Music Festival in March and am proud to do this on behalf of the Town.

Liz Day
Mayor of Spilsby



DATES OF MEETINGS 2025 - 2026

All meetings to start at 6:00pm unless stated otherwise

FULL COUNCIL MEETINGS

Wednesday 23 April 2025

Wednesday 14 May 2025 - Annual Town Meeting

Wednesday 28 May 2025 - Annual Meeting of the Council

Wednesday 25 June 2025

Wednesday 23 July 2025

August Recess

Wednesday 24 September 2025

Wednesday 22 October 2025

Wednesday 26 November 2025

December Recess

Wednesday 28 January 2026

Wednesday 25 February 2026

Wednesday 25 March 2026

It's the start
of something
special.



It's that **Newton Fallowell feeling.**

We're an estate agency that puts people at the heart of property. Landlords, buyers, renters, vendors... they'll all say similar things. That we know the Midlands like no-one else. That we care more about service. And that while others go through the motions, we'll go the extra mile for every single customer.

Pop in, call **01790 755222**
or search **Newton Fallowell**

 **NEWTON
FALLOWELL**

ELDC Councillor Ellie Marsh

At last, Spring is finally here, Winter seemed to go on forever. Spring always seems to bring with it positivity and hope. Beautiful flowers emerge, days are longer and the sun seems to shine brighter.

We've got a busy year ahead with lots of wonderful events planned in Spilsby. We've got the new monthly Market that starts on Saturday April 5th. There are also lots of activities planned for Easter including a Spring Walk, Easter Bingo and a Easter Hunt on Easter Weekend.

ELDC have also relaunched the Monday market and hopefully everyone can support it. Spilsby's market dates back to 1302, that's over 700 years of history we need to keep supporting. Please keep an eye on Facebook and in the shops around town for all the information on Events.

Next time you're out for a walk in the lovely Spring sunshine take a look at what is happening in Spilsby. Works have started on Spilsby Sessions House, we have the new play equipment at the park and hopefully work can start soon on the all weather pitch at the Recreation Ground.

I have a new pot of Councillor Grant money available for local groups to apply for. Last year I was able to help 1st Spilsby Guides, Spilsby Scouting Association, Spilsby Recreation Ground, Franklin Hall and Spilsby Fire Station. Please email me Ellie.marsh@e-lindsey.gov.uk to apply.



ATTENTION ALL TRADERS SPILSBY MARKET FEES, HALF PRICE FROM MARCH!

As from 3rd March 2025, East Lindsey District Council are offering pitches for **£7.50** for new & regular traders, and **£9.00** for casual traders.

As well as this fantastic offer, Spilsby Town Council are offering a further 50% contribution to local traders towards their fees for up to 12 weeks, subject to application.

This means, local traders could secure a pitch for as little as **£3.75!**

SPILSBY MARKET - EVERY MONDAY FROM 9AM

TO BOOK YOUR SPACE, SCAN THE BARCODE

or visit East Lindsey District Councils website, search for 'booking a market stall'.



East Lindsey
DISTRICT COUNCIL

Spilsby Town Council

presents

EASTER

Super Saturday

Join us on

Saturday 5th April

10am - 4pm

for some free egg-citing fun!

Market Place, Spilsby

Free Facepainting

Eggciting stalls

Free crafts for children

Spilsby Christian Fellowship-Update

So, to update on developments. The installation of the suspended ceiling has made a massive difference to the internal aesthetics and has brought lots of positive comments about the improved light, warmth and comfort offered. Due to a variety of factors, time and manpower being key, whilst we now have a lovely set of new doors into the main hall, we are still working on installing new toilet facilities and decorating the entrance way. Once these are complete, we hope our search to find a builder will enable us to brick up and build an apex roof onto the portacabin, to bring this back into use.

Our face-to-face groups remain an important part of our community work here in Spilsby. Since December it's been lovely to welcome lots of new faces. 'Come & Play Tots' on a Monday is especially busy. Tuesday Baby Group and Wednesday Tots are also thriving. We continue our partnership with "Lincolnshire Family Hubs" and funding has enabled us to provide a cosy breastfeeding/baby area (which doubles as comfy seating). We continue to offer antenatal support through "Mellow Bumps. All 3 trainers were the first "Accredited" trainers in Lincolnshire and we are now delivering on a rolling basis. The "Family Hubs" training allows us to include Elements of PEEP and Making it REAL (parenting support) into our weekly groups, and I will be involved in steering group meetings from March. Friday Youth Group continues to offer the towns 5 to 19yr olds social activity, "life skills" training and a safe space. "First Aid" will form part of our spring offering. Our primary section is quite full, however there are spaces at our senior section. Our Thursday Coffee Morning tends to attract the older generation, though everyone is welcome and this is now a great "warm space" to come for a cuppa, a slice of cake and the opportunity to meet new people. If you are new to Spilsby why not pop in. As a Church each Sunday morning we offer a warm welcome to young and old alike to our morning worship service. Services are modern, informal and an opportunity to discover the bible's relevance today, with of course a cuppa and cake afterwards.

Wrap around services at the church include our "Food Bank" offering food support to anyone going through a difficult time. Thanks to a grant from East Lindsey District Council – our food parcels, contain



care packages, cleaning supplies and a supermarket voucher (where available). Referrals are not required, though we do ask a few questions to enable us to comply with requirements. We also continue to offer our "School Uniform Bank" and can help support with general clothing, baby equipment and household supplies as stock allows.

As a Church, each year we offer a variety of "Fun, Family Events". We are now getting ready for our annual "EASTER TRAIL" on Easter Saturday 19th April. It is an increasingly popular event, which last year over 150 children enjoyed with their families. We are hoping once again to have some live animals on site, and to involve the local shops with an "Easter Hunt". This is an opportunity for us to give you a great family time at a subsidised price of £2 per child, but also to bring the Easter Story to you in a relevant way. On the day there will be side stalls and activities at the Fellowship and each child who completes the trail will receive a "Goody Bag" containing a chocolate egg, some craft kits and a story book.

If you would like any more information about anything you have read in this article or would like to book onto our Easter Trail, please do visit us on Facebook, pop into the Fellowship or send me a message via phone 01790 752457 or email spilsbychristianfellowship@live.co.uk



Tongs of Spilsby

Hardware & Cookshop

Hardware DIY – Cookshop

1 HIGH STREET • SPILSBY • LINCOLNSHIRE • PE23 5JL

Tel: 01790 752548

**Spilsby Town Council have embarked
on an exciting new adventure**

SPILSBY SUPER SATURDAYS

These are monthly themed events on the first
Saturday of each month 10am - 4pm.

We recognised following feedback from residents that
people wanted more fun things to do at the weekend.

There will be stalls, entertainment and free activities
for the children to take part in.

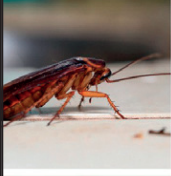
Please email Ellie.marsh@e-lindsey.gov.uk
if you would like a stall or require any more information.

SPILSBY TOWN COUNCIL PRESENTS **SPILSBY SUPER SATURDAYS**

EACH THEMED EVENT RUNS ON THE FIRST SATURDAY OF EVERY MONTH, 10AM TO 4PM IN THE MARKET PLACE STALLS, FREE CRAFTS FOR KIDS AND ENTERTAINMENT

PLEASE CONTACT ELLIE.MARSHALL@LINDSEY.GOV.UK FOR MORE INFO OR TO HAVE A STALL AT ONE OF THE SATURDAYS

APRIL 5TH	EASTER EVENT
MAY 3RD	1940S THEMED
JUNE 7TH	SUMMER SOLSTICE
JULY 5TH	STEAM PUNK
AUGUST 2ND	SPILSBY BY THE SEA
SEPTEMBER 6TH	EMERGENCY SERVICES
OCTOBER 4TH	LINCOLNSHIRE



Pest Detective

PEST CONTROL & MANAGEMENT

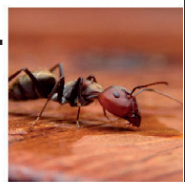
We can offer you a full range of services to cater for all your Domestic, Agricultural and Commercial needs.

CALL 07707 727770

andy@pest-detective.com

www.pest-detective.com

Pest Control and Management across the Lincolnshire Wolds from Lincoln to our fantastic Coastline.



Telephone
01790 378739

MARSTON WINDOW SYSTEMS

Email:
info@marstonwindowssystems.co.uk

MARSTON
WINDOW SYSTEMS
01790 378739

Windows - Doors - Conservatories
Secondary Glazing - Sealed Units

30

MARSTON
WINDOW SYSTEMS
01790 378739

Caravan Windows, Fascias - Soffits
Guttering - Carports - Repairs

HOW IS THE TOWN'S FIRE STATION AND CREW PERFORMING?

Once again the crew have had a busy few months with them attending 97 calls in the last 5 months! With 7 incidents being a 4 appliances or higher, what we would call a medium sized incident. They have been in Beesby, 2 in Skegness, Alford, Fishtoft, Great Carlton and Toynton all Saints.

Sadly, in December the station had to say goodbye to one of their Crew Managers, Craig Marchbank. Craig has served our community for over 26 years and I'm sure you would like to join me in thinking him for his commitment and service to the community.

So how many incidents has the crew attended between September 2024 and January 2025?

They responded to the following number of call outs

September – 24 calls	October – 22 calls	November – 17 calls
December – 15 calls	January – 19 calls	



If you know anyone in the following groups, please encourage them to refer into Lincolnshire Fire & Rescue for a free Safe & Well check by calling the number below:

Smoker, Hoarder, Elderly, Reduced mobility, Mental health issues, Alcohol or drug dependant or needing care or support.



www.facebook.com/spilsbyfire



[@spilsbyfire](https://twitter.com/spilsbyfire)

How are you, Lincolnshire?

Are you looking to boost your wellbeing and mental health? Find local groups on

haylincolnshire.co.uk



u3a learn, laugh, live

Spilsby u3a holds its main meeting in the Franklin Hall on the second Wednesday of each month 2-4pm. Members learn about forthcoming group meetings, enjoy refreshments and listen to an interesting speaker.

Here is a list of speakers for the coming few months.

April 9th Paul Lillie	The life and songs of Elvis
May 14th Jean Shaftoe	Henry Winn, Grand Old Man of Lincolnshire
June 11th Erik Grigg	The Home Guard in Lincolnshire
July 9th Nevil Wright	Lincolnshire Emergency Blood Bikes

Becoming a member entitles you to join as many groups as you like which have room for new members. See our website for our groups www.spilsbyu3a.co.uk

Some groups pay for hall use and there are entrance fees and transportation to add but otherwise all this for only £15 for the year. New subscriptions start in March/April so why not join us to make new friends and widen your horizons.



There are many ways to support the RBL

Support for our veterans is one of the Legion's main concerns. There have been 22 major conflicts involving our armed services since the end of WW2, from the well-known wars in Iraq, The Falklands and Afghanistan to Korea, Malaya, Borneo and other so-called 'police actions' such as those undertaken in Kosovo and Northern Ireland. Each of these conflicts had its casualties, many seriously wounded or killed, leaving dependents for whom we have a duty of care, partly funded by you buying poppies and by people joining the Legion to help remember the debt we all owe our armed services for keeping us safe in an ever more dangerous world.

There are many ways that you can support the RBL and those veterans in need, such as fetes and displays as in the picture above, where you can buy goods or raffle tickets. Visit the RBL's website <https://www.britishlegion.org.uk/>

get-involved/how-you-can-help where you can discover programmes that promote other ways you can help to raise funds and have a great time doing it. If you would rather stay at home but still want to help there is the weekly lottery which is just £1. You can sign up at <https://poppylottery.org.uk>

Or you could join our branch here in Spilsby. The cost of membership is a very reasonable £20 per year. Joining is easy and full details can be found on the Legion's website:- britishlegion.org.uk or phone 0800 307 7773 (it's free).

If you need further information you can also contact the Branch's Chair, Suzanne Scott, on:- spilsbydistrict.chair@rbl.community



Spilsby Recognition Award Event

Last year Spilsby Town Council held their inaugural Recognition Award Event at Franklin Hall to celebrate and congratulate those individuals / groups / organisations / businesses that have worked hard to raise the profile of the town and for the betterment of the people within the town.

Due to its great success and the fact that the recipients were immensely grateful to have been recognised by the people of Spilsby, the Town Council want to make this an annual event.

The link and QR code below is to allow you to nominate a recipient for any of the awards that are being given to worthy individuals and groups at the Spilsby Recognition Award Event being held on **Saturday 31st May at 2pm in Franklin Hall.**

Please remember, the panel will not be awarding based on the number of nominations, but by your rationale as to why the panel should consider them.

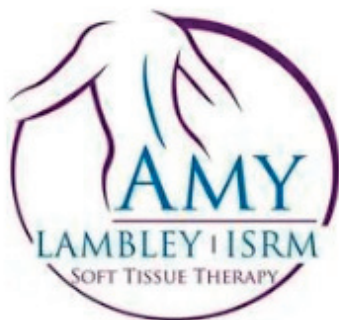
If you could consider the following when making your selection.

Has the recipient considered the improvement of facilities, environmental issues and sustainability, have they been able to bring groups/teams/organisations together for the betterment of the town, have they been able to raise funds or tap into funds to enhance their work or improve the life of others?

Completing this form should take no longer than 5 minutes. If you could have your responses submitted before Friday 2nd May.

<https://forms.office.com/e/pzsZe4ymwY>





SPORTS & REMEDIAL MASSAGE

FOR THE ASSESSMENT, TREATMENT AND REHABILITATION OF MINOR AND CHRONIC PAIN AND INJURY

ONCOLOGY MASSAGE

SUPPORTING CLIENTS THROUGHOUT AND BEYOND THEIR CANCER JOURNEY. HELPING TO RELIEVE THE SYMPTOMS OF THE DISEASE & ASSOCIATED TREATMENTS

SCAR TISSUE THERAPY

TO STIMULATE HEALING, REDUCE PAIN, RESTRICTION AND SENSITIVITY



LYMPHOEDEMA MANAGEMENT

MANUAL LYMPHATIC DRAINAGE (FG-MLD) FOR THE MANAGEMENT OF LYMPHOEDEMA AND CHRONIC OEDEMA



07950214860

UNIT 3 THE FRANKLIN CENTRE, 21 HIGH STREET, SPILSBY, PE23 5JH

Find us on 



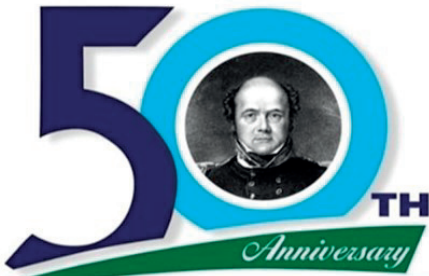
Reynard St, Sp
01790



- Tools
- Oil
- Bulbs
- Batteries
- Filters
- Spark Plugs
- Bearings
- & much more!



Why buy online when
product at a great price



SPILSBY TOWN COUNCIL

1974-2024

PROUDLY SERVING THE PEOPLE OF SPILSBY

CONSULTATION

The Town Council would like residents to share their views on a range of issues. Please respond using this page, please pull it out of the magazine and return to the Clerk's Office, Franklin Hall, Halton Road, Spilsby. You can also email your response to townclerk@spilsbytowncouncil.gov.uk or complete the survey using the QR code shown here.



It's important that we receive as much feedback as possible to help shape what we campaign for, funding we can access and how we want the town to look in the future.

Please tell us your Post Code:

1 What areas of the town need improvement?

If there are any negative areas of the town, how do these impact you? Do they affect your business? Your enjoyment in the town? Desire to visit the town?

What improvements would you like to see:

2 In the Town Centre and conservation area:

3 At the Recreation Ground. New equipment has been installed in the play area, designed for 3-12 years olds, at the recreation ground. More equipment will be going in, over the next few years. What else would you like to see in the play area :

4 With car parks:

5 With on street parking:

What improvements would you like to see:

6 Street safety - Speeding/Parking issues/Crossings/street lighting/Dog fouling:

7 Condition of roads and footpaths:

8 Elsewhere in the Town (please specify):

9 Markets/Events:

What improvements would you like to see:

10 Christmas Lights display:

11 Proposals are moving forward to build 600 new homes in Spilsby. Do you have any concerns about this development? Do you think there will be any benefits?

12 To improve accessibility, would you like to see Town Council meetings streamed online? What else could the Town Council do to improve accessibility/communications/access to Town Council information?

Please note, the deadline for submissions is 31st May 2025. If you have any questions, please contact 01790 753189 or townclerk@spilsbytowncouncil.gov.uk

PILSBY Motor Spares

Pilsby, PE23 5JB
01790 754699

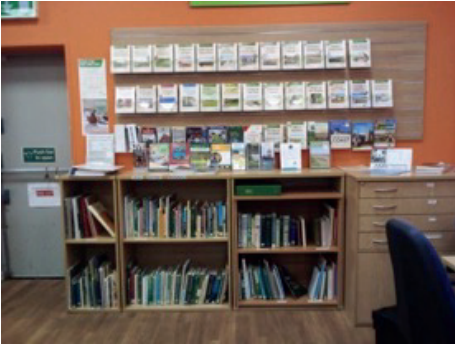
OPEN
Mon - Fri
8:30am - 5:30pm



Our friendly team
look forward to
assisting you
with all your
motoring needs!



When you can get the right
advice from local experts!



SPILSBY LIBRARY

located in the Lincolnshire Co-op Food Store, Post Office Lane
is open 9-5pm Monday to Saturday.

It is a community library, run by volunteers.

During opening hours you can borrow or return books and use the computers (you need your member number and PIN to log in). During most of the opening hours there is a volunteer on duty to assist you. When a volunteer is present you can use the computers if you are not a member and join the library.

**We also offer a printing / photocopying service
When a volunteer is on duty and for small charge.**

WHAT'S BEEN HAPPENING AT THE LIBRARY?

We have improved display units for our LOCAL INTEREST MATERIAL. This includes books and pamphlets on various local history subjects, and information about local places of interest and walks plus events in the local area (see photo above).

In addition we have a vast collection of local history archive materials - photos / articles / booklets - which can be viewed when a volunteer is present. This material cannot be taken out of the library but some can be photocopied. Much of this material is unique to Spilsby Library (including the Badley collection of photographs). If you are interested in local history please come a look at what we have.

WHAT'S NEW?

We are now part of the COMMUNITY CUPPA scheme. On Thursday mornings (10-12) you can have a hot drink and a cake - all free of charge. An opportunity to have a chat with other users and borrow or renew your books.

BOOK SALE

Our ever popular book sale will start again in April.

All proceeds go to the Coop community champion charity.

Come along and grab yourself a bargain.

WOULD YOU LIKE TO HELP RUN THE LIBRARY?

We are always looking for new volunteers to join our friendly team. If you have a few hours spare a week, why not consider volunteering at the library? You need to have basic computer skills, but full training is given on all aspects of the role, and you will be supported by other volunteers.

If you're interested, go along to the library where you can talk to any volunteer about what the role entails. Here you can also pick up an application form, and if you give your contact details to the volunteer, the volunteer coordinator will get in touch with you.



Advertise in the Spilsby Explorer Magazine

GET YOUR BUSINESS NOTICED

1500 copies are delivered to every household and businesses in Spilsby.

£45.00 for a full page per issue

£25.00 for half page / £15.00 per quarter page

Discounts available for advertising for a full year.

To request a space in future issues please contact:

townclerk@spilsbytowncouncil.gov.uk

01790 753189



EVERYTHING FRESH, SEASONAL & LOCAL UNDER ONE ROOF

Fruit, Veg, Salad
Jams, Chutneys
Eggs, Bread, Cakes
Souvenirs, Gifts, Clothing
Logs, Sticks, Coal
Flowers, plants



DELIVERY NOW AVAILABLE

THE CLUMSY GOAT
MAIN ROAD
WRANGLE, PE22 9AT
CALL- 07746 800063

NEW

BUTCHERY & DELI
THE CLUMSY KITCHEN
THE CLUMSY GOAT PET SHED

Let us help you with your Spring & Summer goals, Try a Vfitness Class or gym day pass for FREE this Spring

SPRING INTO FITNESS



V'INSANITY
FITNESS CLASS
Mondays 7.00pm

STEP & TONE
FITNESS CLASS
Tuesdays 9.30am

BOXERCISE
FITNESS CLASS
Tuesdays 6.00pm

YOGA
FITNESS CLASS
Tuesdays 7.00pm

PURE PUMP
FITNESS CLASS
Wednesdays 6.00pm

DISCO SPIN
FITNESS CLASS
Wednesdays 7.00pm

LEGS BUMS & TUMS
FITNESS CLASS
Thursdays 9:30am

CIRCUITS
FITNESS CLASS
Saturdays 9am

☎ 01790 751200
🌐 www.vfitness.co.uk
📍 Vale Road, Spilsby
📘 [vfitness.stronger](https://www.facebook.com/vfitnessstronger)

TRY FOR FREE

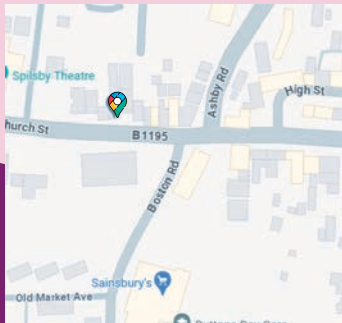


Spilsby Wellbeing Hub

New Life Centre, Church Street

Our Wellbeing Hubs provide a safe and supportive space for those experiencing mental health and wellbeing challenges.

We can signpost you to other services in the local area, help you build social networks and develop the knowledge and skills to manage your mental health and improve your wellbeing.



Suzu Pearl

(Spilsby & District Community Connector)
suzy.pearl@nhs.net, 07901211220

◀ **Spilsby Wellbeing Hub, New Life Centre,
Church Street, Spilsby, Lincs, PE23 5DU**



For more information

Call or WhatsApp our Community Connector.
You can find updates on our social media too.

FB: Spilsby & District Wellbeing Hub

H.A.Y. helping people find local resources for mental health and wellbeing. www.haylincolnshire.co.uk





ROTARY CLUB OF SPILSBY

Spilsby Rotary donated more than £2,500 to worthy causes at home and abroad during 2024 despite the cancellation of Fireworks Night in 2023 depleting funds available to distribute in the following year.

All money raised at events organised by Spilsby Rotary is paid into a Community Account and all money in that account is distributed to charities and other organisations voted for by Spilsby Rotarians. No expenses are deducted.

The largest amount was used to sponsor a young person to participate in the

Rotary Youth Leadership Awards (RYLA), an intensive leadership experience organized by Rotary clubs and districts to help those aged between 16 and 30 to develop skills as a leader while having fun and making connections. Spilsby paid for a local schoolgirl to take part in a highly rewarding week-long camp and Rotarians were delighted when she returned to talk of her experiences at a club meeting.

We sponsored the match ball for one of Spilsby Town football club's home fixtures on top of our regular financial support for Spilsby Juniors FC. We divided proceeds from the Light for a Loved One Christmas appeal equally between Spilsby Guides to support their character-building visit to a Guide camp in Switzerland and the local branch of Bro Pro UK, which creates a safe place for men to meet and talk.

As usual, Spilsby Rotary split the cost of the town's Christmas tree with Spilsby Town Council and arranged for its erection and removal. New lights were provided thanks to the generous sponsorship of Balcon Lighting in Horncastle. Many of the old lights had ceased to function and the new, brighter all-white lights were well received. The contrast with the red bulbs around the Light for a Loved One board was quite stunning.

We also gave financial support to a project to record the history of Spilsby Union Workhouse in Hundleby to inform present and future generations.

Internationally we continue to contribute to the Rotary Foundation, which is leading the fight to eradicate the scourge of polio with considerable success. We have also supported projects to feed hungry people in deprived areas of the world and to help them to feed themselves.

Money raised from the highly successful Fireworks Night in 2024, the Christmas raffle and the BeeGees tribute night in February will be allocated during 2025. Already this year we have provided much-needed equipment for Spilsby Rainbows, which provides a start of the Girl Guides pathway for 4-7 year-olds, following a visit from their new team leader to one of the regular Thursday night Rotary club meetings.

Spilsby Rotary is planning to host a session with Heartwize, a national training programme to raise awareness of cardiac arrest and provide practical training in recognising heart attacks and resuscitating those who suffer such attacks, including the use of defibrillators.

We have also invited a representative from Spilsby Karate Club to tell us about its activities and what it does for young people in the area.

The club is always open to prospective members who want to join us in serving the community. Two people have joined since the Rotary year started in July. We meet at the Nelson Butt on most Thursday evenings for a meal, often followed by a talk. If you are interested, contact the current President Rodney Hobson on rodhobson@hotmail.com or the Secretary Tracey Robson through our website www.spilsbyrotary.org



The UK Bee Gees tribute band had the audience on their feet at the Franklin Hall in February.



Lincolnshire Wildlife Trust



The Spilsby Area Group of Lincolnshire Wildlife Trust holds monthly illustrated talks on a wide variety of natural history topics, on the first Thursday of the month, from September to April. The meetings take place in the Franklin Hall and start at 7.30pm. If you are interested please just come along, there is no need to be a member of LWT. There is no charge but donations are invited for refreshments, and there is always a raffle.

Any money raised goes to support the conservation work of Lincolnshire Wildlife Trust throughout the county. Our next talk is on Thursday 3rd April, where we will be exploring the wildlife of Staffordshire and Shropshire. During the summer we hold various events such as an Open Day at Snipe Dales, our local Nature Reserve, and have a stall at the Spilsby Show.

For more information, please contact Stef Round at stef.round@gmail.com.

**Are you seeking
Homecare Support?
We are here to help!**



The range of services we offer

Personal Care	Shopping Assistance
Home Help	Night Care
Companionship	Dementia Care
Respite Care	Palliative Care
Live-in Care	Hospital Discharge

For a free assessment
give us a call on:



www.clarityhomecare.co.uk/boston

01205 386 086

Halton Holegate C of E Primary School

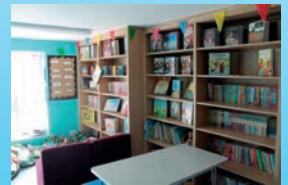
Learning and flourishing together within the love of God



Begin a lifelong love of learning in a caring, nurturing school with a strong Christian ethos.



- Warm and welcoming atmosphere just outside Spilsby
- An exciting curriculum giving children numerous opportunities to excel in a caring environment
- Distinctive Church School ethos
- Excellent Phonics and SATs results
- Smaller class sizes
- Strong links with the local church and community
- Nursery provision from 3 years old
- Wrap Around Care from 7.30am to 5.00pm



We currently have spaces in our Nursery, Year 1 and Year 3. If you are interested in having a look around our lovely school, please call us to make an appointment!

**Graded GOOD by Ofsted
January 2024**



👤: Halton Holegate C of E Primary School, Station Road, Halton Holegate, Spilsby, PE23 5PB

HEAD TEACHER - MR RICHARD BALDOCK

☎: 01790 752575

🌐: www.haltonholegateprimaryschool.co.uk



SPILSBY LIGHT NIGHT 2025

The fifth Spilsby Light Night illuminated the town on Saturday 8th February, once again bringing crowds of people onto the streets and filling community venues.

In the weeks preceding the event, artists worked with students in Spilsby Primary, Eresby Special School, Linkage College and Woodlands Academy and with Spilsby 2nd Scout Group and Grubby Knees Community Theatre, to create hundreds of lanterns for the event.

A Pegasus puppet led a community parade through the town to start the evening. Operated by local artists from Creative Heights, Pegasus has been created through the Sessions Arts 'All Rise' professional development programme.

Projections, installations, interactive light art, drummers, DJs, shows and street theatre filled every part of the town centre.



Spilsby Light Night 2025 was produced by Sessions Arts, with central government funding from the UK Shared Prosperity Fund (UKSPF) and with an Arts Council England, National Lottery Project Grant.

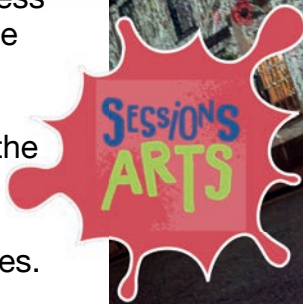
Sessions Arts is the creative producing arm of Spilsby Sessions House and will be based in the building when it reopens.



Work continues with the Spilsby Sessions House project both on and off site.

In preparation for reopening the venue (2026), Sessions Arts and Spilsby Sessions House charity have both been working with a team of professional consultants on detailed business planning. This work has been funded by the Theatres Trust and UKSPF.

The building project will be going through the planning permission process this spring/summer. Meanwhile Sessions Arts will be continuing to plan more events and activities.





Scouts

2nd Spilsby

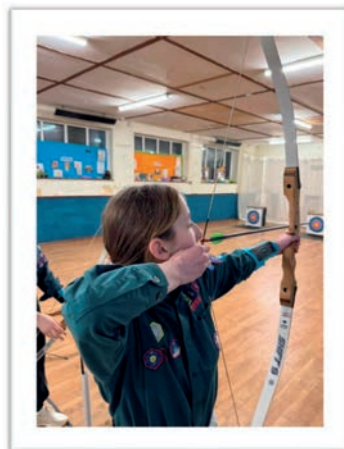
Scouting for girls and boys age
4yrs-14yrs

Find us on Facebook or email
gsl@2ndspilsby.org.uk

for details on how to join

**Camping, canoeing, kayaking, archery, tomahawk
throwing, campfires, team building, friendship,
challenges, new experiences, skills for life
and much more!**

**This is what we can offer our youth members on a
regular basis here at 2nd Spilsby Scout Group.**





Is your child looking to make new friends and enjoy a range of activities in a supportive and fun environment?

If yes, then Spilsby Rainbows is for them!

Spilsby Rainbows is for girls aged 4-7 years old.

We do fun badges, play games and have crafting sessions.

If interested, please contact Elle on 07909110205.

If you would like to volunteer to help please contact me.

SUNDAY 13th APRIL ~ 10am

SPRING WALK

Several colorful butterflies with orange, yellow, and black patterns are scattered around the title.

Take part in our
Spilsby/Lincolnshire fact quiz
(stationery provided)

Meet at the buttercross park
EVERYONE WELCOME
including your furry friends too

Refreshments served
afterwards at the
Nelson Butt Inn
Any donations
gratefully received to
Spilsby Town Events
£1 to join in

A cluster of colorful butterflies is positioned to the left of the refreshment information.



SPILSBY TOWN EVENTS

CHOCOLATE ~ BINGO ~

EVERYONE WELCOME



SUNDAY 13TH APRIL

2PM ~ 4PM

FRANKLIN HALL ~ SPILSBY



FRANKLIN HALL - SPILSBY

A COMMUNITY HALL (REGISTERED CHARITY), THE PERFECT PLACE TO HOST SOCIAL AND BUSINESS EVENTS IN THE HEART OF SPILSBY

MAIN HALL

FOR LARGER FUNCTIONS AND ACTIVITIES UP TO 300 PEOPLE.
IDEAL FOR COMMUNITY, CHARITY AND COMMERCIAL EVENTS, CLUBS, CLASSES,
SPORTS, WEDDING RECEPTIONS AND PARTIES ETC LARGER MEETINGS,
PULL DOWN SCREEN, STAGE AND MICROPHONES AVAILABLE

CONFERENCE ROOM

OFFERS A MEETING ROOM/SMALLER FUNCTION ROOM FOR UP TO 50 PEOPLE.
PULL DOWN SCREEN AND FREE WIFI OFFERING A FRIENDLY AND
PROFESSIONAL ENVIRONMENT.

KITCHEN/BAR AND LOUNGE

IDEAL SOCIABLE SPACE TO LINK TO THE ABOVE ROOMS AND ALSO IDEAL FOR
SMALLER DINING EVENTS (E.G. COFFEE MORNINGS, LUNCH GROUPS).

Hall Manager's Office generally open Tuesdays 11.15am to 2.15pm
and Thursdays 9.30 to 12.30.

Tel 01790 752913

Email: spilsbyfranklinhall@outlook.com

Photos and online events diary are available by visiting: spilsby.info/franklinhall