

SPILSBY EXPLORER

WINTER 2025



Photograph by John Wood - Spilsby Resident.



SPILSBY TOWN COUNCIL

CONTENTS

MAYOR'S MESSAGE / SPILSBY TOWN COUNCIL MEETING DATES	3
ELDC CLLR ELLIE MARSH / LCC CLLR MARIA HUME	5
SPILSBY FIRE SERVICE	7
SPILSBY LIBRARY	8
SPILSBY TOWN COUNCIL CLERK'S / U3A	12
SPEEDWATCH	14
SPILSBY WELLBEING MAP	16
ST JAMES' CHURCH	21
SPILSBY CHRISTIAN FELLOWSHIP	24
WARM SPACES WEEKLY PLANNER	25
FRIENDS OF RAF SPILSBY	28
ROYAL BRITISH LEGION	30
SPILSBY ROTARY CLUB	32
SPILSBY GRAMMAR SCHOOL FOUNDATION	34
SPILSBY SESSIONS HOUSE	35
SPILSBY PRIMARY SCHOOL	36
LINCOLNSHIRE WILDLIFE TRUST / SPILSBY & HUNDLEBY WALKERS	38
NEW LIFE CENTRE	39
FRANKLIN HALL	44

We would very much welcome any suggestions for future editions of the 'Spilsby Explorer'. Please share any news article. Most importantly please just get in touch, we would really love to hear from you.

The next edition will be published in April 2026.

If you would like to contribute please contact Spilsby Town Council.

Email: deputytownclerk@spilsbytowncouncil.gov.uk

MAYOR'S MESSAGE

I particularly enjoyed attending Spilsby Show this year. I was happy to talk to everyone and they were happy to talk to me.

Sleaford Civic Service was poorly attended. It is a great shame, because so much planning goes into these events.

I also attended RAF Spilsby to honour all of those who were killed in action there. Councillor Terry Taylor was also in attendance and we laid a wreath to commemorate those who had died in World War II. I also held a Commemoration for the end of the War in Japan. I now understand why the Bombs were dropped on Hiroshima and Nagasaki, but we should not forget the suffering of the Japanese people.

On another note, the Super Saturdays have been a great success. Lots of people have attended these events.

Regards
Liz Day
Mayor of Spilsby



DATES OF MEETINGS 2025 - 2026

All meetings to start at 6:00pm unless stated otherwise

FULL COUNCIL MEETINGS

Wednesday 26 November 2025

December Recess

Wednesday 28 January 2026

Wednesday 25 February 2026

Wednesday 25 March 2026

Are you seeking
Homecare Support?
We are here to help!



The range of services we offer

Personal Care

Shopping Assistance

Home Help

Night Care

Companionship

Dementia Care

Respite Care

Palliative Care

Live-in Care

Hospital Discharge

For a free assessment
give us a call on:



www.clarityhomecare.co.uk/boston

01205 386 086

Tongs of Spilsby

Hardware & Cookshop

Hardware DIY – Cookshop

1 HIGH STREET • SPILSBY • LINCOLNSHIRE • PE23 5JL

Tel: 01790 752548

ELDC Councillor Ellie Marsh

Well doesn't time fly! It only feels like the blink of an eye since I was writing last years end of year update. As we approach another Winter it's only right that we reflect on the achievements we as a Town have accomplished.

Spilsby Town FC have had another great year and have seen their first girls team playing in a local league. The new all-weather surface at the Recreation Ground has been constructed and Spilsby Super Saturdays have helped to showcase what a great Town we live in.

We had another super Recognition Awards in May that showcased the fantastic people and organisations who go out of their way and give up their valuable time to help others in the Town. The Town Council have invested in the play area to give the children something great to play on. They have also invested in the Christmas lights and I hope you will enjoy them over the festive period.

The Rotary put on the busiest Bike Night in history and I think you will all agree what a great night we had.

Works on the Sessions House have started and I cannot wait to see it in all its renovated glory.

So I thank everyone who has gone above and beyond for the Town this year.

Please remember that during the Winter times, there may be vulnerable people who need a little bit of extra support. Please pop and see your neighbour, check in on a friend or see if anyone needs a hand. There are also organisations who can help, and there are warm spaces at Spilsby Christian Fellowship and Spilsby New Life Centre.

If there is anything else you think the Town would benefit from please get in touch
Ellie.marsh@e-lindsey.gov.uk



Councillor Maria Lisa Hume



Party: Reform UK

Political grouping: Reform UK

Division: Wainfleet

Parish:

Bratoft ; Eastville ; Firsby ; Friskney ; Great Steeping ; Halton Hologate ; Irby in the Marsh ; Little Steeping ; Midville ; New Leake ; Spilsby ; Stickford ; Stickney ; Thorpe St Peter ; Wainfleet All Saints ; Wainfleet St Mary

District: East Lindsey



Contact information

Correspondence address:

C/o Democratic Services, Lincolnshire County Council
County Offices, Newland, Lincoln LN1 1YL

Email: cllr.m.hume@lincolnshire.gov.uk

It's the start
of something
special.



It's that **Newton Fallowell feeling.**

We're an estate agency that puts people at the heart of property. Landlords, buyers, renters, vendors... they'll all say similar things. That we know the Midlands like no-one else. That we care more about service. And that while others go through the motions, we'll go the extra mile for every single customer.

Pop in, call **01790 755222**
or search **Newton Fallowell**



HOW IS THE TOWN'S FIRE STATION AND CREW PERFORMING?

You will see below that the crew have had a busy few months over the late spring and summer period, attending 110 incidents in those 4 months. It should be noted that they attended 21 incidents with over 4 pumps, 7 in August alone, with one being within their own patch!

During this period, the station welcomed a new Firefighter, FF Ambridge, to their crew. They have settled in well and already attended their first incidents.

The crew had a successful Spilsby Show and were able to demonstrate their skills, including a Hose Running challenge in the main arena in aid of the Fire Fighters Charity. If anyone saw it, I'm sure they enjoyed the spectacle that was very similar to It's a Knockout.

Talking of the Fire Fighters Charity, FF Green has been given a lottery spot in next year's London Marathon in aid of our charity. Please look out for fundraising events that'll be happening around the town to ensure he meets the minimum needed to attend and cheer him on the day when it is televised.

By the time you read this, the crew will have had their first Station Open Day to support the Spilsby Super Saturday with the Emergency Services as it's theme and I hope you all took the opportunity to attend and join in the activities that they had planned.

So how many incidents has the crew attended between May 2025 and August 2025?

May - 23

June - 24

July - 30

August - 33



If you know anyone in the following groups, please encourage them to refer into Lincolnshire Fire & Rescue for a free Safe & Well check via the LFR website.

Smoker, Hoarder, Elderly, Reduced mobility, Mental health issues, Alcohol or drug dependant or needing care or support.



www.facebook.com/spilsbyfire



[@spilsbyfire](https://twitter.com/spilsbyfire)





SPILSBY LIBRARY

**The Library, located in the
Lincolnshire Co-op Food Store, Post Office Lane,
is open 9-5pm Monday to Saturday.**

**It is a community library, run by volunteers.
Volunteers are on hand to help you Monday - Friday.
See poster on library door for volunteer availability.**

During opening hours, you can borrow or return books and use the computers (you need your member number and PIN to log in). During most of the opening hours, there is a volunteer on duty to assist you. When a volunteer is on duty, you can join the library and use the computers if you're not a member. You can also print or photocopy (for a small charge).



COMMUNITY CUPPA COFFEE MORNING

Every Thursday morning, 10-12

Tea/Coffee/Cakes
and Biscuits available

FREE OF CHARGE
You can make a donation if you wish.

COMING UP THIS AUTUMN

The ever popular **BOOK SALE** will start again in October.

Come and grab yourself a bargain.

Paperbacks - 20p Hardbacks - 50p

All money raised goes to the Co-op Community Charity.

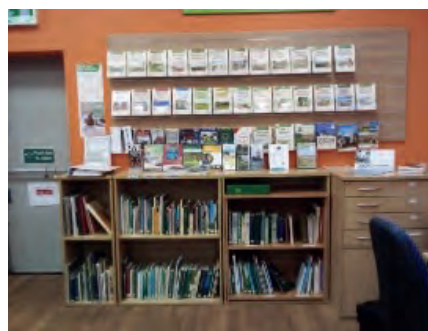


LOCAL HISTORY MATERIALS

We have an extensive range of local history materials.

This Autumn, there will be a display of these materials in the library and at other locations.

If you're interested in your family history or the local area (Spilsby and beyond), come along and browse what we have.



We also have a lot of information about famous Lincolnshire people and places and leaflets on what to do in the area.

WOULD YOU LIKE TO VOLUNTEER AT THE LIBRARY?

We are always looking for new volunteers to join our friendly team.

If you have a few hours spare a week, why not consider volunteering at the library? You need to have basic computer skills, but full training is given on all aspects of the role, and you will be supported by other volunteers.

If you're interested, go along to the library where you can talk to any volunteer about what the role involves. Here you can also pick up an application form, and if you give your contact details to the volunteer, the volunteer coordinator will get in touch with you.



GILLY & SON

Window Cleaning Services

For all your exterior cleaning needs

- Window Cleaning
- Gutter Cleaning
- Soffit & Fascia Cleaning
- Conservatory Cleaning



Gutter cleaning with gutter vac system



Covering a wide area
of Lincolnshire



 Find us on
Facebook

Call Now For A Free, No Obligation Quotation

07872 984939 / 07845 822299



-A safe space to find balance & peace from within-

How are you? How are you, really?

Are you struggling with stress, low mood, anxiety, loss, relationship issues, low self-esteem, change, trauma?

Are you no longer enjoying things that used to make you happy?

Whatever your concerns, talking them through ***in confidence*** can feel liberating.

A safe space. No judgement.

I am a fully qualified counsellor, and I am ready to help you explore the things that are troubling you.

I provide online counselling to over 18's.

Why not get in touch and arrange a chat?

Visit: www.emmanewburycounselling.co.uk

E-mail: info@emmanewburycounselling.co.uk

Call/ text/ WhatsApp: 07392 027452

-BACP Member (00978611)-

TOWN CLERK'S UPDATE

Hello

It's been another busy summer for the Town Council that has brought about some new and interesting challenges! I'm sure there will be even more over the Autumn and Winter for the Town Council to encounter, and hopefully the Town Council can continue to raise the profile of Spilsby.

PLAY AREA

The Town Council will install new equipment in the play area this November as part of phase 2 of the redevelopment project. After consulting the local schools, they have chosen some items which will be installed in this phase and phase 3. I'd like to thank the schools and the children for their feedback. Hopefully, when they see the new equipment, the children will be able to take some pride in being able to shape their community. We hope this serves as a wider lesson that their actions help make their community what it is.

The Town Council have received substantial grants for the new equipment in phase 2, from the East Lindsey Investment Fund and Platform Housing. Many thanks on behalf of the Town Council for their support and thanks to the suppliers - Proludic Ltd for a tailored play area design based on the explorer theme and Sir John Franklin. We hope the play area encourages the children to be curious and inquisitive. Please remember the play area equipment is designed for 3-12-year-olds.



SUPER SATURDAYS

The Super Saturday events have been very successful; we've received some fantastic feedback! Thanks must go to the Councillors and volunteers involved in the organisation. Hopefully these events can go from strength to strength in 2026. New volunteers are always welcome to help contribute to the success of these events.



BRONZE ACCREDITATION

Earlier this year, Spilsby Town Council achieved bronze accreditation through the Local Council Award Scheme. I am delighted the Town Council have received this award as it shows we have good practices in governance, community engagement and council improvement. This award shows that the Town Council have gone above and beyond the legal obligations and continuously seek opportunities to improve and develop even further.

This award is testament to the hard work of staff and Councillors; my thanks to them for all their efforts. It makes Spilsby Town Council one of only six Councils in Lincolnshire to currently hold any type of accreditation through the Local Council Award Scheme and work now begins toward the Silver Award, to ensure we go from strength to strength.

HALTON ROAD HOUSING DEVELOPMENT

This development looks to be progressing. The Town Council hope to arrange a public meeting with the developers to learn more about the project. Information about the meeting will be posted on our website and on the noticeboards. The Town Council have responded to ELDC about the planning application, which is available to view on their website.

CHRISTMAS LIGHTS

The Town Council will look to improve the Christmas lights display over the next few years. Improvements may not be noticeable immediately as initially costs have been on infrastructure and safety testing. We hope that this will lay strong foundations for new light displays to be installed over the coming years and improve the festive appearance of the town. We welcome your suggestions on what you would like to see in the Christmas lights display.

Best wishes,

Jack

Jack Sargent - 01790 753189

townclerk@spilsbytowncouncil.gov.uk <https://spilsby.parish.lincolnshire.gov.uk/>



One of our Committee Members has heard an interesting description of u3a as 'a youth club for older people'. It is an excellent way to meet new people and partake in activities which interest you.

Spilsby u3a has its main meeting in the Franklin Hall on the second Wednesday of each month 2-4pm. Find out about forthcoming group meetings, break for refreshments and chat to like-minded people, sign up for activities you fancy, and then listen to an interesting speaker.

Here are the speakers for the coming few months.

Nov 12th	Nigel Lowey	The Transformation of St Pancras
Dec 10th		Christmas musical entertainment
Jan 14th	Dr Jon Fitzgibbons	The Battle of Winceby
Feb 11th	Robin Dennett	(The History of) Dennett's Ice Cream
Mar 11th	Dave Start	History Destroyed, Medieval Standing Crosses

Becoming a member entitles you to join as many groups as you like which have room for new members.

Some groups pay for hall use and there are entrance fees and transportation to add but otherwise all this for only £15 for the year. Come along and see if u3a is for you. You can come twice to the main meetings for free to help you decide. If you would like to join one or more of the groups, we ask you to join so that you are covered by our insurance.



Our Speedwatch Team have been out three times since the last issue of the Spilsby Explorer.

On those three occasions, 128 motorists out of 938 recorded were speeding. That's 13% of drivers ignoring the speed limits.

Of these, 41 escaped being registered because of a shortage of volunteers.

One of our team has changed jobs to regular hours, so therefore, has less availability to do Speedwatch sessions.

If you would like to volunteer, please contact our Town Clerk, Jack Sargent on 01790 753189





VOLUNTEERS NEEDED

SPILSBY SUPER SATURDAY NEEDS YOUR HELP

AFTER A GREAT YEAR WE ARE LOOKING FOR VOLUNTEERS

NO NEED TO SIGN UP FOR THEM UP, DO THE ODD ONE

**FOR MORE INFORMATION PLEASE CONTACT
CLLR ELLIE MARSH ON 07969862982**



WELLBEING MAP OF SPILSBY

Engaging in the 5 Ways to Wellbeing every day can help you improve or sustain your mental health and wellbeing.

A MAP OF OPPORTUNITIES



LINCS AVIATION HERITAGE CENTRE

Funded & commissioned by East Lindsey District Council
Concept & design by Art Pop-Up artpopup.co.uk



SPILSBY PAVILION & PLAYING FIELDS



THE 5 WAYS TO WELLB...



FOOD BANK & WELLBEING HUB

OUTDOOR MARKET

FRANKLIN HALL

GUNBY ESTATE, HALL & GARDENS

BEING: CONNECT | BE ACTIVE | TAKE NOTICE | LEARN | GIVE

ABOUT US



East Lindsey District Council recognises the vital role our communities play in promoting health and wellbeing across the district, including the town of Spilsby.

This map highlights a wide range of local opportunities where residents can learn new skills, build friendships, and strengthen community connections—supporting a healthier, more connected lifestyle for everyone.

For more details visit:
e-lindsey.gov.uk/article/6955/Community-Wellbeing



The 5 ways to wellbeing

CONNECT | BE ACTIVE | TAKE NOTICE | LEARN | GIVE

A MAP OF OPPORTUNITIES!

THIS MAP WAS PRODUCED BY EAST LINDSEY DISTRICT COUNCIL WITH ART POP-UP. IT EXPLORES OPPORTUNITIES FOR LOCAL RESIDENTS TO SUPPORT THEIR WELLBEING AND IMPROVE MENTAL HEALTH THROUGH REGULAR ACTIVITY RELATING TO THE 5 WAYS TO WELLBEING.



Art Pop-Up

SPILSBY

Spilsby & District Food Bank

New Life Centre, Church Street, Spilsby PE23 5DU

01790 754 092

david.bruce23@nhs.net

Monday 12-3pm

Tuesday 12-3pm

Wednesday 10-5pm

Friday 12-5pm

Closed Thursday, Saturday, Sunday

Spilsby Wellbeing Hub

New Life Centre, Church Street, Spilsby PE23 5DU

07901 211 220

suzy.pearl@nhs.net

Providing mental health support and wellbeing

Spilsby Night Light Cafe

New Life Centre, Church Street, Spilsby PE23 5DU

0300 011 1200

nightlight@actstrust.org.uk

Every Wednesday and Friday – 5 – 8 pm (may vary on bank holidays)

Eve – Women's Wellbeing Support Group

New Life Centre, Church Street, Spilsby PE23 5DU

07901 211 220

Providing a safe place for women to meet, socialise and talk

Tuesdays 7 – 9 pm

Spilsby Pavilion and Playing Fields

Ancaster Avenue, Spilsby PE23 5HL

07825 545 704

Hundleby Community Café

Parish Rooms, Church Lane, Hundleby PE23 5NA

Every fourth Thursday of the month 2pm – 4pm

stmaryshundleby@btinternet.com

Hundleby Community Choir

Parish Rooms, Church Lane, Hundleby PE23 5NA

Every Thursday (except for seasonal breaks)

7pm – 8.30 pm

hundlebycommunitychoir@gmail.com

Spilsby Theatre

Church Street, Spilsby PE23 5DY
Currently undergoing a regeneration project
bringing it back to life as a cultural venue
spilsbytheatre.com

Spilsby Community Library

Coop Building, Post Office Lane, Spilsby PE23 5LH
Monday to Friday 9am – 5pm
Saturday 9am – 1pm

Spilsby Outdoor Market

Spilsby Market, Market Place, Spilsby PE23 5JT
Every Monday
e-lindsey.gov.uk/MarketDays

Franklin Hall

Halton Road, Spilsby PE23 5LA
01790 752 913
spilsbyfranklinhall@outlook.com

Gunby Estate, Hall and Gardens

Gunby, Spilsby Lincolnshire PE23 5SS
nationaltrust.org.uk/visit/hottinghamshire-
lincolnshire/gunby-estate-hall-and-gardens
01754 890 102
gundbyhall@nationaltrust.org.uk

Snipe Dales County Park and Nature Reserve

Lusby, Spilsby PE23 4JB
Car parking available
OS Map Reference TF 319 683
What3Words: //hides.frizz.rivers
lincstrust.org.uk/nature-reserves/snipe-dales

Lincolnshire Aviation Heritage Centre

East Kirkby Airfield, Spilsby, Lincolnshire, PE23 4DE
Open Tuesday to Saturday 9.30am – 4pm
01790 763 207
lincsaviation.co.uk

Spilsby Town Council

Franklin Hall, Halton Road, Spilsby PE23 5LA
01790 753 189
Opening hours – 10 – 12 pm Monday to Thursday
(also by appointment outside opening hours)
townclerk@spilsbytowncouncil.gov.uk

Spilsby Christian Fellowship

Halton Road, Spilsby PE23 5LA
01790 752 457
spilsbychristianfellowship@live.co.uk
Parent and Toddler Group - Monday & Wednesday
term time only, Baby Group - Tuesdays term time
only, Thursday - coffee morning. All at 10 – 11.30am.

BroProUK

New Life Centre, Church Street, Spilsby PE23 5DU
Thursdays 7 – 9 pm
07939 092 585
David.bruce23@nhs.net

Spilsby Surgery

The Surgery Bull Yard, Simpson Street, Spilsby
PE23 5LG
01790 728 111
spilsbysurgery.com

CONNECT TO SUPPORT

Connect to Support Lincolnshire is an online directory helping you to manage your health & wellbeing. It is the place to go to for information & advice on all aspects of health and wellbeing & adult social care in Lincolnshire. Please visit:
lincolnshire.connecttosupport.org

HOW ARE YOU (H.A.Y.) LINCOLNSHIRE

H.A.Y. Lincolnshire is an online directory to find local groups and activities to boost your mental health and wellbeing. Please visit
haylincolnshire.co.uk

NHS MENTAL HEALTH

If you need help for a mental health crisis or emergency anytime during the day or night, you should get immediate expert advice and assessment by calling 111 and select the mental health option 2. You can also get help from 111 online: 111.nhs.uk/triage/check-your-mental-health-symptoms

SAMARITANS

If you need someone to talk to, you can contact a Samaritan. Any time day or night, whatever you are going through, Samaritans will not judge or tell you what to do. Call 116 123 free or online at samaritans.org/how-we-can-help/contact-samaritan

LOCATION OF LIFE-SAVING DEFIBRILLATORS

To find exact locations of all the defibrillators in the area and many others within the district can be found at www.defibfinder.uk

5 Ways to Wellbeing

CONNECT | BE ACTIVE | TAKE NOTICE | LEARN | GIVE

Evidence suggests there are 5 steps you can take to improve your mental health & wellbeing. Trying these things could help you feel more positive & able to get the most out of life. Find out more on the NHS website.

FUNDED, COMMISSIONED & WITH CONTENT BY EAST LINDSEY DISTRICT COUNCIL

CONCEPT, DESIGN & ILLUSTRATION BY ART POP-UP

THE WELLBEING MAPS © ART POP-UP 2025 ALL RIGHTS RESERVED

WIL-LEC

group

Established 1997

LOCAL SOLAR INSTALLER
Commercial & domestic
01472 867286
www.wil-lec.co.uk



Powerwall
Authorised Partner



Telephone
01790 378739

MARSTON WINDOW SYSTEMS

Email:
info@marstonwindowsystems.co.uk



We are delighted to let you all know that we have a lovely new noticeboard just outside the main entrance to the church, on Church Street. We will keep this up to date with events each week, but these are also now posted on our Facebook page, so if you don't already follow us, please do:



St James Church Spilsby

Some of you have been busy knitting and crocheting for our knitted chain decorations which we are going to put up in the church for Christmas (and if there are enough outside the church too). You can now drop these into the church and just leave them at the back for us to collect. Then do return in December to see them all hung up.

In the Church, November is known as the month of remembrance. On 1st November we have All Saints Day when we reflect on the lives of the Saints and Martyrs who have gone before us. Similarly on the same day we have All Souls Day, when we remember loved ones who have passed away. Then the following week we will hold our usual Remembrance Service which gives us an opportunity to remember those who have died in wars of the years for our country, and those who continue to serve in the armed forces.

Sunday 2 November, 5.00pm
All Souls Service
St James Church, Spilsby

Sunday 9 November, 10.00am
Remembrance Service,
St James Church Spilsby

Then in December we celebrate the arrival of Jesus as a baby and the Church will be decorated with the knitted chains, plus we have the return of the Christmas Tree Festival, which starts on Cracker Day. There are other events too, with various concerts, which will be advertised by the various organisations. We will be holding another "Blue Christmas" service, which is one where people who don't feel like celebrating the season can come and have a reflective time, with an opportunity to remember loved ones.

On Christmas Eve we have the traditional Christingle Service, and all are welcome to join us to make the Christingle in the morning at 10.00 am. The Christingle Service will include an interactive nativity, so do bring the whole family and children are welcome to dress up as characters from the nativity. This is followed later by Midnight Mass and then a Christmas Day service, all listed below:

Saturday 6 December, 10.00am
Christmas Tree Festival begins
in St James Church, Spilsby

Saturday 20 December, 10.00am-12noon,
Coffee Morning with Crafts for children
in St James Church, Spilsby

Monday 22 December, 6.30pm
Blue Christmas Service
in St James Church, Spilsby

Wednesday 24 December (Christmas Eve)
10.00am Christingle Making
3.00pm Christingle Service
with interactive Nativity
11.30pm Midnight Mass

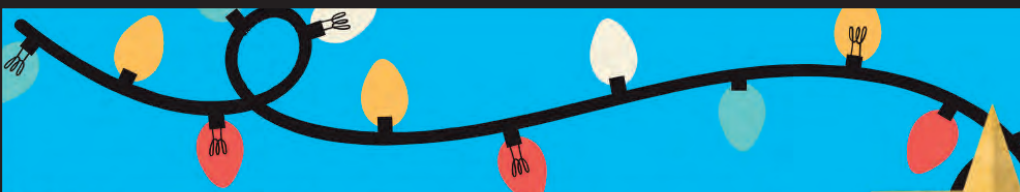
All in St James Church, Spilsby

Thursday 25 December (Christmas Day)
10.00am Holy Communion Service
in St James Church, Spilsby

Then in January we celebrate Epiphany, which is when the three wise men, or three kings, visited Jesus.

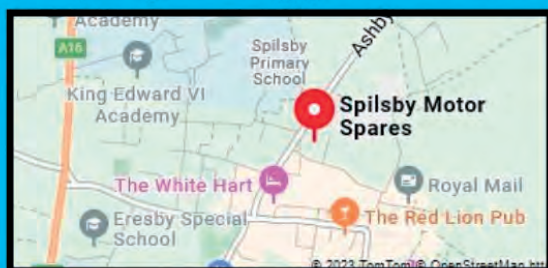
It will be great to see you at one of our events, all are welcome.

Rev Judith Simons




SPILSBY
Motor Spares
01790 754699

Reynard St, Spilsby, PE23 5JB



Mon - Fri
8:30am - 5:30pm

Proud to stock:

- Napa
- Bosch
- Valvoline
- Apec
- Gates



We wish all our
wonderful customers
a very merry Christmas
and lovely new year



Member of
GROUPUTO

SPILSBY MOTOR SPARES

Your Local One-Stop Shop
for Car Parts & Accessories



Looking for quality car parts at competitive prices?
At Spilsby Motor Spares, we've got everything you
need to keep your vehicle running smoothly – from
essential spares to handy everyday motoring items.

OUR RANGE INCLUDES:

- Wheel bearings, spark plugs, brake pads & discs
- Car accessories, polish & wax, bulbs, wipers & more
- Oils, fluids, screenwash, antifreeze & de-icer
- Tools and workshop essentials

Our friendly male and female team are here to offer
advice and help you find exactly what you need –
whether you're a trade professional or a DIY car enthu-
siast.



Moving through Autumn and into Winter

As we move into those colder, darker days, we want you to know there is a warm welcome waiting for you at Spilsby Christian Fellowship, situated on Halton Road, next to the Franklin Hall.

Do pop in for a chat, attend our groups - booking is not necessary, or request support - you do NOT need a referral to access our help with food or school uniform.

Our Hall is now accessible to all, with ramped access and disabled toilets. We continue to modernise the building with steps underway to apply for a grant to install air conditioning which will further improve the warmth and efficiency within. Our aim over the Winter is to secure builders to enable us to continue with the next phase, the extension to the Church and making the Portacabin a permanent building (if you know a builder who would be interested, please do encourage them to get in touch).

We have launched a new Church website with detailed information of who we are, what we do and upcoming events, why not take a look at christianfellowship.wixsite.com/home/events

The Autumn term at the Fellowship got off to a busy start with the return of "Come & Play Tots", Baby Group, Antenatal Classes, Youth Group and Thursday "Coffee n Chat" as well as a couple of special events.

September saw our first "Crafty Friends" where 18 ladies created their own "Autumnal Wreaths". It is hoped that "Crafty Friends" will become a popular monthly event, with a different craft offered and an opportunity to get together, relax, chat, learn new skills and promote positive health and well-being.

We celebrated harvest in September with families attending "Harvest Messy Church" and a busy "Harvest Celebration Service" – both these events finished with a shared meal – a popular part of all our Sunday services is fellowship over a cuppa afterwards!! – you'd be most welcome to join us Sundays at 10.30am.

As we move through Autumn, we have our final **Rummage Sale** of the year on **Saturday 25 October at 10am**, our **"Light Party"** to look forward to on **Friday 31st October 5pm til 7pm**, and then onto our **Christmas Sale on Saturday 29 November 10-12noon**, **Cracker Day Crafts on Saturday 6 December 9 til 3pm**, and our popular **Family Nativity Service on Sunday 21 December at 10.30am**.

Once again, this year we will be supporting local people by running our "Christmas Stocking Appeal", putting together "Christmas Gifts" for local vulnerable families and individuals referred by Schools and partner agencies and our appeal for new pyjamas for children from 8 to 18yrs on behalf of the Charity "Children's Hospital Pyjamas". If you are involved with a local group, club, business or would like to offer sponsorship or help in donating towards either of these appeals we would be really grateful. Just get in touch with me via Facebook or via email at spilsbychristianfellowship@live.co.uk.



In Spilsby and across East Lindsey, there are Warm Spaces - venues where people can gather for free in a safe, friendly place to enjoy a drink and some company,

The network of Warm Spaces is made up of libraries, community centres, church halls, sports clubs and other places. Warm Spaces are totally free to use and are open to everyone.

Search the directory to find your nearest Warm Space: <https://www.warmwelcome.uk/find-a-space>

Please see list below for Warm Spaces currently available in Spilsby. This may be subject to change during the Winter. Spilsby Town Council will keep an updated list on our Notice Boards and our Website.

Franklin Hall, Halton Road, Spilsby events diary is online (fees may apply).

Spilsby Library, Co-Op, Post Office Lane, Spilsby

Spilsby Christian Fellowship, Halton Road, Spilsby

New Life Centre, Church Street, Spilsby

Spilsby Methodist Church, Halton Road, Spilsby

There are of course Cafes and Pubs in the Town as well.

Monday Spilsby Community Library, Co-op, Post office Lane (9am-5pm)
 Spilsby Christian Fellowship 'Come & Play Toddler Session' (10am-11.30am)
 Spilsby Methodist Church Coffee Morning
 New Life Centre 12 pm-3pm

Tuesday Spilsby Community Library, Co-op, Post office Lane (9am-5pm)
 Spilsby Christian Fellowship 'Baby Group
 (for Parents/Carers with New-born Children to Under 1)' (10am-1.30am)
 New Life Centre 1pm-3pm and 7pm-9pm (Women Only)

Wednesday Spilsby Community Library, Co-op, Post office Lane (9am-5pm)
 Spilsby Christian Fellowship 'Come & Play Toddler Session' (10am-11.30am)
 New Life Centre 7.30am-5pm

Thursday Spilsby Community Library, Co-op, Post office Lane (9am-5pm)
 Spilsby Christian Fellowship 'Coffee Morning/Coffee N Chat' (10am-11.30am)
 New Life Centre 7pm-9pm (Men Only)

Friday Spilsby Community Library, Co-op, Post office Lane (9am-5pm)
 New Life Centre 12pm-3pm

Saturday Spilsby Community Library, Co-op, Post office Lane (9am-1pm)





Looking at care options for a loved one can be an emotional, exhausting, and daunting decision.

At Eresby Hall in Spilsby, we get it, and we're here to help.

Our caring team takes the time to get to know each resident and their loved ones to ensure the care, support and experience we provide is specific to them.

We offer:



**Residential
Care**



**Dementia
Care**



**Respite
Care**



**Day
Care**

Want to find out more?

Call **01790 720 073**

Visit osjct.co.uk/eresbyhall

Facebook/[OSJCTLincs](https://www.facebook.com/OSJCTLincs)

Where to find us:

Eresby Hall

Ancaster Avenue

Spilsby PE23 5HT

REMEMBRANCE DAY 2025

Poppy Display

PLEASE MAKE A POPPY FOR SPILSBY POPPY DISPLAY

THEY CAN BE PAINTED, DRAWN, CROCHETED, KNITTED ETC

**POPPIES CAN BE HANDED IN AT THE LIBRARY OR AT
FRANKLIN HALL**



**FOR MORE INFORMATION.
PLEASE CONTACT**

**ELLIE MARSH
ELLIE.MARSH@E-LINDSEY.GOV.UK**

Friends of RAF

On Saturday 16th August 2025, in the 80th year since the Victory in Europe and the end of WWII, over 120 people gathered at the RAF Spilsby airfield memorial for a poignant ceremony to commemorate the men and women from the United Kingdom, the Commonwealth and Allied Nations who served with 44(Rhodesia) Squadron, 207 Squadron and as part of the station personnel at RAF Spilsby. The service also included the rededication of the memorial in commemoration of the refurbishment, completed in 2024.

Following a message of welcome by Chairman Paul Valleley, Canon Peter Coates presided over the service organised by the Friends of RAF Spilsby. The service included personal moments; David Newall read extracts from letters written home by his father, Flight Engineer Les Newall, whilst Eighty-Eight-year-old Ray Williams touched the hearts of those listening when he spoke of the loss of his father Arthur Haydn Davis, when he was a boy growing up in Swansea.

As part of the rededication, Ruth Ryan, in her reading, 'the meaning of a memorial' spoke movingly of the loss of her relative Kenneth Sansom. Concluding 'Even though Kenneth, Ronald and Henry are buried in Holland, Lyle in Cambridge, Dave, Douglas, Leslie and Trevor have no known grave, so the carved inscriptions on this memorial panel "Remember me for I was here" is so fitting, for although they are no longer here in body, they are forever here in spirit.'

Following the Act of Thanks Giving, the playing of the Last Post and the Silence, Wreaths were laid by Squadron Leader Chris Bicknell and Warrant Officer Stu Clarke representing 207 Squadron. Other Wreaths were placed by Walter Downes for 44(Rhodesia) Squadron Association, John Cotton RAFA Armourers Branch, Royal British Legion Spilsby Chair Suzanne Scott for the Women who had served at RAF Spilsby and Mayor Liz Day and Cllr Terry Taylor representing Spilsby Town Council.





In his concluding message, Event Organiser Kevin Mapley, thanked those gathered who had shared in turning another page in the story of this wartime airfield. He gave testament to the dedication of the volunteers of the Friends of RAF Spilsby who had cared for the memorial site since the disbandment of 207 Squadron RAF Association in 2013.

The final order of the day was for the Standards of the RAFA Armourers Branch, Royal British Legion Spilsby, Royal British Legion Hose & Harby and the Union Flag of Hose & Harby, to march off to the playing of the RAF March Past.

‘The Armed Man - A Mass for Peace: Benedictus’ by Karl Jenkins was the opening music to the service. Google it and play this beautiful and moving piece of music for a moment of personal remembrance.





THE SPILSBY LEGION NEEDS YOU

The Spilsby Branch of the Royal British Legion is again reaching out to the people of Spilsby and the surrounding district to help us in continuing the work we do to keep the spirit of Remembrance alive and to help with the annual Poppy Appeal.

We are asking for people to join the Branch and help us with these roles. It is no longer necessary for members to have served in the forces community; all that's needed is a willingness to help out with the Branch's important annual commitments.

We are especially in need of someone to take on the role of Branch Secretary. It is not an onerous position but it needs someone who can take the minutes at the monthly meetings and produce these on a computer to be



distributed via email to members which is done by the Branch chair. Failure to find a secretary will result in non-compliance and the Branch being taken over by county and our Standard removed from us.

The cost of membership is a very reasonable £20 per year. Full details on how to join can be found on the Legion's website britishlegion.org.uk or phone 0800 307 7773 (free). You can also contact the branch's chair, Suzanne Scott on :-

spilsbydistrict.chair@rbl.community if you need further information.



Christmas by Candlelight



Featuring Alford Silver Band

Halton Holegate School Choir

At St James' Church

Spilsby

Friday 5th December 2025

From: 7.00pm

Retiring collection

In memory of Gary David Cole 'The only thing that ever matters is to love and to be loved'



ROTARY CLUB OF SPILSBY

The new President of Spilsby Rotary, Bill Wallace, was quickly into his stride as one would expect from a Rotarian who has been President of two other Clubs in the past. Now that the number of Rotarians in Spilsby is growing again, he has re-established the Council and Committees that the Club used to have before Covid restricted activities and reduced membership.

This has streamlined the running of the Club, brought newer members into roles where they will build experience and galvanised the spread of ideas for making the Club even more active in the local community.

One of the first tasks for the 2025-26 Presidency was to present a Cheque for over £600 to the Lincs and Notts Air Ambulance covering profits from Spilsby Bike Night organised by the Rotary in May. This was such a phenomenal success, with many shops, bikers and the general public contributing to the collection, that Spilsby Rotary has agreed to organise the event once again next year.



President Bill Wallace hands the cheque from Spilsby Bike Night to Lincs and Notts Air Ambulance

To show their gratitude, Steve Tandy from the Air Ambulance invited Spilsby Rotarians to a behind the scenes tour of their Headquarters in Waddington which is being arranged soon.

Another local repeat was a £200 sponsorship of a match ball and the officials for Spilsby Football Club at the Saturday home fixture against Louth in September. Other donations to local organisations include 10 rucksacks for the New Life Centre in Spilsby to distribute to the homeless in East Lindsey.

Some well-established activities organised by Spilsby Rotary that are popular in the Town and surrounding area will happen again this year. The Firework display will once more be held on the playing fields on 5th November with long-serving Rotarian Neil Blanchard again leading the pyrotechnics. To ensure the safety of all present, four Rotarians have attended a course in safety measures at such an event to update their skills and knowledge.

Cracker Day will also be organised again by Spilsby Rotary at the Franklin Hall on

Saturday 6th December with stallholders already signing up for the event, which will run from 10am to 3pm. Anyone wishing to book a stall costing only £10 should email Geraldine Willis on geraldinewillis@outlook.com. Stallholders will need to organise their own insurance.

The Christmas festivities will continue with the erection of the Town's Christmas Tree, paid for by Spilsby Rotary and the Town Council, near to the Franklin Statue and local residents will be invited to sponsor a Light for a Loved One in memory of a family member or friend who has passed away.

Then there will be the Rotary's annual carol service at St James's Church on Friday 12th December with local schools invited to take part.

The Rotary also has an international dimension and the Club was addressed by representatives of the Sharon Miller Memorial Foundation, which helps Kenyan women who are left to fend for themselves by either being abandoned, divorced or widowed. Spilsby Rotary donated £250 towards teaching the women to grow crops on the land that they have around their homes, instruct them on animal husbandry or to make goods that can be sold.

Anyone wishing to join Spilsby Rotary should visit the website www.spilsbyrotary.org where details of our activities are on display.



Rotarian Ian Steltner (far left) hands the sponsored match ball before the Spilsby Town fixture accompanied by President Bill Wallace (second right)



Resting Woods — A Natural Journey

Based at Wainfleet St Mary, we provide a natural option as a place of rest. We offer both a burial and ashes interment service, within a newly established flower meadow. Over time the site will become a native woodland to provide a peaceful place for families to visit and a hub for nature.

To find our more please get in touch, come along to an open day
or see our website: www.restingwoods.co.uk.

Location: Church Lane, Wainfleet St Mary, PE24 4JT, just east of the church.

Contact: John Smithson Whitehead, 07498 222670, office@restingwoods.co.uk

SPILSBY GRAMMAR SCHOOL FOUNDATION

**CURRENTLY HAS FUNDS AVAILABLE TO ASSIST
FORMER PUPILS OF**

KING EDWARD VI ACADEMY

**(formerly KING EDWARD VI HUMANITIES COLLEGE and
KING EDWARD VI SCHOOL, SPILSBY)**

**with their exceptional costs if they are presently in
further/higher education or training and are over 18 and
under 25 years of age on 31st December 2025.**

Applications from former pupils of Spilsby, Great Steeping,
Halton Holegate, Partney & Toynton Primary schools who went
elsewhere for secondary education will also be considered.

**To see further details and to download a copy of the
Criteria and Application Form go to**

www.spilsbygsf.org.uk

**APPLICATIONS must be received by
12 noon on Monday 26th January 2026.**

Spilsby Sessions House Project Update

Following the approved planning application and listed building consent in July, works have begun on site.

Messenger Construction are currently working at Spilsby Sessions House, and we would like to inform you of some key works which will be included in this time period.

Works have begun on site and the current planned works will end on 31st March 2027.

These works consist of:

- scaffolding
- brick and stone works
- roof works
- internal structural steel works
- ventilation
- plumbing and wiring
- installation of theatre equipment and seating
- external landscaping and access improvements to the front of the building.



Site hours will operate Monday to Friday from 7:30 until 16:30. There are currently no planned weekend works at this stage of construction.

East Lindsey District Council were successful in their £1.006 million bid to secure extra funding for the project from Historic England. This funding will help complete essential conservation works to the roof of the building, repairing of brick work where needed across the site and to the conservation and repair of windows throughout the building.

We will keep residents up to date via our East Lindsey District Council social media channels and you can also view our dedicated project website here: <https://connectedwolds.co.uk/spilsby-sessions-house/>



Spilsby Primary:

A Joyful Start to the New School Year

There's a real buzz around Spilsby Primary School this September as our school community comes back together after the summer holidays. It has been wonderful to welcome Pupils, Staff, and Families back through the gates, ready for another exciting year of learning and growth.

Every morning, Children are greeted with lively music and a host of activities to get the day off to a positive start. From a wide variety of sports to engaging morning challenges, we're proud to create a fun, active, and welcoming environment where every child feels ready to learn.

Our brand-new Reception class have had a fantastic start to their educational journey with us. Already, they've enjoyed a special visit from Spilsby Fire Service, complete with the excitement of sitting in a real fire engine and celebrated their very own Prince and Princesses Day, which was filled with fun, imagination, and plenty of sparkle.

We are also thrilled to celebrate some fantastic achievements from last year. Spilsby Primary has been awarded the prestigious Gold School Games Award, recognising our commitment to sport and physical activity, and the Level 1 RHS School Gardening Award, which acknowledges the wonderful start we've made in developing our gardening curriculum. We're looking forward to building on this success, encouraging our pupils to get outdoors, grow their own produce, and learn more about the natural world.

Sport continues to play a big role in our school life. In just a few weeks' time, a group of pupils will proudly represent

Spilsby Primary in a tag rugby tournament, with more exciting competitions lined up across the school year. From athletics and football to netball and beyond, there will be plenty of opportunities for children of all ages to enjoy taking part, developing their skills, and representing our school.

This term, we're also proud to be supporting Children in Need in a very special way with a visit from Pudsey himself! It's always wonderful to see the joy and excitement these moments bring to our pupils, while helping raise money for such an important cause.

A huge thank you goes to our amazing PTFA, who work tirelessly throughout the year to put on events for our children and families. With the Halloween Disco just around the corner, and plenty more activities planned, their support adds so much to the vibrant life of our school community.

Looking ahead, the Autumn term promises plenty of special events and celebrations. We're excited to welcome Grandparents into school soon for our much-loved Grandparents Day, an opportunity to celebrate the important role they play in our children's lives. We will also be marking Harvest Festival with the local community before turning our attention to the sparkle and joy of the festive season. With Christmas concerts, activities, and celebrations on the horizon, there's much to look forward to.

At Spilsby Primary, we're proud to be a school that celebrates learning, family, and community and we can't wait to see what the year ahead brings.

22ND
OCT
2025

26TH
NOV
2025

7TH
JAN
2026

**RECEPTION SCHOOL
STARTER IN SEPT**

2026?



**Are you considering
our school for your
child's Reception start
in September 2026?**

**Join us for a tour and see
what makes our learning
community special!**



01790 752503

Tour Dates:
Multiple dates available -
please contact the school
office for specific times.

**WHAT TO EXPECT ON
YOUR TOUR:**

**Meet Our Dedicated Team - Friendly,
experienced teachers and staff**

**Explore Our Facilities - Modern classrooms,
outdoor play areas, and engaging learning
spaces**

**See Our Approach in Action - A glimpse
into the warm, nurturing environment that
supports every child's growth**



LINCOLNSHIRE WILDLIFE TRUST SPILSBY AREA GROUP



If you enjoy talks about wildlife and nature, with spectacular pictures, why not come along to the monthly meetings held by the Spilsby Area Group of Lincolnshire Wildlife Trust?

We meet on the first Thursday of the month from September to April, at the Franklin Hall, with the talks starting at 7.30pm. There's no need to be a member of LWT, and no charge to attend the talks, although donations are always welcome. There's a raffle and refreshments, and you will be made very welcome. Our next talk is on Thursday 6th November, when local wildlife expert and intrepid traveller, Roger Wardle, will be talking about his exciting trip to Kazakhstan. Do join us!



SPILSBY AND HUNDLEBY WALKERS ARE WELCOME

Spilsby and Hundleby Walkers are Welcome is a group that exists to promote the use of our local public footpath network by organising monthly guided walks that are open to all. The walks range from 4 to 7 miles, take place on different days of the week, and within 6 or so miles of Spilsby. Our next walk will be from Hundleby Parish Room, Church Lane, Hundleby, starting at 10am on Saturday 15th November, and will be a 6 mile walk to Old Bolingbroke and back. Please come suitably dressed and bring a drink and a snack with you. Sorry, no dogs on these walks. There's no charge, although we do have a donations bucket! For further information please see our website www.spilsbyandhundlebywalkersarewelcome.com, or contact stef.round@gmail.com.



New Life Centre

Church | Community | Family

Here for You in 2025

At New Life Community Church, Spilsby, everything we do is driven by one thing: the love of Jesus Christ, alive and active in our community. It is this love that inspires us to serve Spilsby and the surrounding villages in so many different ways.

So, what happens at New Life? Every Sunday at 10:30am we gather for Worship – and you're warmly invited! Join us in the Chapel, or if you prefer, in the Café where the service is streamed live on the big screen. Alongside this, we host Prayer & Bible Study groups through the week to help us grow together in faith.

But our reach doesn't stop there. We're also known for being at the heart of mental health support across Lincolnshire. Partly funded by the NHS, we run the **Wellbeing Hub and Night Light Café** right here in Spilsby and Skegness, offering grassroots, localised support. In 2024 alone, we welcomed over 8,000 visits to our services!

We are also proud to lead **Bro Pro UK and Eve UK** – safe, supportive spaces for men and women to meet, socialise, and talk. Did you know there are now 16 Bro Pro locations across the county?

Alongside this work, we continue to host the **Spilsby & District Food Bank** (open via self-referral or professional referral), and our **Youth Club** for school years 7–11 is thriving, recently receiving funding support from Tesco Skegness. The Youth Club meets every Monday evening, 6:30–8:30pm, and is a brilliant place for young people to connect and have fun.

Our **Community Connectors** are also working countywide, helping people find the right support at the right time. If you've not yet come across **HAY Lincolnshire**, it's well worth a look – simply search on Facebook or Google.

There's so much more happening at New Life, but the best way to find out is to pop in and see us. If the door's open – come on in!

David Bruce

Lead Community Connector

New Life Community Church Spilsby

david.bruce23@nhs.net

WhatsApp: 07939 092585

Find us on 



Visit New Life Centre,
Spilsby on Facebook



New Life Community Church Spilsby

Sunday Gathering – 10:30am

Tuesday Morning Prayer Meeting – 10:30am

Wednesday Bible Study – 7 pm

Please pop in if you'd like someone to pray with you or give us a call on **01790 754092** for more information about the New Life Community Church.

**"Believe on the Lord Jesus and you will be saved,
you and your household – Acts 16:31"**



Church | Family | Community

New Life Community Church,
New Life Centre, Church St, Spilsby, UK



Because our journey has to start somewhere

Eve is dedicated to promoting and creating a **safe place for women to meet, socialise and talk whilst receiving support online and remotely** in areas of their lives that they are struggling with.

Ready to start your journey?

Follow for updates @eveprojectuk

Charity Number:1146916 (Projects within the New Life Community Church Family)



If you are worried about someone's immediate safety/mental wellbeing please call 999 and ask for an ambulance.

BRO PRO UK

A safe place for men to meet, socialise & talk. 'KNOW YOUR WORTH'



Call or WhatsApp: **07939 092585**



Find us on socials: **Bro Pro UK**

How are you, Lincolnshire?

Are you looking to boost your wellbeing and mental health? Find local groups on

haylincolnshire.co.uk



VFitness

MORE THAN JUST A GYM

SPECIAL
OFFER



TRY FOR FREE
3 CONSECUTIVE
DAYS GYM OR
CLASS PASS

10% OFF
ALL PERSONAL
TRAINING PACKS

PERSONAL TRAINING
MODERN GYM
WEIGHT LOSS
FITNESS CLASSES
NUTRITION
WELLNESS
TANNING
PRE/POST NATAL COACH
MEMBERSHIPS FOR ALL 13+

01790 751200
www.vfitness.co.uk
Vale Road, Spilsby
[vfitness.stronger](https://www.facebook.com/vfitness.stronger)

JOIN NOW



Lincolnshire Veg.co.uk

DELIVERING FARM
FRESH FRUIT & **VEG2TABLE**
YOUR



ORDER NOW

NOW TAKING ORDERS FOR YOUR AREA

Alford, Skegness,
Spilsby, Horncastle,
Tattershall, Coningsby,
Boston, Kirton and all
villages in between.

OUR FRUIT, VEG AND SALAD BOXES ARE PACKED WITH AMAZING FARM FRESH, LOCAL AND SEASONAL PRODUCE, ENSURING YOU THE VERY BEST FLAVOURS AND DELIGHTS DELIVERED STRAIGHT FROM OUR FARMERS TO YOUR TABLE.

FREE DELIVERY





FRANKLIN HALL - SPILSBY

A COMMUNITY HALL (REGISTERED CHARITY), THE PERFECT PLACE TO HOST SOCIAL AND BUSINESS EVENTS IN THE HEART OF SPILSBY

MAIN HALL

FOR LARGER FUNCTIONS AND ACTIVITIES UP TO 300 PEOPLE.
IDEAL FOR COMMUNITY, CHARITY AND COMMERCIAL EVENTS, CLUBS, CLASSES,
SPORTS, WEDDING RECEPTIONS AND PARTIES ETC LARGER MEETINGS,
PULL DOWN SCREEN, STAGE AND MICROPHONES AVAILABLE

CONFERENCE ROOM

OFFERS A MEETING ROOM/SMALLER FUNCTION ROOM FOR UP TO 50 PEOPLE.
PULL DOWN SCREEN AND FREE WIFI OFFERING A FRIENDLY AND
PROFESSIONAL ENVIRONMENT.

KITCHEN/BAR AND LOUNGE

IDEAL SOCIABLE SPACE TO LINK TO THE ABOVE ROOMS AND ALSO IDEAL FOR
SMALLER DINING EVENTS (E.G. COFFEE MORNINGS, LUNCH GROUPS).

Hall Manager's Office generally open Mondays, Tuesdays and Thursdays 9am to 1pm.

Tel 01790 752913

Email: spilsbyfranklinhall@outlook.com

Photos and online events diary are available by visiting: spilsby.info/franklinhall